



Shop 2/11 Mashman Avenue Kingsgrove NSW

2 🚗

Ideally situated in the heart of Kingsgrove and close to Kingsgrove Railway Station, this shop is suited for medical use and practices, a dentist, office, retail, or consultant offices, providing occupants with great exposure in the heart of the Kingsgrove CBD.

Price : \$55,000 pa
Building Size : 116 sqm
View : <https://www.srmetro.com.au/lease/nsw/st-george/kingsgrove/commercial/healthcare/8084756>

Features include:

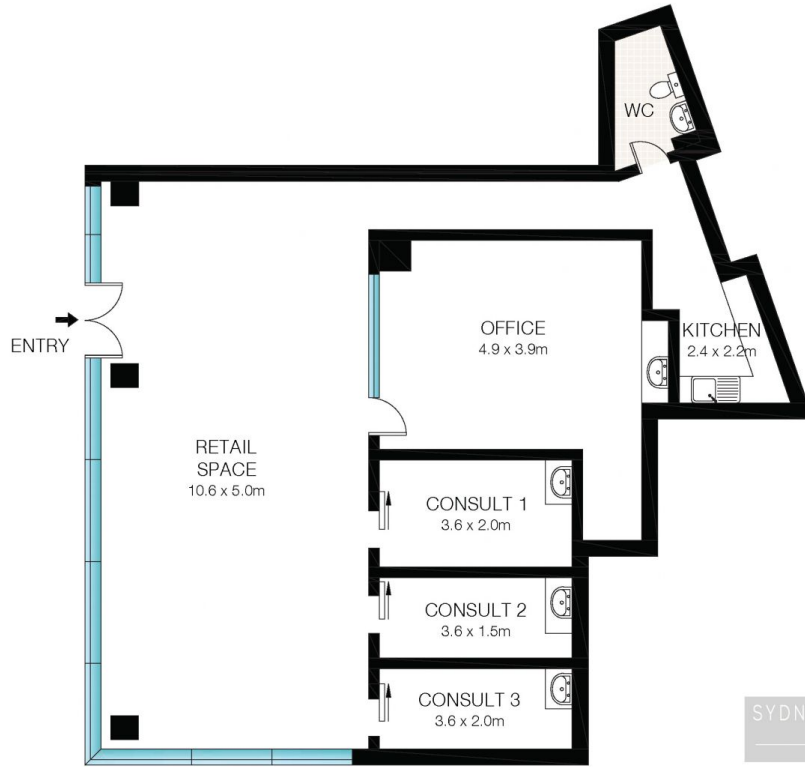
- Air conditioning throughout
- After-hours access
- High-traffic area
- Modern bathroom and kitchenette facilities
- Internal area: approx. 113 sqm, plus 2 secure basement parking spaces
- Next to Pharmacy and Woolworths

To enquire and arrange a private viewing, please contact



Farrah Cartwright
0420 311 618

<https://www.srmetro.com.au>



SYDNEY RESIDENTIAL
METRO



INT: 113m² 

This Floor Plan was prepared by WWW.CRYINGOUTLOUD.COM.AU for illustration purposes only. This document does not constitute any part of an offer or contract. Dimensions are approximate only. Copyright © 2024 Crying Out Loud. All Rights Reserved.

2/11 Mashman Avenue, Kingsgrove