



Level 32/197-199 Castlereagh Street Sydney NSW

1 1 1

Executive inner-city living is at its very best when boasting world-class panoramic views that stretch over Hyde Park, St Mary's Cathedral and out to the harbour. This well-scaled one-bedroom corner apartment is smartly appointed throughout and is located high on the 32nd floor of the acclaimed Victoria Tower in the heart of the CBD. All the right ingredients for owner-occupier or rental success are here and ready to enjoy with a premium address that has all of Sydney's major attractions, including Pitt Street Mall, the luxury goods retail quarter of Castlereagh Street and Town Hall station within footsteps from the front door.

An easy-to-maintain layout with generous living and dining areas

Large picture windows maximise natural light and great outlooks

Private balcony enjoying showstopping north-east Sydney

Price : \$1,250,000

Land Size : 77 sqm

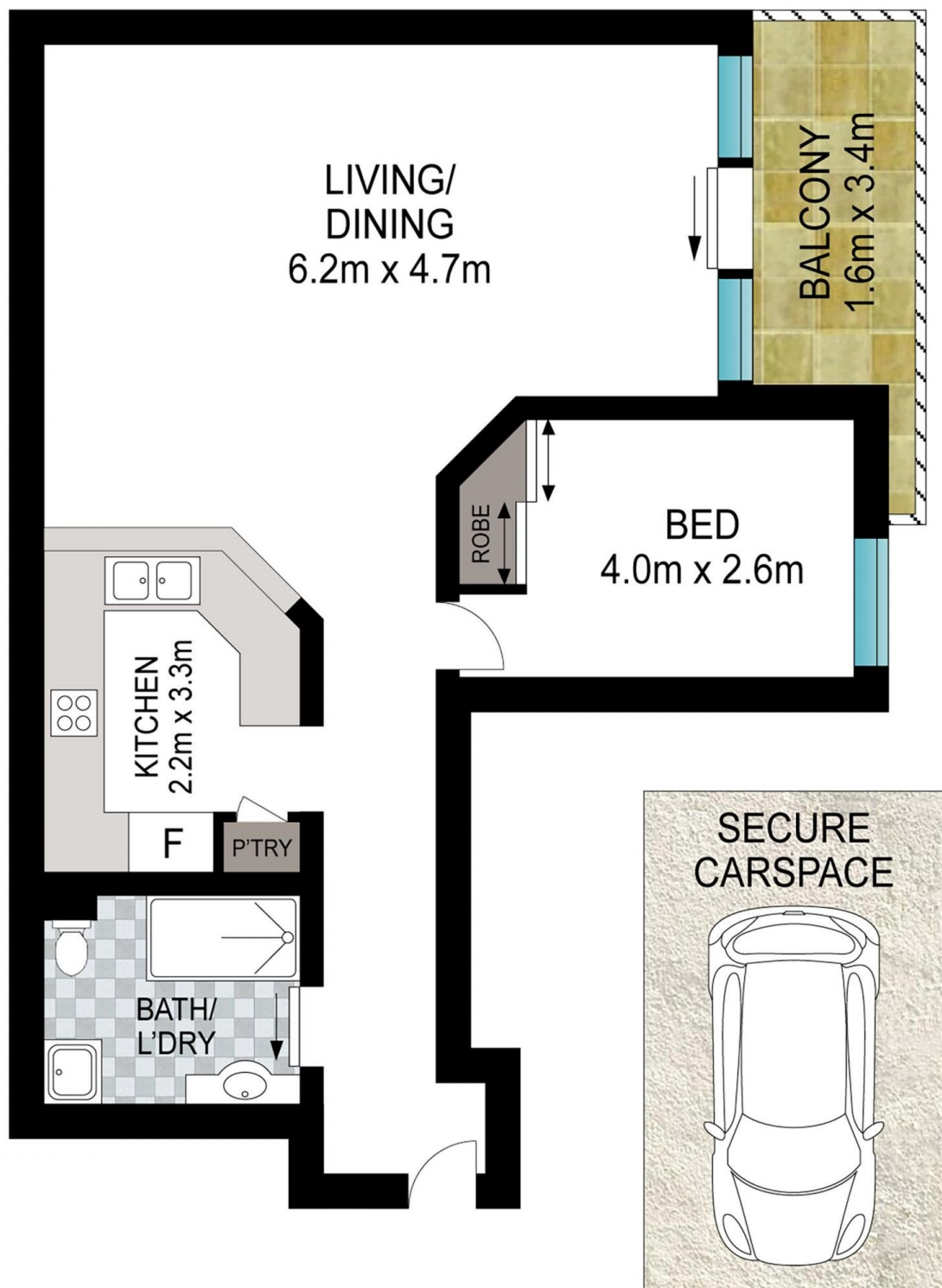
View : <https://www.srmetro.com.au/sale/nsw/sydney-city/sydney/residential/apartment/7987928>



Paul Ding
02 9283 2832



Wilson Diec
02 9283 2832



Scale in metres. Indicative only. Dimensions are approximate. All information contained herein is gathered from sources we believe to be reliable. However we cannot guarantee its accuracy and interested persons should rely on their own enquiries.

3201/197 - 199 Castlereagh Street, Sydney