

1708/343 Pitt Street Sydney NSW

2 2 1

Positioned for lifestyle and smartly designed for today's living, this well-appointed apartment in the acclaimed Century Tower will entice buyers with its generous two-bedroom layout and great convenience to all of the city's amenities. It combines practicality with style and features an easy maintenance layout that includes a bright interior, elevated cityscape outlooks plus an all-important security car space. It's also ideally located right in the heart of the CBD with Hyde Park, train stations, world-class dining, shopping and entertainment options just a few steps from the front door.

Price : \$1,290,000

View : <https://www.srmetro.com.au/sale/nsw/sydney-city/sydney/residential/apartment/7931355>

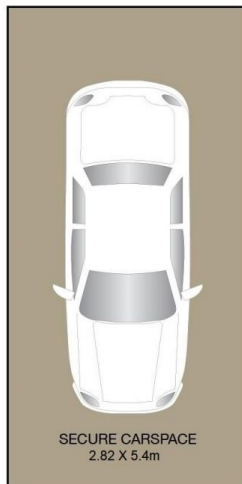
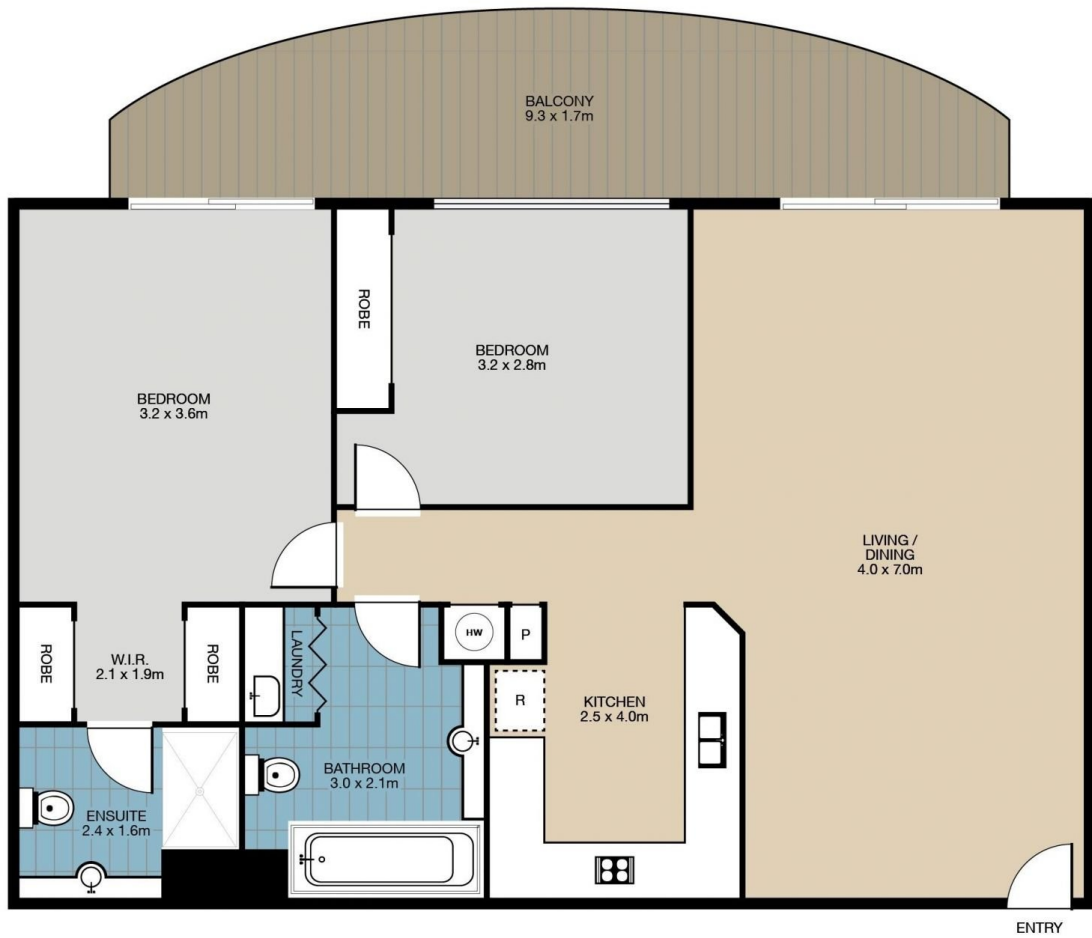
- * A well-managed security complex with a grand foyer and concierge
- * Generous and bright open design with good natural light throughout
- * Recently refreshed with new paint and sleek hybrid timber



Wilson Diec
02 9283 2832



Bernard Tsang
02 9283 2832



1708/343 Pitt Street, SYDNEY

Total Area : 89m² (incl. balcony)

Parking : 15m²

This floor plan is intended as a guide only. Layout dimensions are approximate only. No representations or warranties of any nature whatsoever are given or intended. Any person using this information should rely on their own enquiries.