



20408/2B Figtree Drive Sydney Olympic Park NSW

2 2 1

Located in the highly sought after Pavilions residences by Mirvac, this contemporary 2 bedroom apartment offers a generous living layout to suit all types of life and a private outdoor area that's perfect for day and night entertaining.

- Open design living and dining extends to North facing balcony
- Timber flooring throughout; pet-friendly building
- Premium kitchen with stone benchtop and gas appliances
- 2 double bedrooms with built-ins & master with balcony access
- Deluxe bathroom and master ensuite
- Ducted air conditioning, video intercom & lift access
- Security carspace plus additional lock up storage cage
- Full facilities which include a well equipped gym, community room, BBQ and landscaped gardens; IGA at door

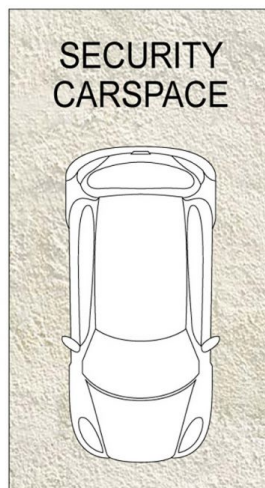
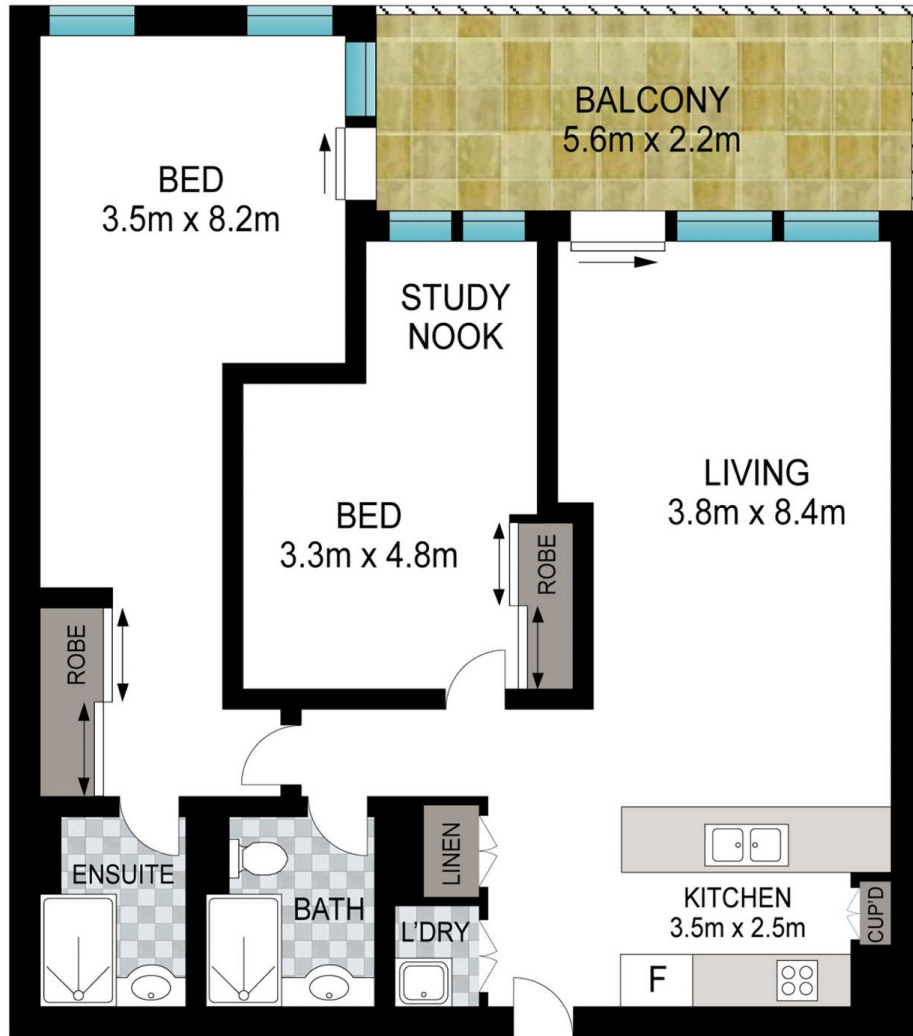
Building Size : 90 sqm
View : <https://www.srmetro.com.au/sale/nsw/inner-west/sydney-olympic-park/residential/apartment/7906975>



Bernard Tsang
02 9283 2832



Wilson Diec
02 9283 2832



Scale in metres. Indicative only. Dimensions are approximate. All information contained herein is gathered from sources we believe to be reliable. However we cannot guarantee its accuracy and interested persons should rely on their own enquiries.



20408/2B Figtree Drive, Sydney Olympic Park