



### Level 38/343 Pitt Street Sydney NSW

1 1 1

Merged high on level 38 in a desirable north facing position, this 66sqm one bedroom apartment offers homeowner a life style of exceptional convenience in the very vibrant heart of the city's famed entertainment district, with moments to George street cinema, Town Hall station, Pitt Street mall & Hyde Park. The Century Tower is a reputable established residence surrounded by an array of cafes, restaurants, shopping and all the great amenities City has to offer.

Large open plan layout featuring combined living and dining  
Granite kitchen equipped with quality stainless appliances  
North facing bedroom with built-in wardrobe and direct balcony access  
Fully renovated bathroom appointed with bathtub, shower and laundry

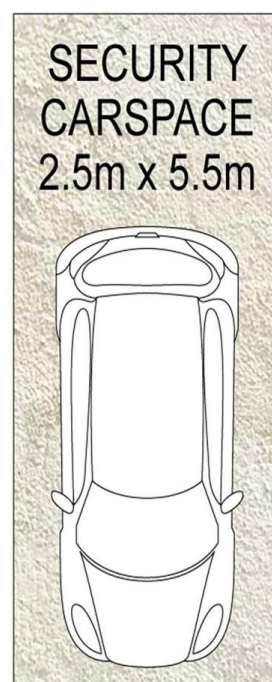
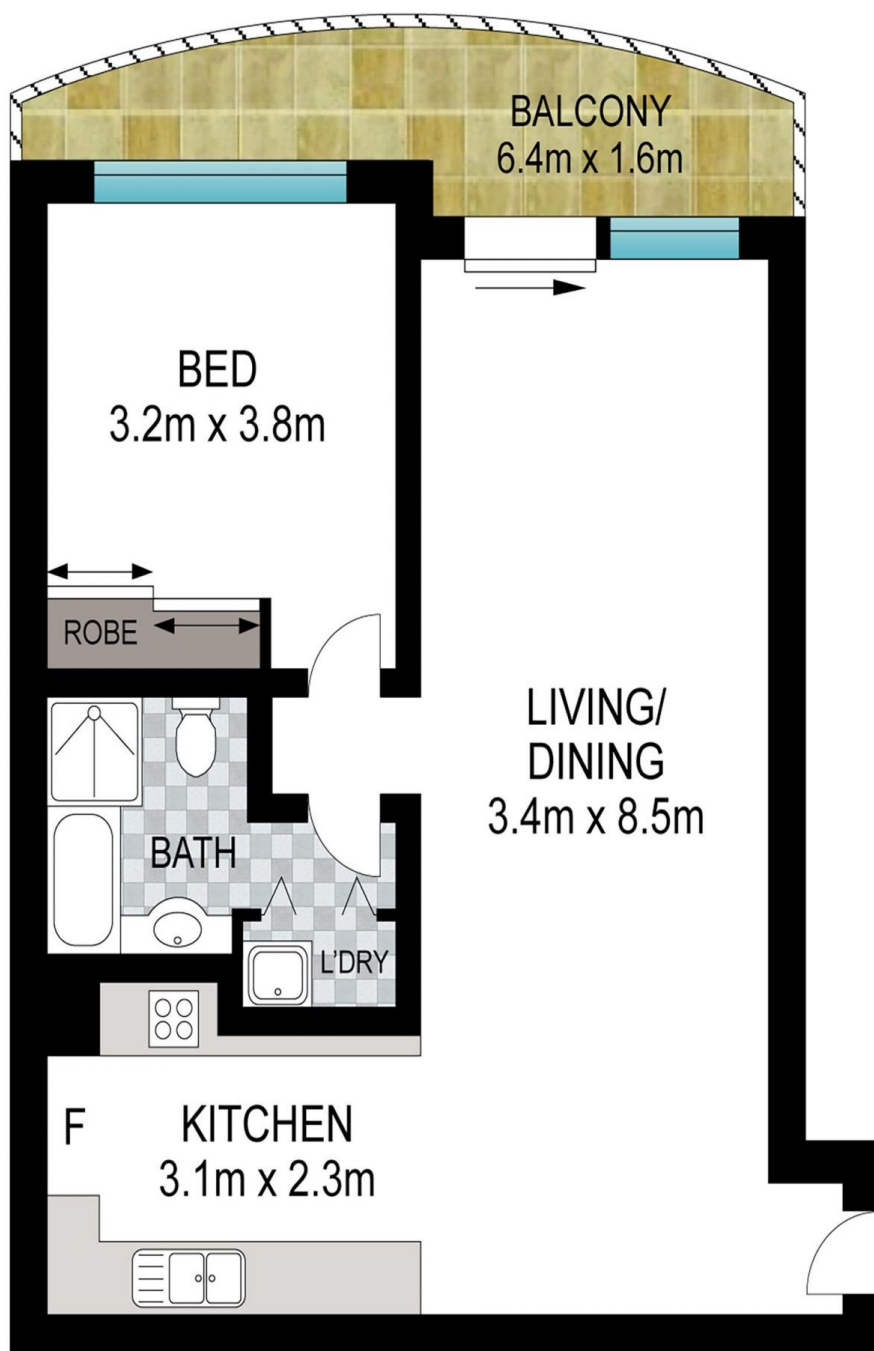
**View :** <https://www.srmetro.com.au/sale/nsw/sydney-city/sydney/residential/apartment/7900482>



**Paul Ding**  
02 9283 2832



**Wilson Diec**  
02 9283 2832



Scale in metres. Indicative only. Dimensions are approximate. All information contained herein is gathered from sources we believe to be reliable. However we cannot guarantee its accuracy and interested persons should rely on their own enquiries.

3801/343 Pitt Street, Sydney