



402/2 Scotsman Street Glebe NSW

2 2 1

DEPOSIT TAKEN

Enjoying the coveted contemporary streamlined design, this recently completed luxury apartment complemented by sleek and stylish finishes with bright open interiors; it offers a great opportunity to secure a life style purchase within the Mirvac built Harold Park, with footsteps to harbourside walk, peaceful park lane, organic shops and light rail to Sydney City.

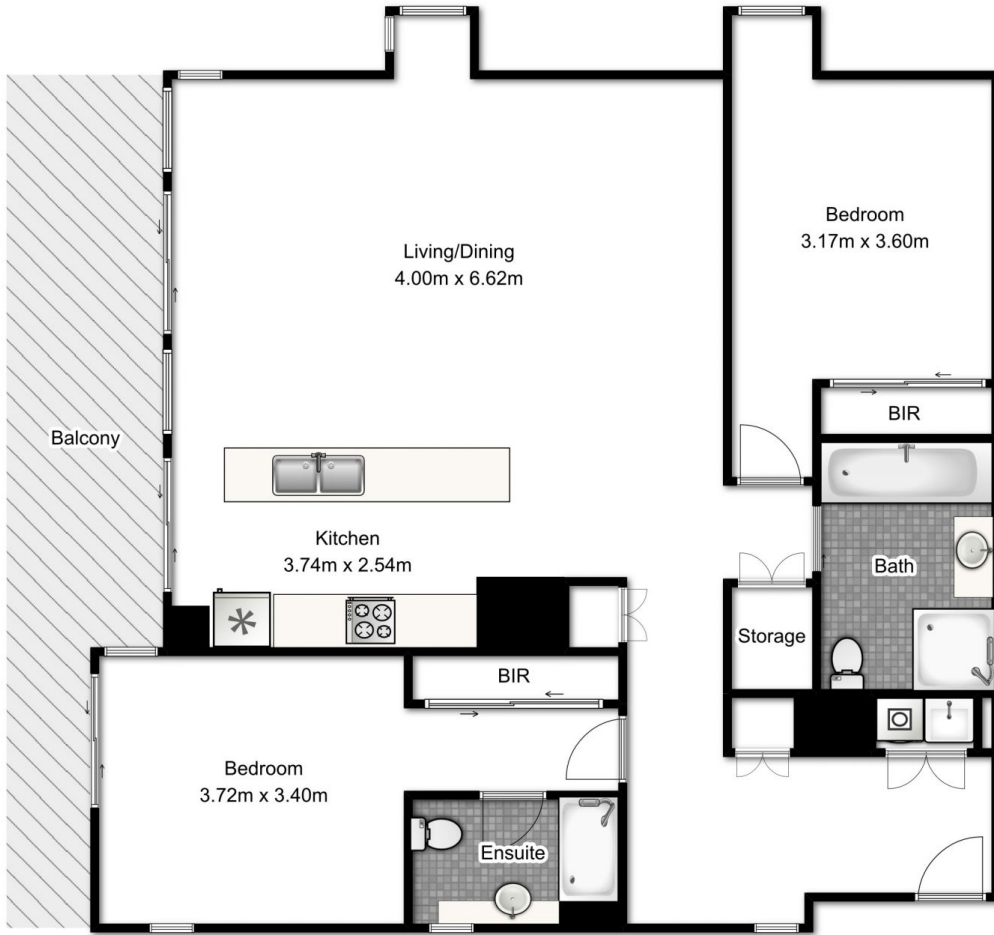
- Enormous 120sqm of living space
- Desirable corner position with only one common wall
- Inviting lounge/dining flowing to sunny full length balcony
- Abundance of natural light creating a bright and fresh ambience
- Distinctive layout with separated bedroom and study nook
- Integrated Miele gas appliances and stone island bench

View : <https://www.srmetro.com.au/lease/nsw/inner-west/glebe/residential/apartment/7864024>

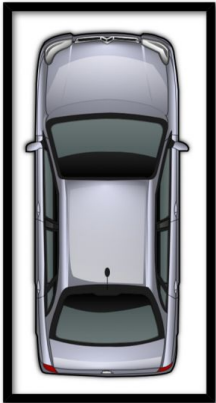


Jason Li
02 9283 2832

<https://www.srmetro.com.au>



APARTMENT
APPROX. FLOOR
AREA 120.0 SQ.M.



SECURE CAR SPACE & STORAGE
APPROX. FLOOR
AREA 17.0 SQ.M.

TOTAL APPROX. FLOOR AREA 137.0 SQ.M.
Measurements are approximate. Not to Scale. For Illustrative purposes only.