

Level 1/385 Anzac Parade Kingsford NSW

Located on the busy Anzac Pde, this Level One Space used to be traded as City Rose and, for the first time for lease since the 1990s offers immediate business opportunities for astute operators looking to set their mark in this bustling suburb.

Features include

- Three rooms with ensuite bathrooms plus two rooms shared with a shower
- Spacious waiting room with reception/office at the back
- Private toilets and kitchenette provide flexibility and convenience for your business needs
- Internal laundry with a storage room on the ground floor
- Approx 132 sqm in area size
- Rear Lane Access: Simplify deliveries and day-to-day operations through the convenience of rear lane access

Building Size : 132 sqm
View : <https://www.srmetro.com.au/lease/nsw/eastern-suburbs/kingsford/commercial/other/7803392>

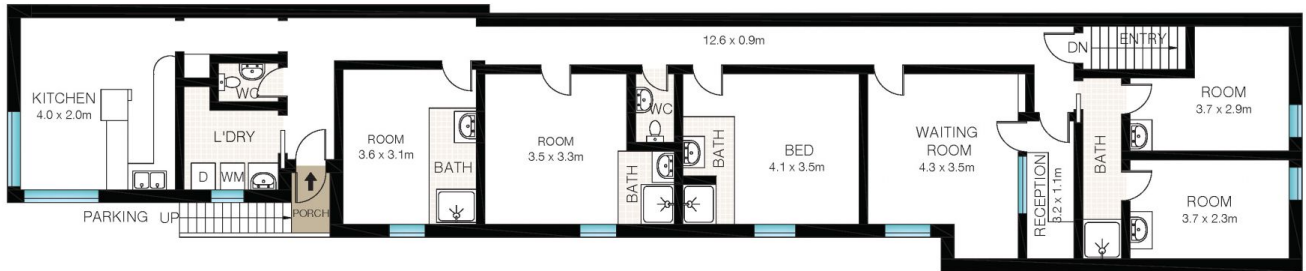


Stephen Shen
02 9283 2832



GROUND LEVEL

SYDNEY RESIDENTIAL
METRO



LEVEL 1



INT: 132m²
EXT: 2m²



This Floor Plan was prepared by WWW.CRYINGOUTLOUD.COM.AU for illustration purposes only. This document does not constitute any part of an offer or contract. Dimensions are approximate only. Copyright © 2023 Crying Out Loud. All Rights Reserved.

1/385 Anzac Parade, Kingsford