



1/291 Liverpool Road Ashfield NSW

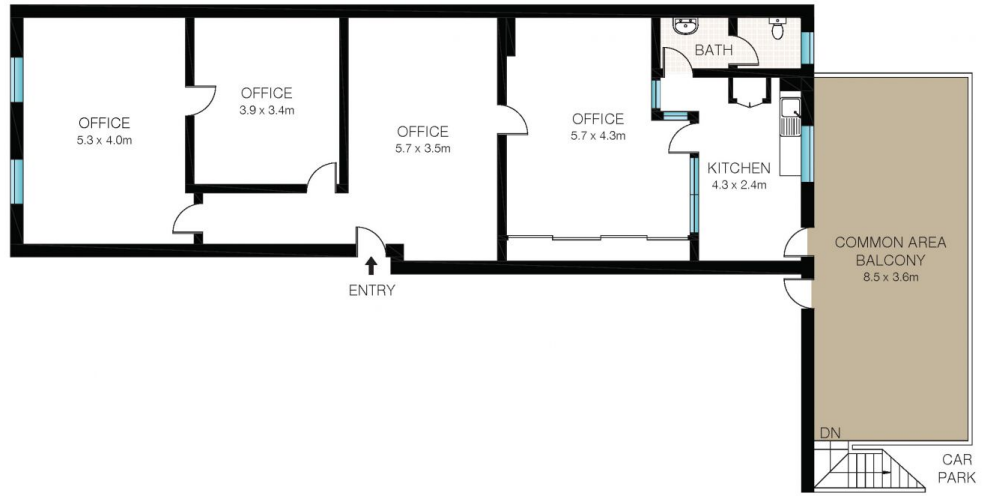
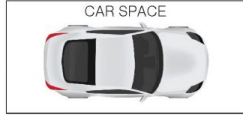
Unbeatable office space with a large internal size ideal for professional industries to occupy. Set within a convenient location, in the thriving hub of Ashfield
Features include

- Three separate offices with a large reception area
- Private toilet and kitchenette provide flexibility and convenience for your business needs
- Flexible floor plan, approx 100 sqm in area size plus share common balcony with the office next door
- Boutique building
- Rear Lane Access: Simplify deliveries and day-to-day operations through the convenience of rear lane access

Price : \$40,000 + GST pa
Building Size : 100 sqm
View : <https://www.srmetro.com.au/lease/nsw/inner-west/ashfield/commercial/offices/7803307>



Stephen Shen
02 9283 2832



GROUND LEVEL

LEVEL 1



INT: 100m²
EXT: 31m²



This Floor Plan was prepared by WWW.CRYINGOUTLOUD.COM.AU for illustration purposes only. This document does not constitute any part of an offer or contract. Dimensions are approximate only. Copyright ©2023 Crying Out Loud. All Rights Reserved.

1/291 Liverpool Road, Ashfield