



83/267 Castlereagh Street Sydney NSW

3 2 1

In the ultimate lifestyle location and immersed in the vibrant cityscape views over Hyde Park and Sydney Harbour, this sophisticated apartment is ideally situated on the doorstep of Sydney's business, dining and entertainment venues. Stylish in its design and generous in its layout, it offers a peaceful inner-city retreat with fresh interiors, great air crossflow and a user-friendly floorplan, and has access to an array of world-class resort amenities. This exceptional CBD location is within a stroll to all the attractions that make Sydney so popular with restaurants, cinemas, Hyde Park, Chinatown and a choice of train stations all within a stroll from the front door.

An elevated easterly aspect and energetic cityscape surrounds
Flowing light-filled interiors feature a spacious open plan design

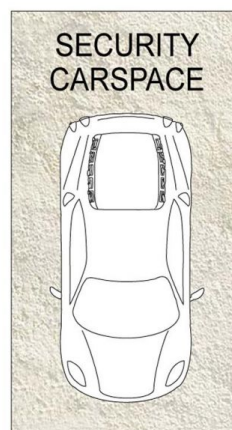
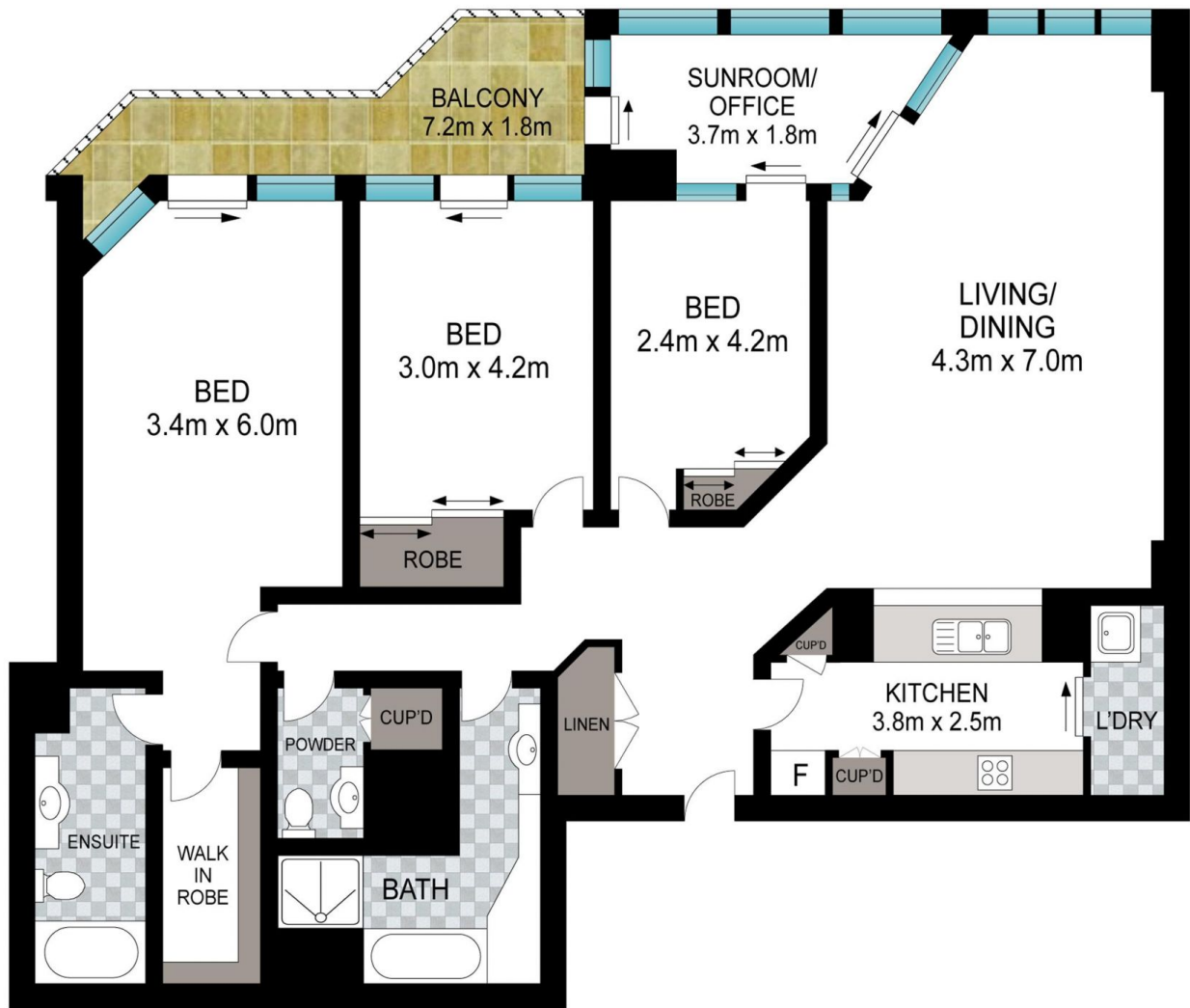
View : <https://www.srmetro.com.au/sale/nsw/sydney-city/sydney/residential/apartment/7768371>



Paul Ding
02 9283 2832



Wilson Diec
02 9283 2832



0 1 2 3 4 5

Scale in metres. Indicative only. Dimensions are approximate. All information contained herein is gathered from sources we believe to be reliable. However we cannot guarantee its accuracy and interested persons should rely on their own enquiries.

83/267 Castlereagh Street, Sydney