



901/438 Victoria Avenue Chatswood NSW

2 2 1

Enviably positioned on the 9th level of this landmark residential development 'Metro Grand', this bright and airy corner apartment is located right above the Chatswood Transport Interchange, moments from Westfield shopping and Woolworths at door.

- Light-filled living and dining open to North facing balcony
- Gas kitchen with stone benchtop and 'Miele' appliances
- Two double bedrooms, master ensuite
- Ducted air conditioning, video intercom and lift access
- Security carspace
- 25m indoor heated pool and spa, well-equipped gym & landscaped garden

Strata levies: \$1,785.35pq
Council rates: \$ 355.00pq
Water rates: \$ 181.07pq

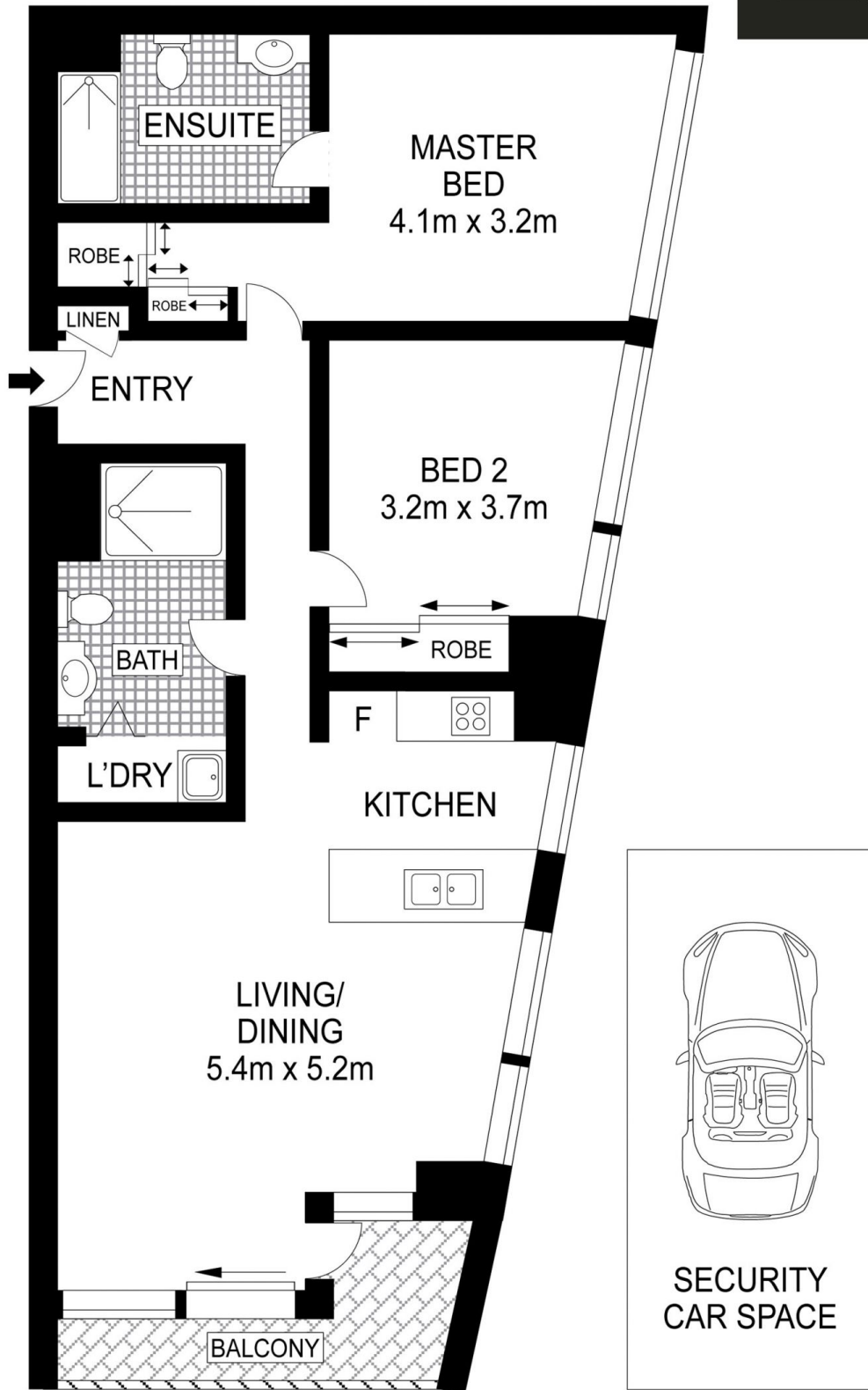
Building Size : 79 sqm
View : <https://www.srmetro.com.au/sale/nsw/north-shore-lower/chatswood/residential/apartment/7743957>



Bernard Tsang
02 9283 2832



Wilson Diec
02 9283 2832



Apartment approx total area: 79m²
EXT: 16 m²



Scale in metres. Indicative only. Dimensions are approximate. All information contained herein is gathered from sources we believe to be reliable. However we cannot guarantee its accuracy and interested persons should rely on their own enquiries.

901/438 Victoria Avenue, Chatswood