



## 189/398 Pitt Street Sydney NSW

2 1 1

Live a convenient and trendy inner city lifestyle in this charming and affordable 2 bedroom apartment. Positioned on the 29th floor this 89sqm apartment is enviably set within footsteps to World Square shopping, all eateries and transport.

- Invitingly spacious open plan lounge and dining flow to light filled enclosed balcony
- Oversized kitchen with plentiful cupboard storage
- 2 double bedrooms both with built-in robes
- Modern tiled bathroom, separate laundry
- Central air-conditioning, intercom access
- Full facilities which include indoor heated pool, spa, squash court, gym, & sauna
- Extra large 21sqm lock-up garage on B1 with additional room for storage

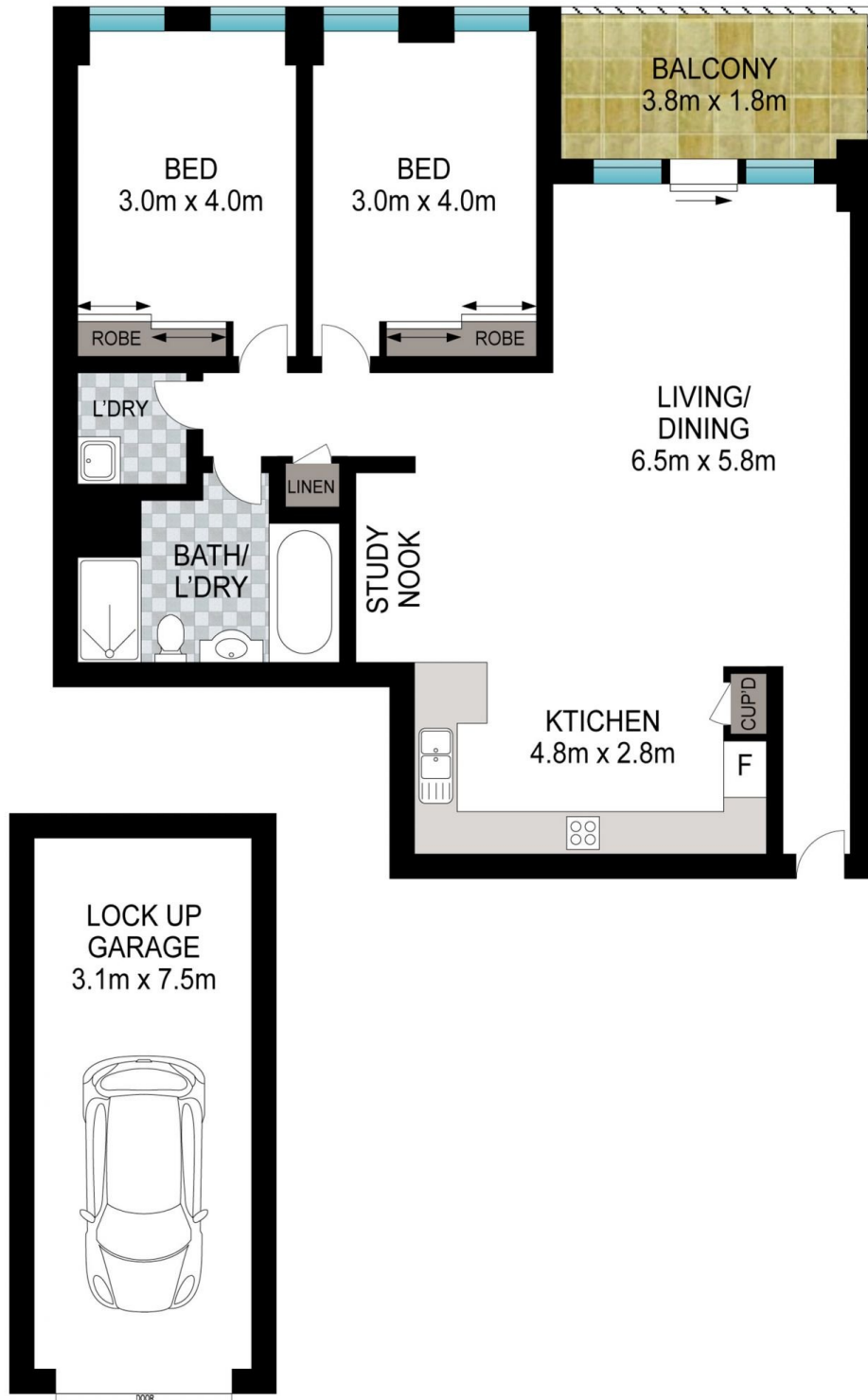
**Price** : \$ 930,000  
**Building Size** : 89 sqm  
**View** : <https://www.srmetro.com.au/sale/nsw/sydney-city/sydney/residential/apartment/7722400>



**Bernard Tsang**  
02 9283 2832



**Wilson Diec**  
02 9283 2832



Approx. apartment area: 89 sq.m.  
Approx. garage area: 21 sq.m.



0 1 2 3 4 5

Scale in metres. Indicative only. Dimensions are approximate. All information contained herein is gathered from sources we believe to be reliable. However we cannot guarantee its accuracy and interested persons should rely on their own enquiries.

189/398 Pitt Street, Sydney