



2208/2 Quay Street Haymarket NSW

2 2 1

This inviting 100 sqm 2 bedroom apartment on level 22 offers open plan interiors with panoramic views across the Blackwattle Bay and extending as far afield as the Blue Mountains. Enjoy the ultimate city lifestyle in an ultra-convenient location with direct access to Market City shopping centre and Paddy's, whereas Sydney Uni and UTS are only a short stroll away.

- Bright and airy living and dining open to balcony
- Light filled updated interiors with new paints and light fittings
- Gourmet kitchen with gas appliances and ample storage
- 2 double bedrooms, master ensuite & built-ins;
- Internal laundry; audio-visual intercom
- Security carspace; 24/7 concierge service- Exclusive use of landscaped entertaining grounds, tennis courts, BBQ area, heated pool and gymnasium

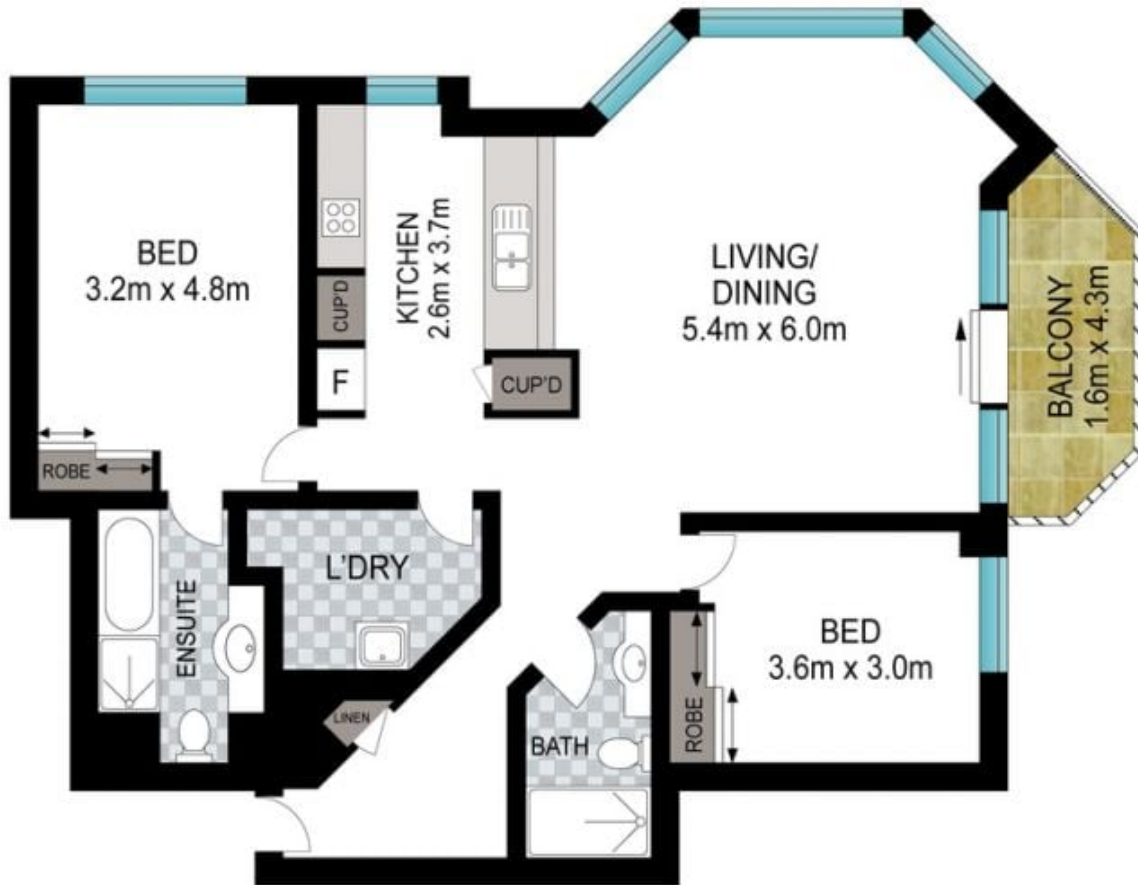
Price : \$ 1,338,000
Building Size : 100 sqm
View : <https://www.srmetro.com.au/sale/nsw/sydney-city/haymarket/residential/apartment/7706544>



Bernard Tsang
02 9283 2832



Wilson Diec
02 9283 2832



Scale in metres. Indicative only. Dimensions are approximate. All information contained herein is gathered from sources we believe to be reliable. However we cannot guarantee its accuracy and interested persons should rely on their own enquiries.

2208/2 Quay Street, Haymarket