



907/133 Goulburn Street Surry Hills NSW

2 2 1

Quietly set on the top floor of the Mark Foy's warehouse conversion, this unique modern apartment presents high quality finishes throughout, showcasing the best in urban living on the fringe of the CBD.

- Open design living and dining extends to balcony
- Sleek modern kitchen with gas appliances
- Both bedrooms with built-ins & one with balcony access
- Deluxe bathroom & ensuite; internal laundry
- Intercom entry, ducted air-conditioning
- Security carspace
- Moments from Surry Hills dining precinct and walk to Museum station

Price : \$ 1,180,000

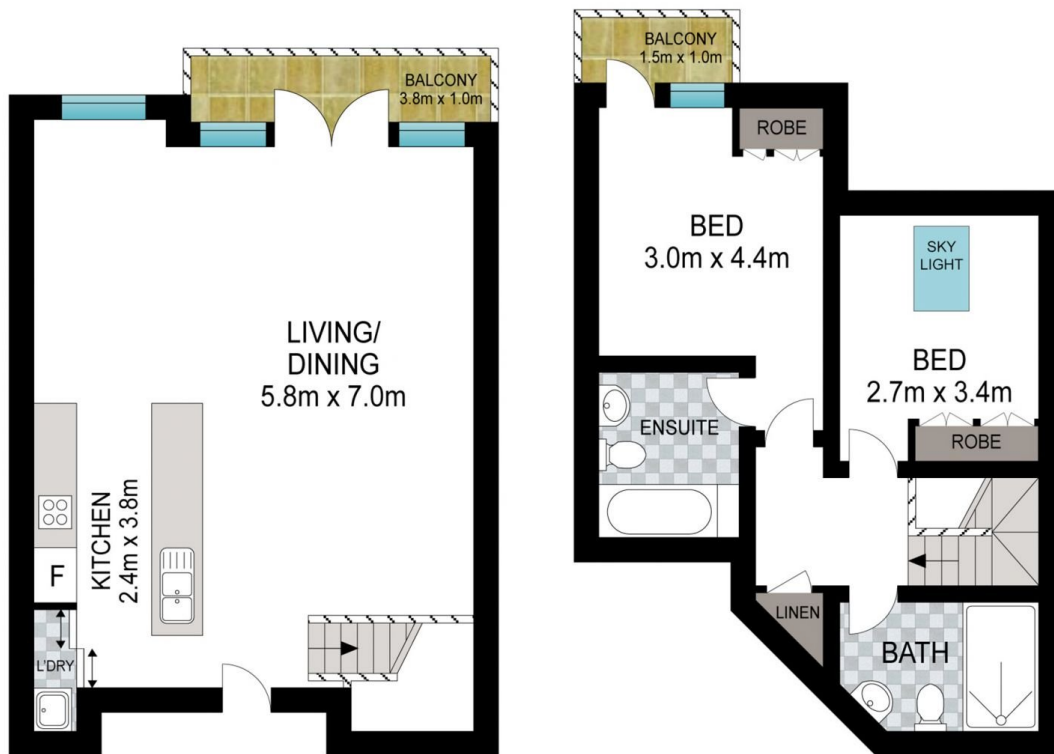
View : <https://www.srmetro.com.au/sale/nsw/eastern-suburbs/surry-hills/residential/apartment/7584240>



Bernard Tsang
02 9283 2832

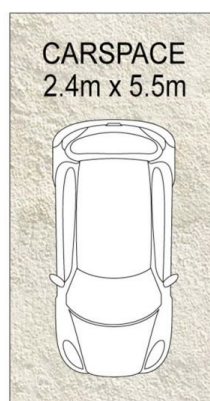


Wilson Diec
02 9283 2832



ENTRY LEVEL

UPPER LEVEL



CARSPACE
2.4m x 5.5m



Scale in metres. Indicative only. Dimensions are approximate. All information contained herein is gathered from sources we believe to be reliable. However we cannot guarantee its accuracy and interested persons should rely on their own enquiries.

Approx. apartment size: 78sq.m.
Approx. car space size: 14sq.m.
Approx. total size: 92sq.m.



907/133 Goulburn Street, Surry Hills