



Level 28/267 Castlereagh Street Sydney NSW

3 2 1

Nestled in Museum Towers at the quiet end of Sydney's famous Castlereagh Street, this beautifully presented apartment affords you a premium address with fantastic views over Hyde Park through to the harbour.

Residents can relish in some of the best views in Sydney whilst gazing over the CBD's diverse architectural landscapes juxtaposed against Hyde Park's wide open green spaces, where you can enjoy an evening stroll to unwind from the stresses of the day. On New Year's Eve, you can leave the busyness of the City to those more energetic individuals and celebrate in the comfort of your own balcony, a drink in hand, and watch the fireworks light up the harbour.

This apartment boasts generous living space (142m2 incl balcony) which flows out onto a balcony that is accessible

Land Size : 156 sqm

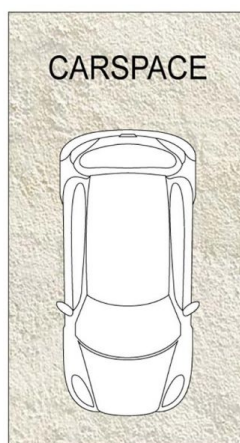
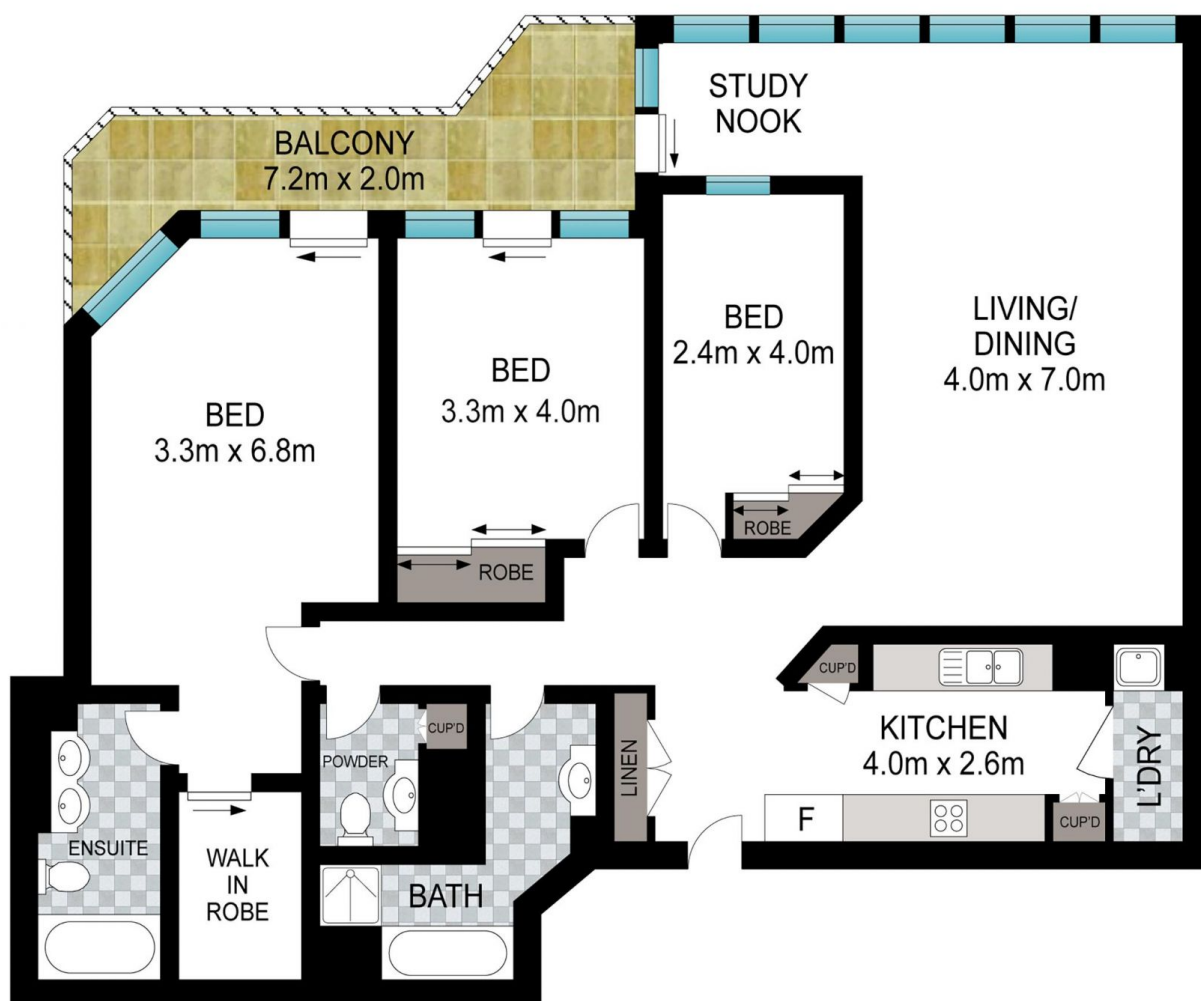
View : <https://www.srmetro.com.au/sale/nsw/sydney-city/sydney/residential/apartment/7537822>



Paul Ding
02 9283 2832



Wilson Diec
02 9283 2832



0 1 2 3 4 5

Scale in metres. Indicative only. Dimensions are approximate. All information contained herein is gathered from sources we believe to be reliable. However we cannot guarantee its accuracy and interested persons should rely on their own enquiries.



91/267 Castlereagh Street, Sydney