



266/27 Park Street Sydney NSW

2 2

Occupying a desirable corner position in the iconic Park Regis tower, this well-appointed 2 bedroom apartment offers an excellent entry point into one of Sydney's most sought after residential precincts of park side living. An astute investment opportunity, it is just moments to the financial centre, cultural attractions, great dining and entertainment.

- ? East/West cross-ventilation design loaded with natural light
- ? Stunning view over Hyde Park to St Mary's Cathedral
- ? Functional kitchen with window access and view to city west
- ? Advantage of 2 bathrooms which is rare in the building
- ? Attractive floor plan separates living and bedroom area
- ? On site manager, rooftop pool & entertaining deck

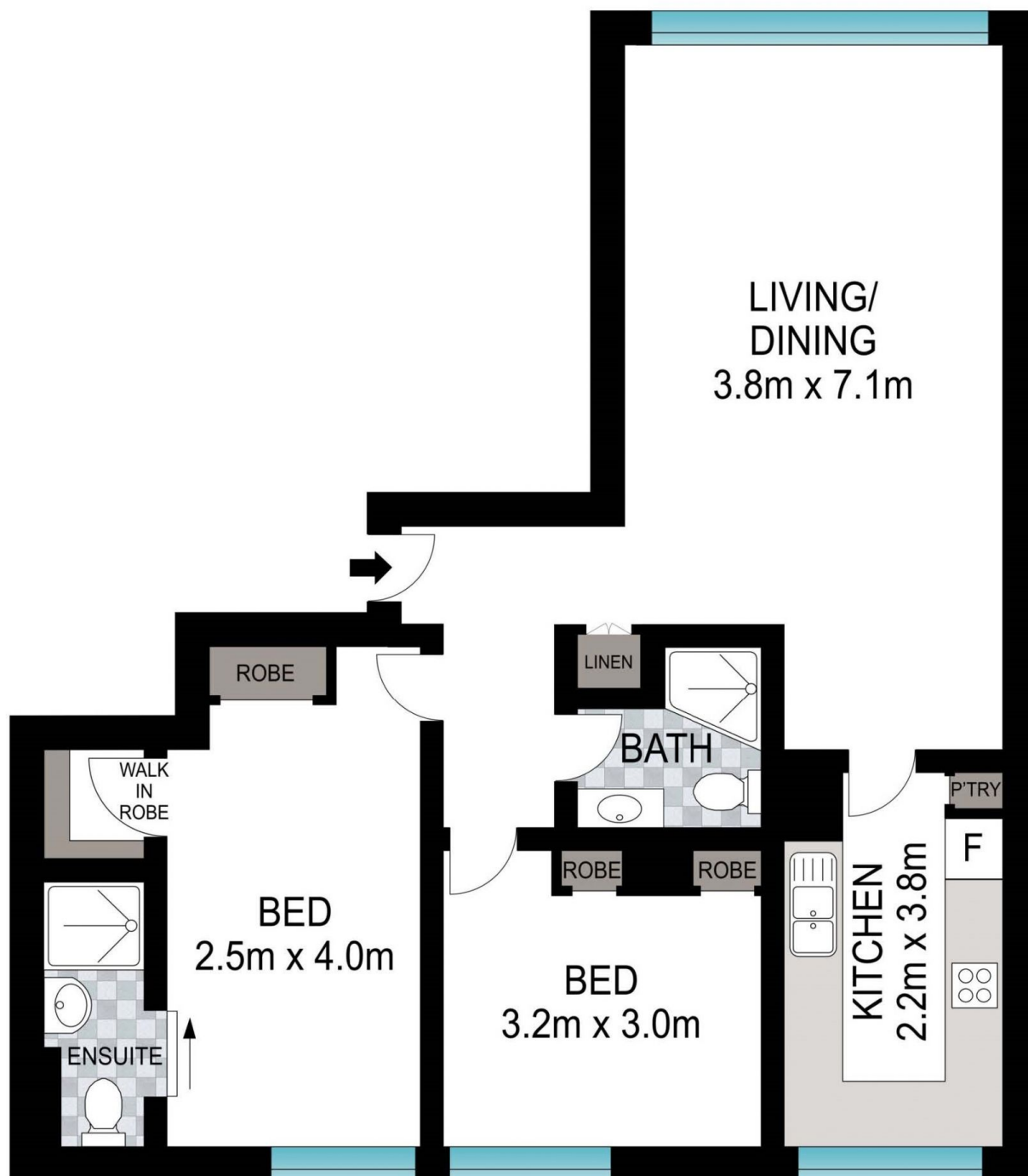
Land Size : 72 sqm
View : <https://www.srmetro.com.au/sale/nsw/sydney-city/sydney/residential/apartment/7507970>



Paul Ding
02 9283 2832



Wilson Diec
02 9283 2832



266/27 Park Street, Sydney NSW 2000



Scale in metres. Indicative only. Dimensions are approximate. All information contained herein is gathered from sources we believe to be reliable. However we cannot guarantee its accuracy and interested persons should rely on their own enquiries.

