



117/298 Sussex Street Sydney NSW

1 1 1

This unique and beautifully presented apartment is situated in the popular 'Maestri Tower', located just 160 meters away from Sydney Town Hall Square, it benefits hugely from its close approximate position to the exciting Darling Harbour Quarter neighborhood, with every conceivable amenity at its doorstep including cafes, restaurants, and retail offerings enhancing the unmatched vibrant City lifestyle.

Generous double size bedroom with built-in wardrobes
 A separated study or 2nd bedroom providing extra living space and value
 Open plan kitchen with stone benchtop & stainless steel appliances
 Sought after car space on title
 Indoor pool & gym and concierge services

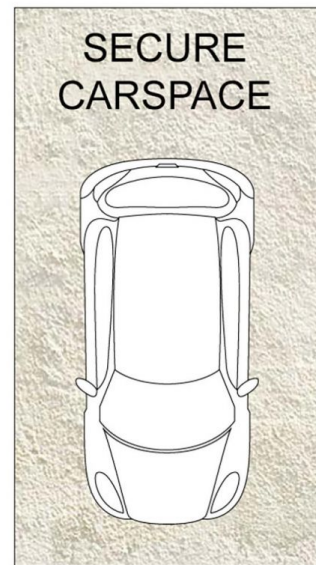
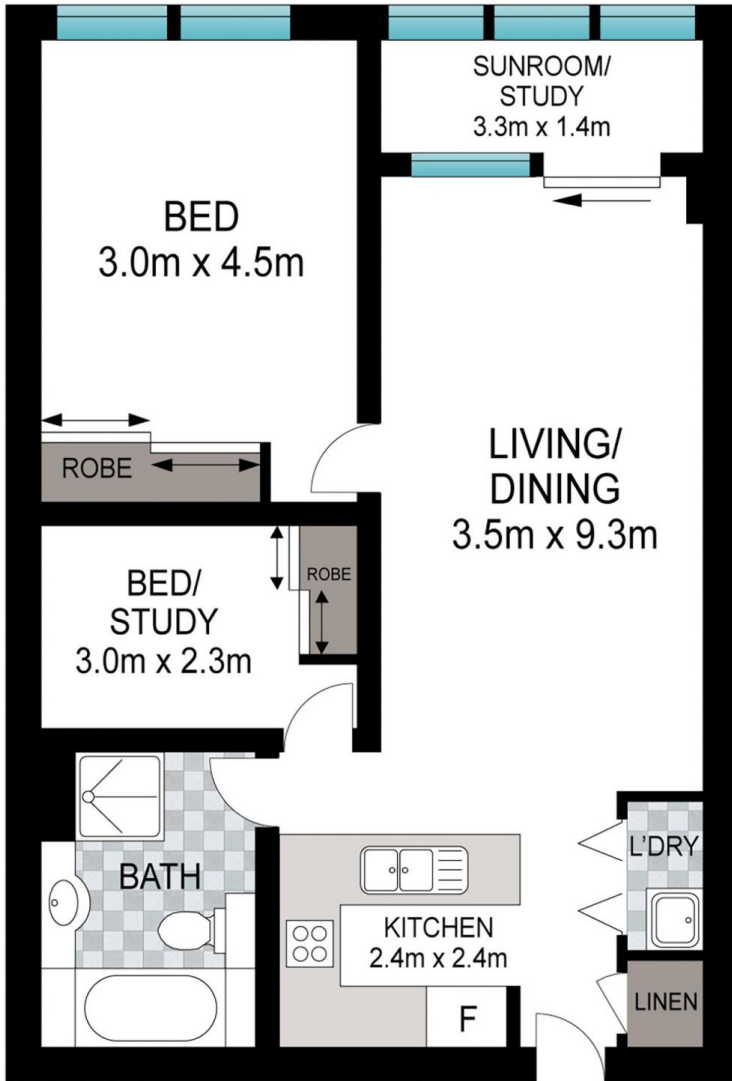
Land Size : 85 sqm
View : <https://www.srmetro.com.au/sale/nsw/sydney-city/sydney/residential/apartment/7489227>



Paul Ding
 02 9283 2832



Wilson Diec
 02 9283 2832



Scale in metres. Indicative only. Dimensions are approximate. All information contained herein is gathered from sources we believe to be reliable. However we cannot guarantee its accuracy and interested persons should rely on their own enquiries.

117/298 Sussex Street, Sydney