



### 13/515 Kent Street Sydney NSW

2 2 2

Positioned in the renowned Maestri Towers in the heart of the city, this superb 2 bedroom apartment boasts light-filled interiors, contemporary finishes and a relaxed layout for stylish ease of living.

- Open plan living and dining lead to an enclosed balcony
- Gourmet gas kitchen with granite benchtop, r/c air conditioning
- Both bedrooms with built-ins & balcony access
- Master ensuite with bathtub, internal laundry off kitchen
- On site building management, gym, sauna & indoor heated pool
- Double security parking
- Steps from Town Hall and a short walk to Darling Harbour

Strata levies: \$1,769.30pq  
Council rates: \$ 302.90pq

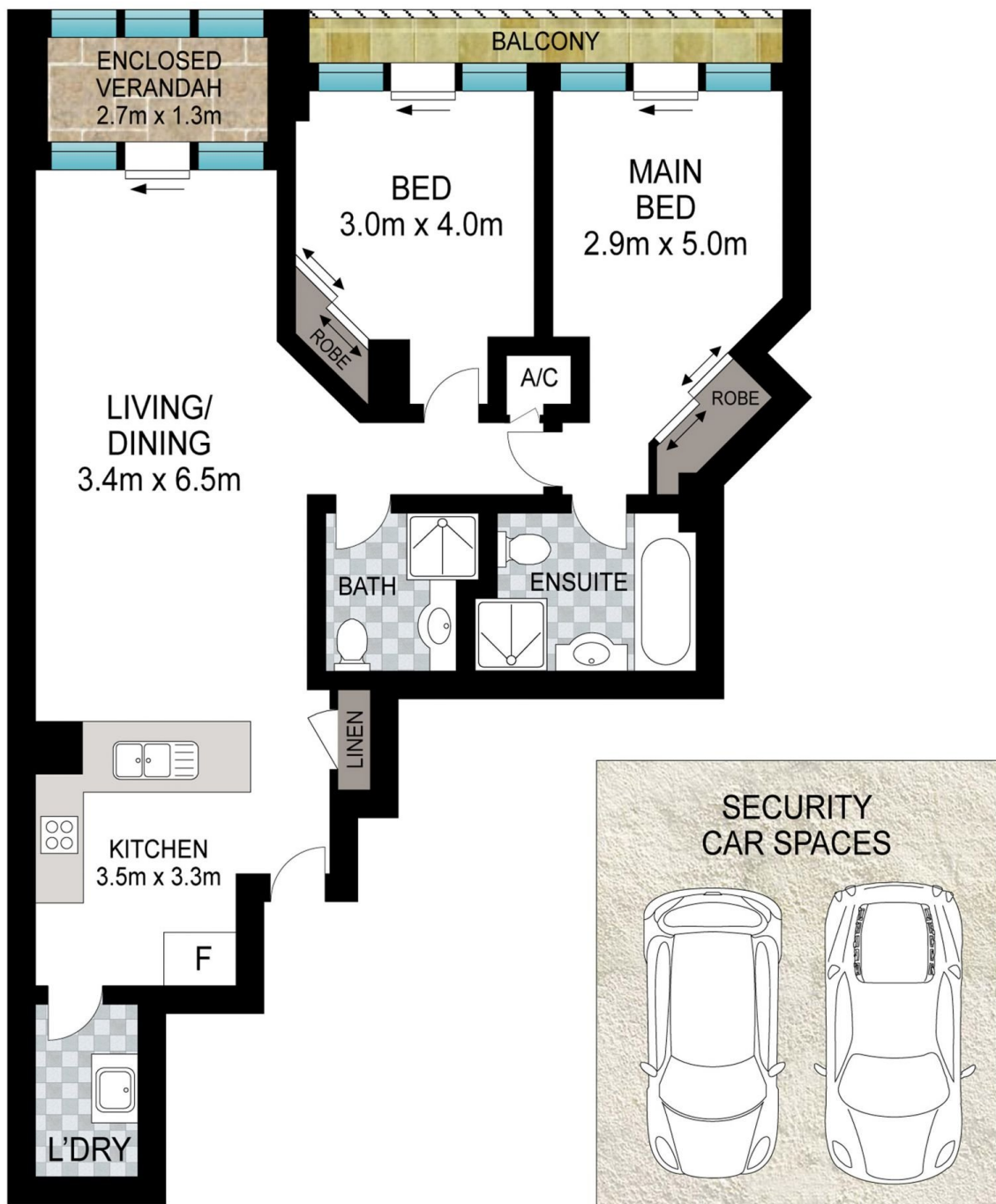
**Building Size** : 79 sqm  
**View** : <https://www.srmetro.com.au/sale/nsw/sydney-city/sydney/residential/apartment/7238489>



**Bernard Tsang**  
02 9283 2832



**Wilson Diec**  
02 9283 2832



Approx. apartment size: 79sq.m.  
Approx. car space size: 28sq.m.



Scale in metres. Indicative only. Dimensions are approximate. All information contained herein is gathered from sources we believe to be reliable. However we cannot guarantee its accuracy and interested persons should rely on their own enquiries.

13/515 Kent Street, Sydney