

**32/12 Berry Street North Sydney NSW**

2 2 1

Set in the vibrant heart of North Sydney, this generous two bedroom apartment within "Atria" presents effortless modern living. One of just 48 residences with interiors by Koichi Takada Architects, this 96sqm contemporary apartment offers a lifestyle of sophistication and convenience and enjoys a central locale amid North Sydney's vibrant CBD.

- Spacious open plan living/dining open to full width balcony
- Engineered Oak timber flooring & ducted air conditioning
- Gourmet CaesarStone gas kitchen equipped with quality appliances
- Master bedroom includes built-in wardrobe and ensuite
- Stylish modern bathrooms featuring floor-to-ceiling tiles
- Video intercom entry and lift access to basement parking
- Stroll to the train station and soon to be completed North

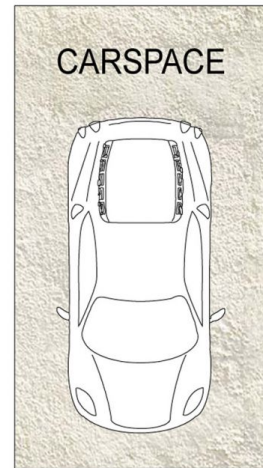
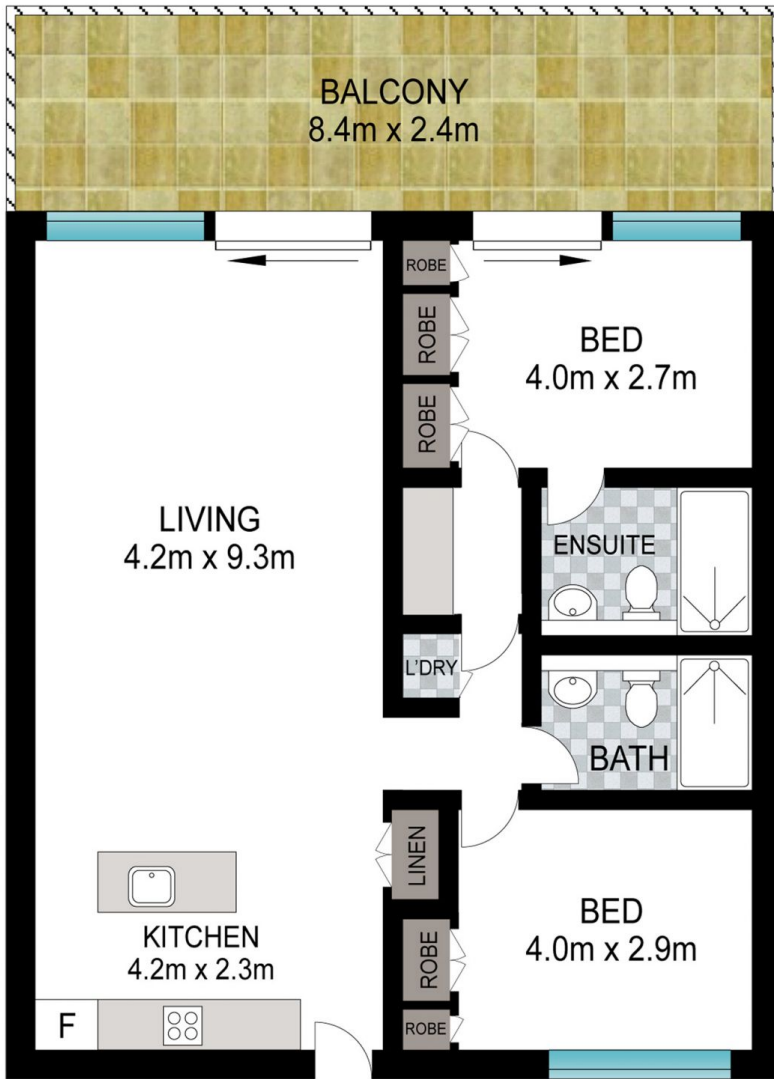
**Price** : \$ 1,095,000  
**Building Size** : 96 sqm  
**View** : <https://www.srmetro.com.au/sale/nsw/north-shore-lower/north-sydney/residential/apartment/7221629>



**Bernard Tsang**  
02 9283 2832



**Wilson Diec**  
02 9283 2832



Scale in metres. Indicative only. Dimensions are approximate. All information contained herein is gathered from sources we believe to be reliable. However we cannot guarantee its accuracy and interested persons should rely on their own enquiries.

Approx. apartment size: 96 m<sup>2</sup>  
 Approx. carspace size: 14 m<sup>2</sup>



32/12 Berry Street, North Sydney