



Level 29/197-199 Castlereagh Street Sydney NSW

2 🏠 2 🚗 2 🚗

Poised for spectacular panoramas from the 29th floor of the acclaimed Victoria Tower building, this well-appointed apartment offers a premium inner-city living experience in the beating heart of the CBD. It combines bright breezy interiors, modern finishes and breathtaking views over the city to deliver a quality home or investment prospect. It's the location that will truly appeal to buyers as it is very quietly positioned within a dynamic lifestyle setting that has the best of Sydney's major cultural attractions, business centres, leisure and dining out experiences within footsteps from the front door.

Panoramic views over Hyde Park, St Mary's Cathedral and the harbour
 Large windows that maximise natural light and the stunning outlooks
 Easy-to-maintain layout with a generous and bright open

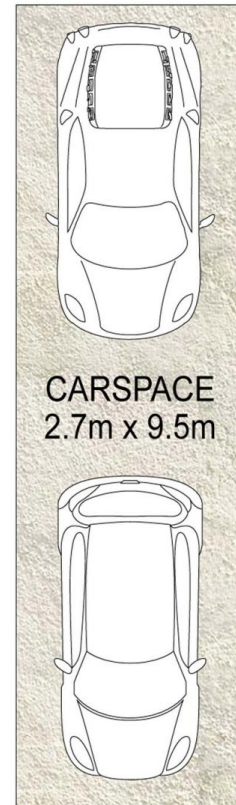
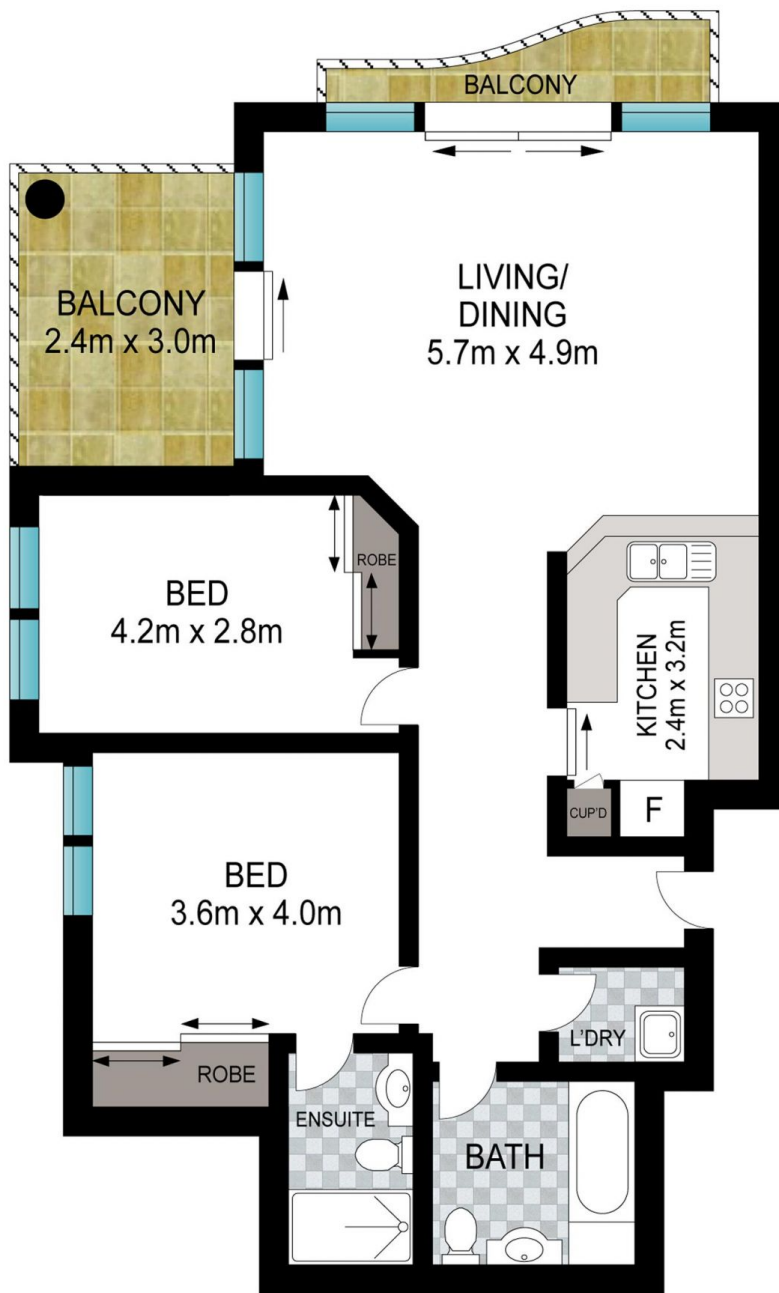
Land Size : 109 sqm
View : <https://www.srmetro.com.au/sale/nsw/sydney-city/sydney/residential/apartment/7206831>



Paul Ding
 02 9283 2832



Bernard Tsang
 02 9283 2832



Scale in metres. Indicative only. Dimensions are approximate. All information contained herein is gathered from sources we believe to be reliable. However we cannot guarantee its accuracy and interested persons should rely on their own enquiries.

2902/197-199 Castlereagh Street, Sydney