



Level 11/197-199 Castlereagh Street Sydney NSW

1 1 1

This coveted well positioned apartment is awash with open City light and views towards Hyde Park. Within walking distance to Town Hall, Pitt Street Mall, financial centre and cultural attractions, it presents an exceptional opportunity for long term investment or ideal city retreat.

Land Size : 74 sqm
View : <https://www.srmetro.com.au/sale/nsw/sydney-city/sydney/residential/apartment/7183169>

Desirable corner apartment with north & east aspects
 Bright and airy open plan living and dining
 Double sized bedroom with built-in
 Rare find two separate balconies off living area
 Functional two-way bathroom with laundry facility
 Ducted air-conditioning, 24-hour concierge
 Security car space on title

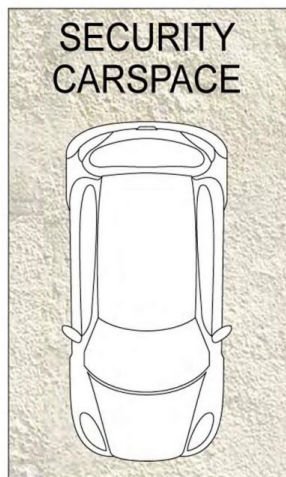
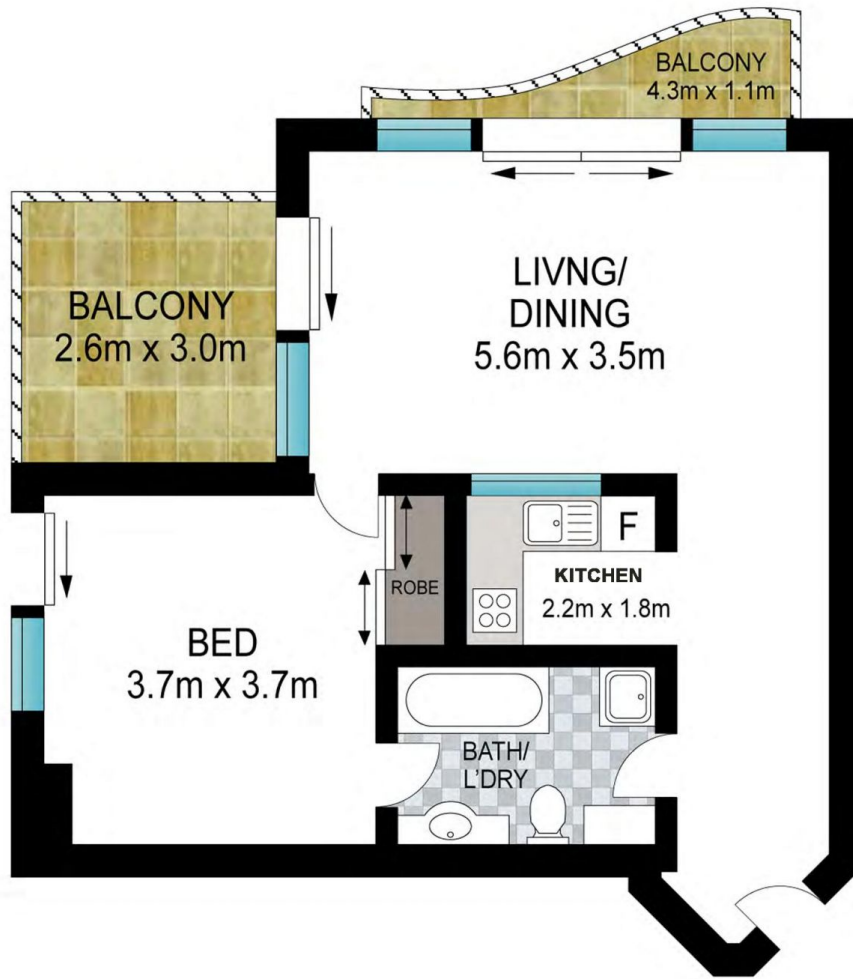
Strata Levy: \$1,595 qtr approx
 Council Rate: \$303 qtr approx
 Water Rate: \$167 qtr approx



Paul Ding
 02 9283 2832



Bernard Tsang
 02 9283 2832



Scale in metres. Indicative only. Dimensions are approximate. All information contained herein is gathered from sources we believe to be reliable. However we cannot guarantee its accuracy and interested persons should rely on their own enquiries.



1103/199 Castlereagh Street, Sydney