

1001/3 George Julius Avenue Zetland NSW

2 2 1

Situated in the heart of Victoria Park, this bright and airy 2-bedroom apartment makes a generously proportioned home with excellent natural light throughout. It enjoys an upper floor position with elevated urban views and offers exceptional security and perfect convenience as part of the acclaimed Platinum development by Payce with premium resort facilities. Step out the front door and you are directly opposite Nuffield Park and within short walking distance to the East Village shopping & dining hub, and Green Square train station.

- * Spacious interiors offer a light-filled open living and dining area
- * Sunlit east facing balcony with elevated urban views
- * Smart modern kitchen with Miele appliances
- * Two double bedrooms with built-ins plus a separate study area

Price : \$ 1,005,000

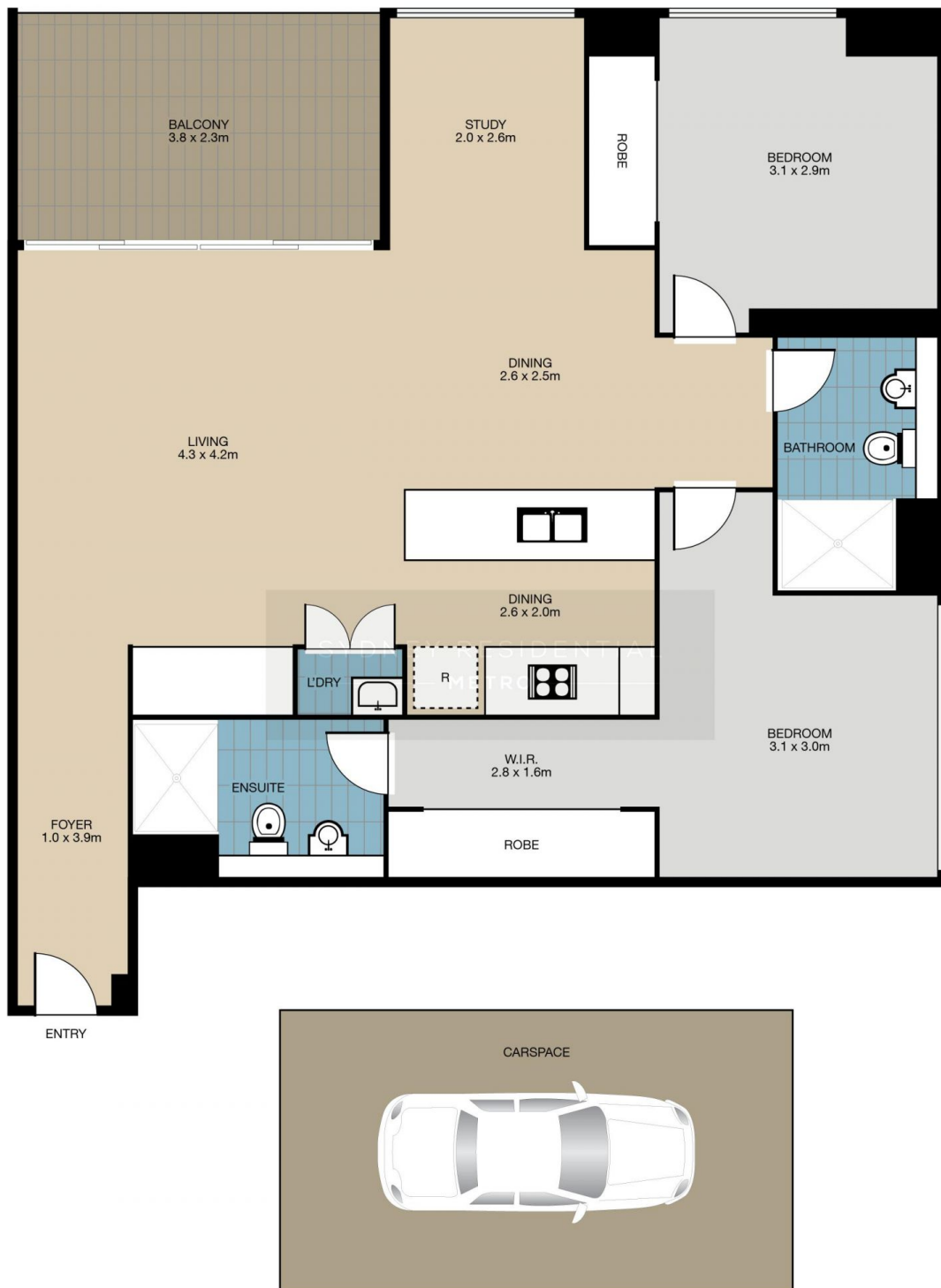
View : <https://www.srmetro.com.au/sale/nsw/eastern-suburbs/zetland/residential/apartment/7178552>



Wilson Diec
02 9283 2832



Bernard Tsang
02 9283 2832



1001/3 George Julius Avenue, ZETLAND



This floor plan is intended as a guide only. Layout dimensions are approximate only. No representations or warranties of any nature whatsoever are given or intended. Any person using this information should rely on their own enquiries. Floor plans by Josef Geranio Studio