



Level 27/267 Castlereagh Street Sydney NSW

3 2 1

Embracing the spectacular views of Hyde Park & Sydney harbour is this tastefully renovated 3 bedroom family apartment of great layout and immense comfort. An exceptional lifestyle purchase opportunity for one of Sydney's most prized Hyde Park precinct, the property is conveniently located opposite the heritage Downing Centre and museum station with a short stroll to World Square shopping.

Northeast facing design aglow in refreshing morning sun
142sqm of living space with enclosed sunroom
Full length of open balcony with stunning vista
3 large bedrooms, main with walk-in robe & study nook
Loads of cupboard space and internal storage
24/7 security, indoor resort facilities and roof top terrace
Security car space on title

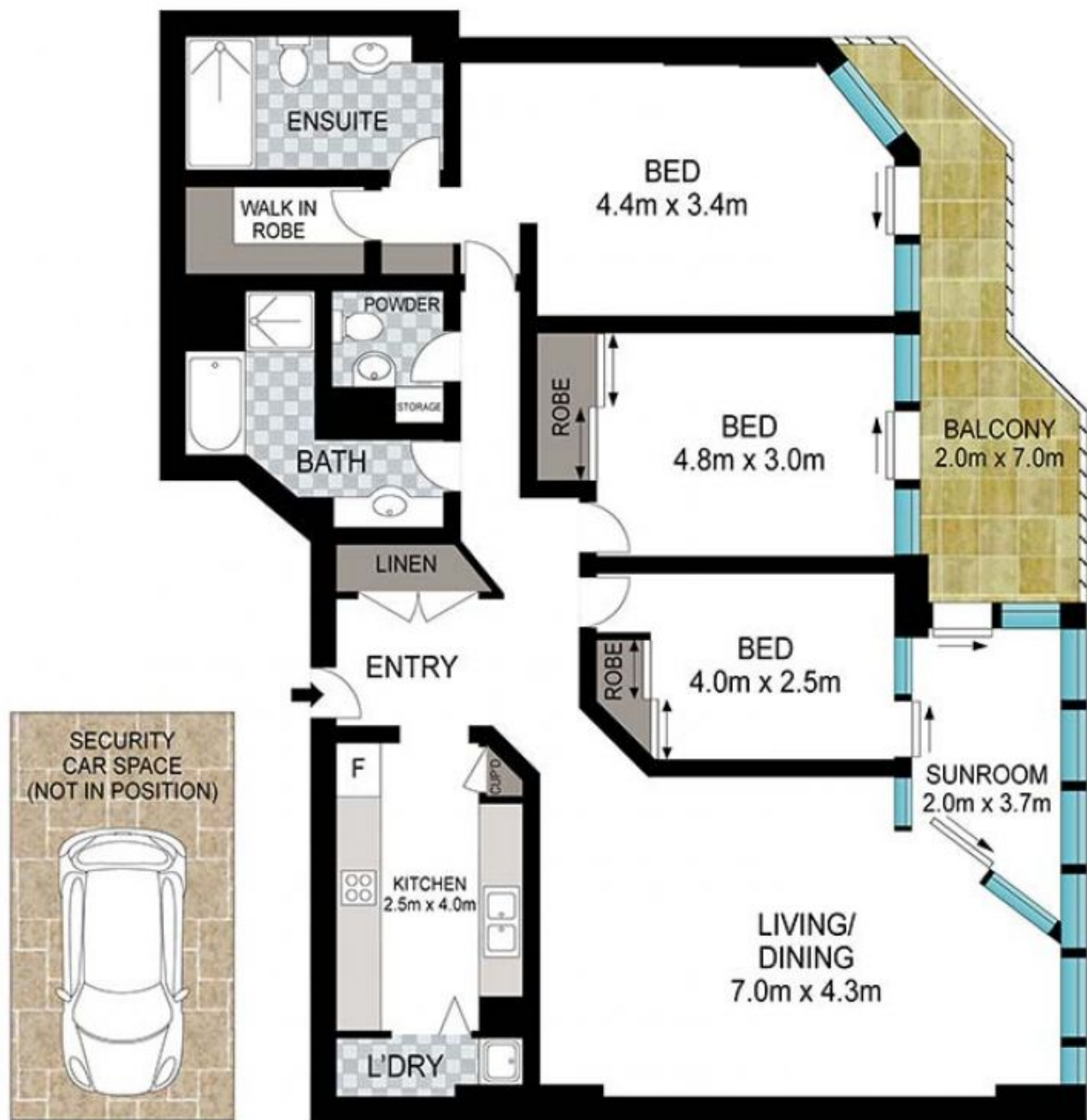
Building Size : 142 sqm
Land Size : 157 sqm
View : <https://www.srmetro.com.au/sale/nsw/sydney-city/sydney/residential/apartment/6687775>



Paul Ding
02 9283 2832



Wilson Diec
02 9283 2832



Approx. apartment size: 142sq.m.
 Approx. car space size: 15sq.m.
 Approx. total size: 157sq.m.



0 1 2 3 4 5

Scale in metres. Indicative only. Dimensions are approximate. All information contained herein is gathered from sources we believe to be reliable. However we cannot guarantee its accuracy and interested persons should rely on their own enquiries.

87/267 Castlereagh Street, Sydney