



Level 23/197 Castlereagh Street Sydney NSW

2 🏠 2 🚿 1 🚗

This coveted well positioned 2 bedroom apartment is awash with open City light and views towards the mountains. Within walking distance to Town Hall, Hyde Park, Pitt Street Mall, financial centre and other cultural attractions, it presents an exceptional opportunity for long term investment or ideal city retreat.

View : <https://www.srmetro.com.au/sale/nsw/sydney-city/sydney/residential/apartment/5812534>

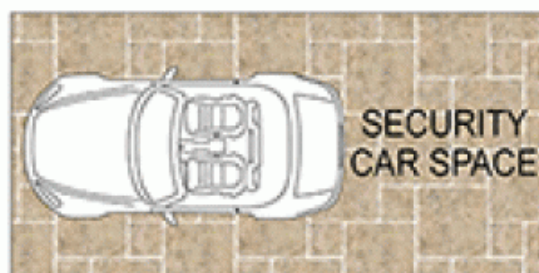
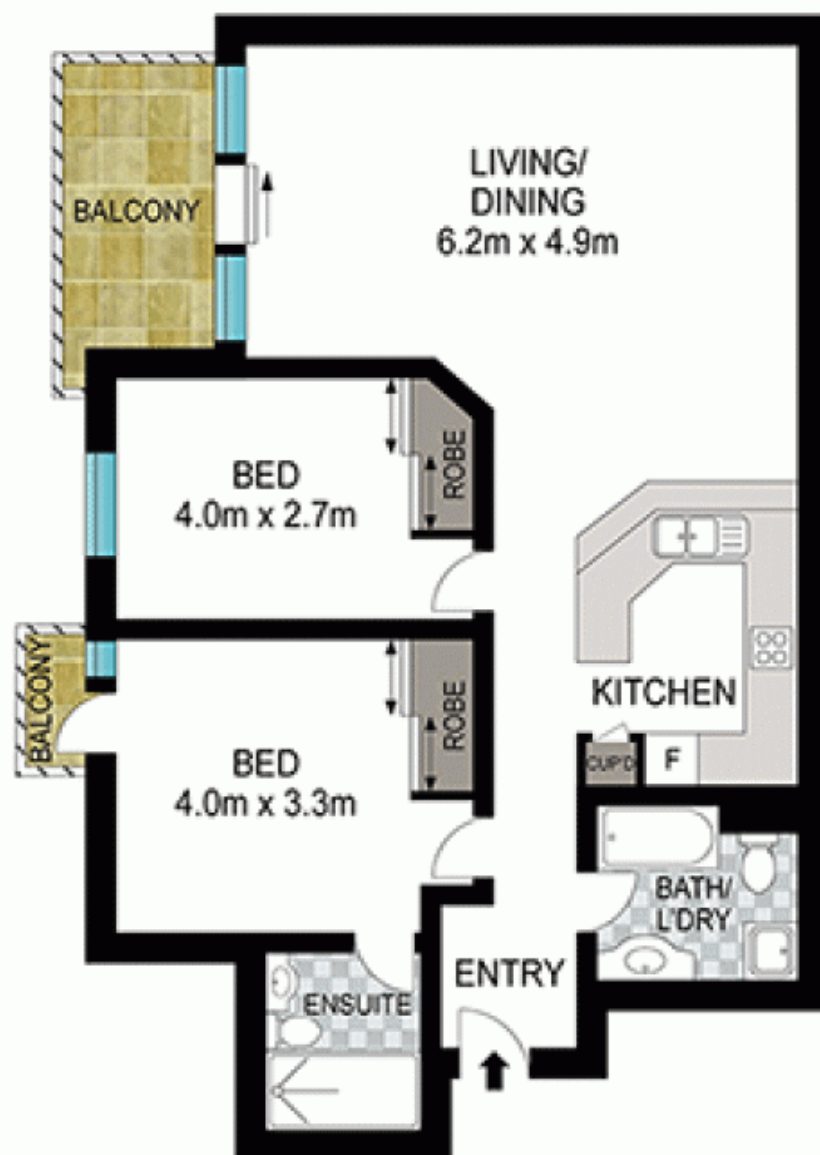
Spacious inviting sun-drenched open plan living
2 double sized bedrooms, main with ensuite and balcony
Private entrance hall leading to a combined dining/lounge
Sought after Hyde Park locale
Easy level walk to major attractions
Well-maintained complex with active owners committee.
Concierge service and car space on title



Paul Ding
02 9283 2832

Strata Levy: \$2,574 qtr approx
Council Rate: \$296 qtr approx

<https://www.srmetro.com.au>



0 1 2 3 4 5

Scale in metres. Indicative only. Dimensions are approximate. All information contained herein is gathered from sources we believe to be reliable. However we cannot guarantee its accuracy and interested persons should rely on their own enquiries.



2808/199 Castlereight Street, Sydney