



2108/343 Pitt Street Sydney NSW

2  **2**  **1** 

Positioned in the very vibrant heart of the city's famed entertainment district, with moments to George Street cinema and stroll to Town Hall station, Pitt Street Mall; the Century Tower is an established reputable residence surrounded by an array of cafes, restaurants, shopping and all the great amenities City has to offer.

Price : \$ 1,290,000

View : <https://www.srmetro.com.au/sale/nsw/sydney-city/sydney/residential/apartment/5717477>

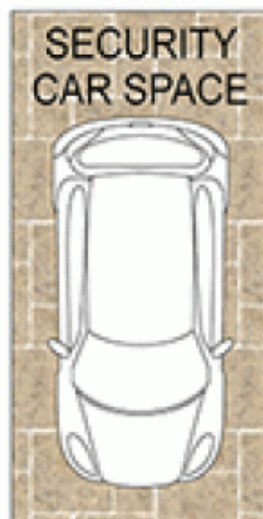
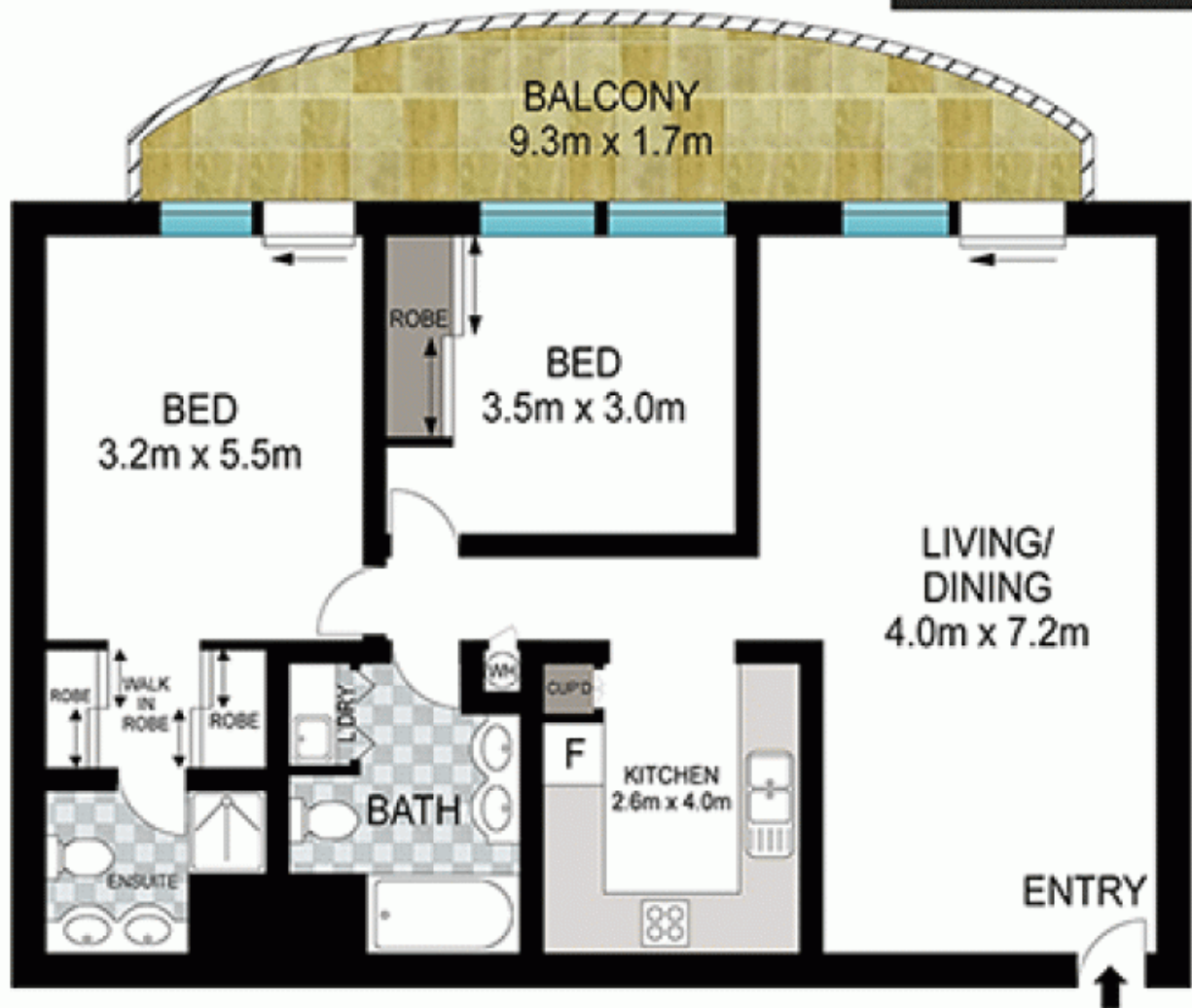
Fully renovated to contemporary standard
High 3m ceiling with full glass balcony
2 large bedrooms, main with ensuite bathroom
Separate title for security car space
Concierge services and star rated facilities



Paul Ding
02 9283 2832

Strata levy: \$1,595 qtr approx
Strata car space: \$115 qtr approx
Council rates: \$292 qtr approx

<https://www.srmetro.com.au>



Scale in metres. Indicative only. Dimensions are approximate. All information contained herein is gathered from sources we believe to be reliable. However we cannot guarantee its accuracy and interested persons should rely on their own enquiries.

2108/343 Pitt Street, Sydney