



267 Castlereagh Street Sydney NSW

3 2 1

Working from home has never been so attractive with this sky home that features the spectacular views of Hyde Park & Sydney harbour. A tastefully presented 3 bedroom apartment with immense comfort and charm, it offers an alternative lifestyle purchase for one of Sydney's most prized Hyde Park area. The property is conveniently located close to Downing Centre and other court houses and is on the fringe of the cultural hub of Surry Hills.

East facing design aglow in refreshing morning sun
142sqm of living space with both open and enclosed balcony

3 large bedrooms, main with walk-in robe & study nook

2nd bathroom with a separate WC facility

Sleek functional French kitchen loaded with smart sophistication

On site concierge, indoor resort facilities and roof top

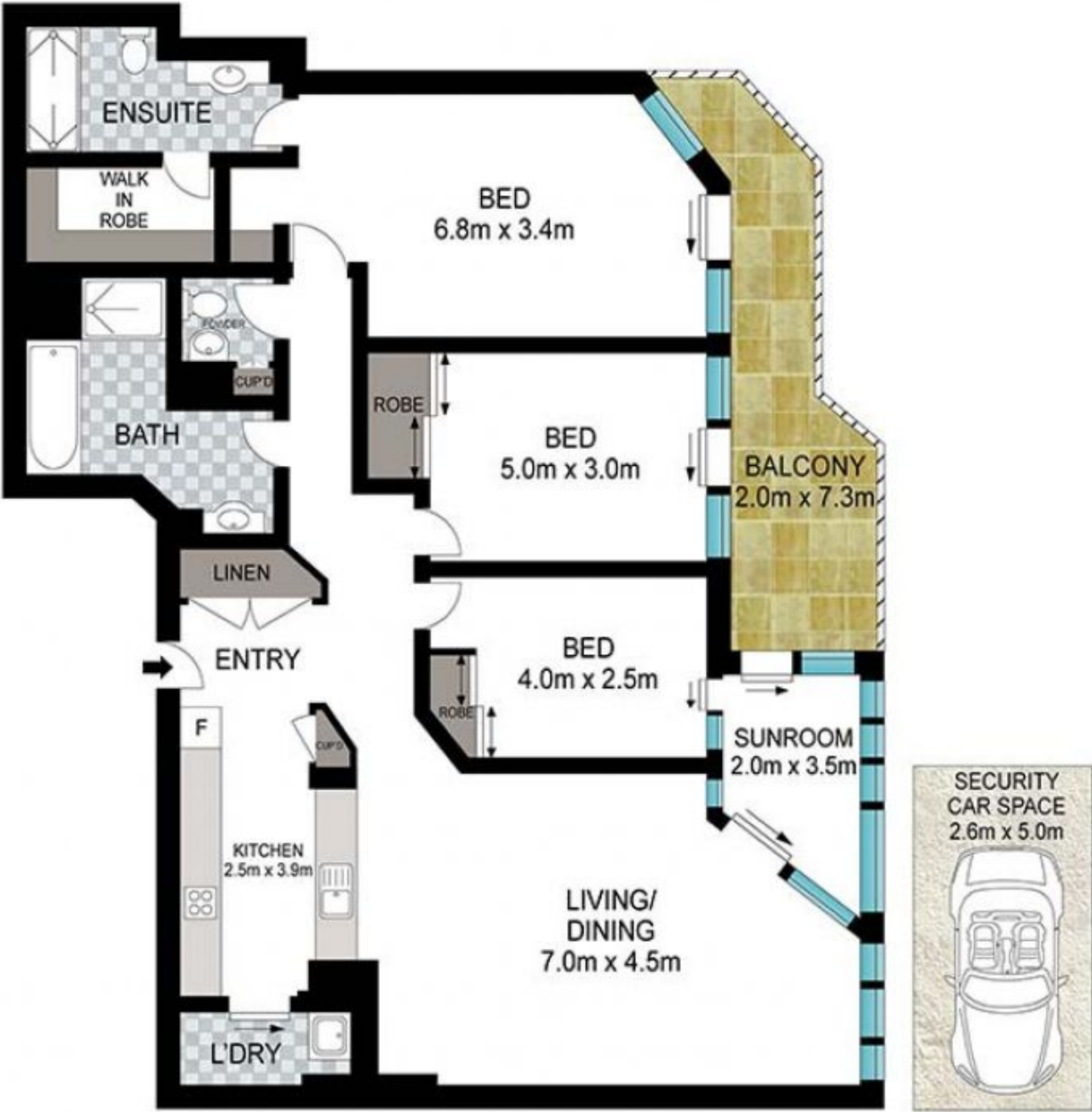
Price : \$ 1,500,000
Building Size : 142 sqm
Land Size : 156 sqm
View : <https://www.srmetro.com.au/sale/nsw/sydney-city/sydney/residential/apartment/5717475>



Paul Ding
02 9283 2832



Wilson Diec
02 9283 2832



Scale in metres. Indicative only. Dimensions are approximate. All information contained herein is gathered from sources we believe to be reliable. However we cannot guarantee its accuracy and interested persons should rely on their own enquiries.



103/267 Castlereagh Street, Sydney