



47/308 Pitt Street Sydney NSW

2 2 1

With its prime mid town location and rare features, the Princeton Apartment is still one of the most sought after residential towers in Sydney CBD for any genuine home buyers.

Set right in between the future Metro station and Telstra Plaza, and moments to Town Hall, Hyde Park and Pitt Street Mall, with every conceivable amenity at its doorstep, this well presented and well laid out 2 bedroom plus sunroom/study apartment is enviously positioned with unmatched convenience.

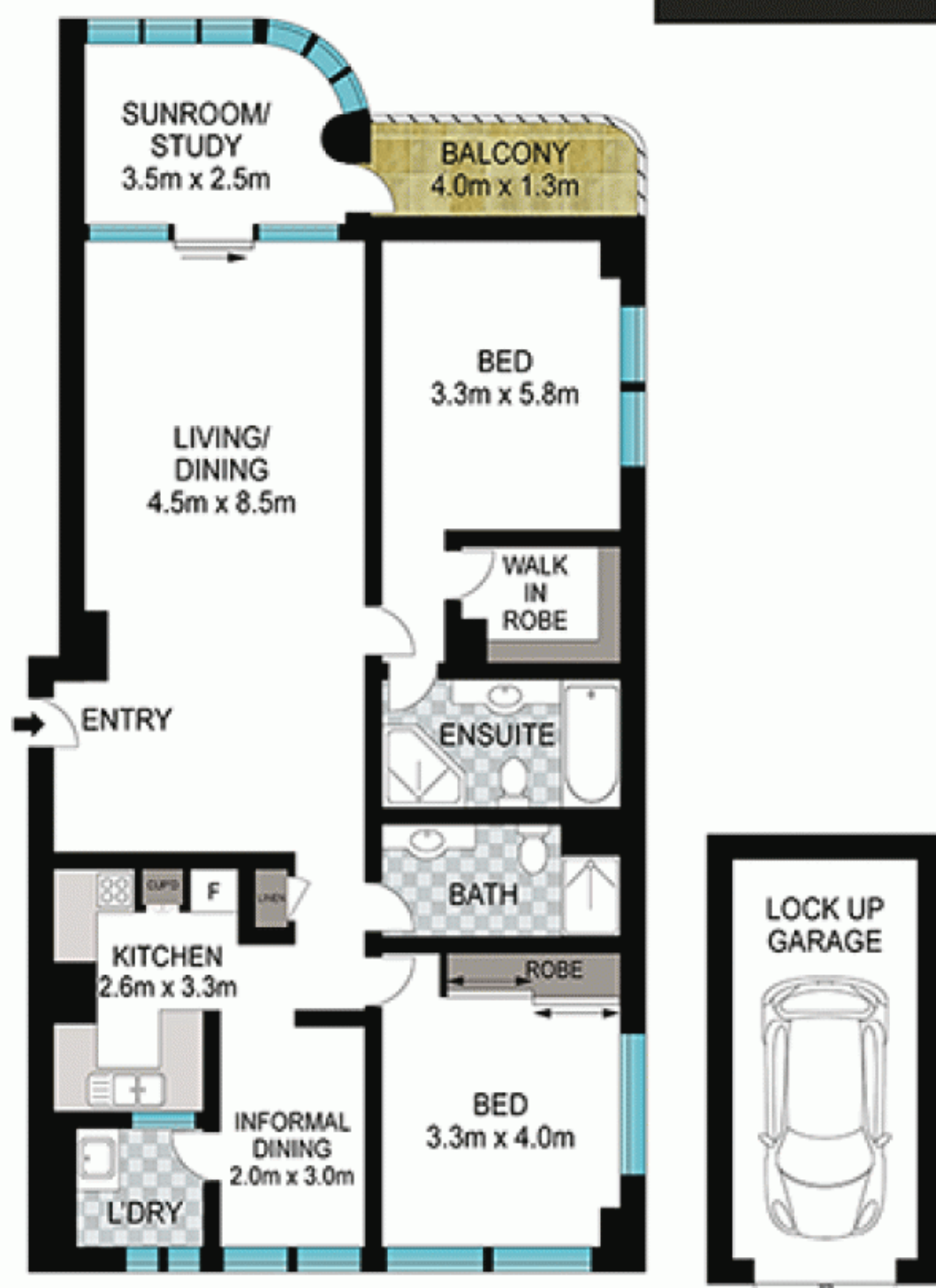
Featuring a well proportioned open plan, with spacious functional living & dining areas flowing onto a unique sunroom/study that overlooks the roof top terrace of the newly open Greenland Hotel; smart appointed kitchen with a decent breakfast area, granite bench top and built-in

Price : \$ 1,290,000
Building Size : 113 sqm
Land Size : 127 sqm
View : <https://www.srmetro.com.au/sale/nsw/sydney-city/sydney/residential/apartment/5717418>



Paul Ding
 02 9283 2832

<https://www.srmetro.com.au>



Approx. total internal area: 113sq.m
Approx. garage area: 14sq.m.
Approx. total area: 127sq.m.

0 1 2 3 4 5

Scale in metres. Indicative only. Dimensions are approximate. All information contained herein is gathered from sources we believe to be reliable. However we cannot guarantee its accuracy and interested persons should rely on their own enquiries.



47/308 Pitt Street, Sydney