



36/267 Castlereagh Street Sydney NSW

2 🏠 2 🚿 1 🚗

Set at the premium northern end of the Museum Tower apartment is this well presented spacious 2 bedroom apartment of immense comfort and charm. An alternative purchase option for one of Sydney's most prized Hyde Park area, the property is conveniently located close to museum station and on the fringe of the colorful and trendy Surry Hills.

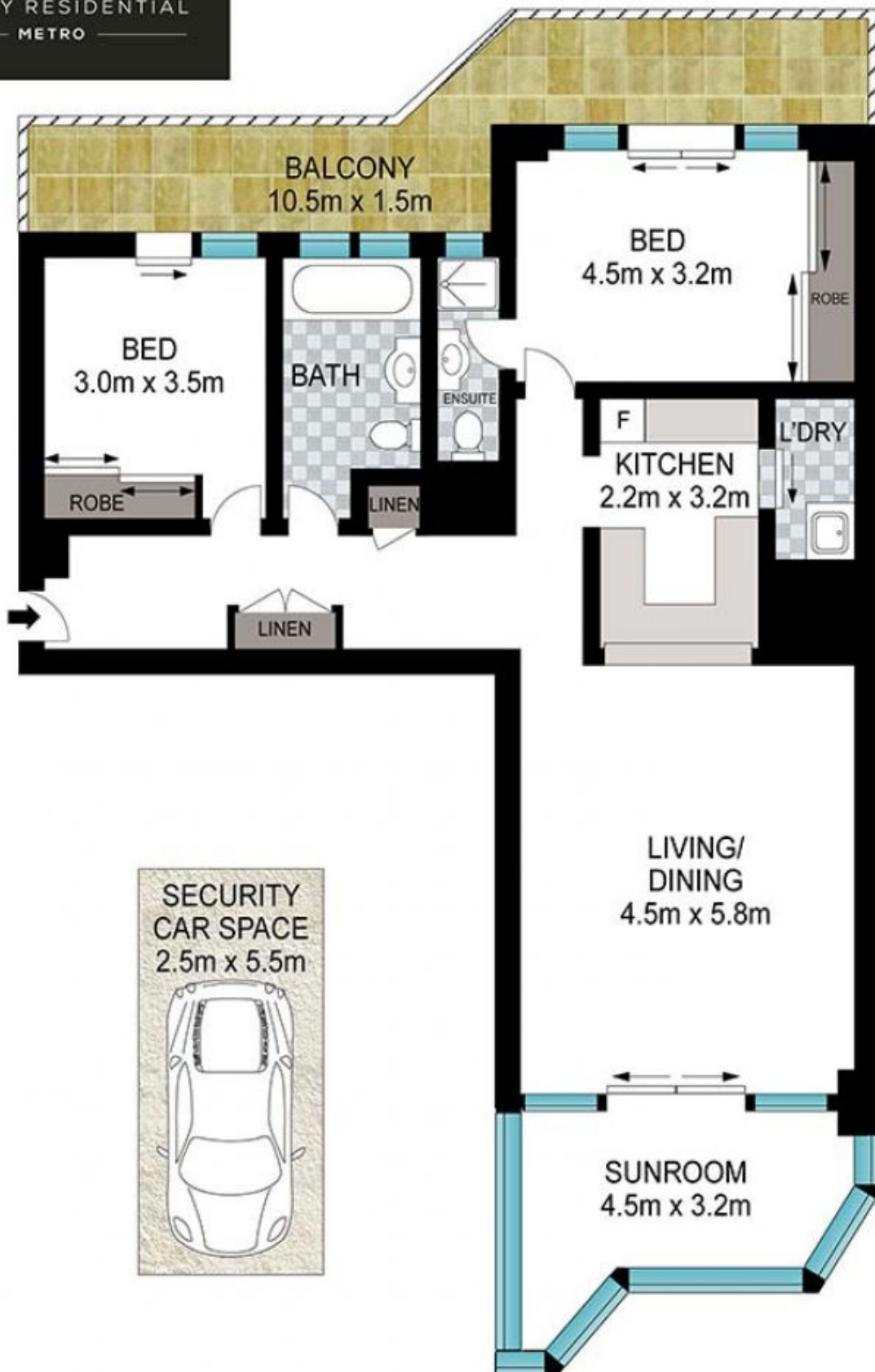
Building Size : 108 sqm
Land Size : 123 sqm
View : <https://www.srmetro.com.au/sale/nsw/sydney-city/sydney/residential/apartment/5717372>

East/West cross ventilation layout aglow in refreshing morning sun
 Desirable corner position with only one common wall
 108sqm of living space with abundance of natural light
 2 bedroom, 2 bathroom, large sunroom plus open balcony
 Ready to move in, with scope for improvement
 Secure car space on title , plus indoor facilities



Paul Ding
 02 9283 2832

Great opportunity to purchase a quality apartment at a



Scale in metres. Indicative only. Dimensions are approximate. All information contained herein is gathered from sources we believe to be reliable. However we cannot guarantee its accuracy and interested persons should rely on their own enquiries.

36/267 Castlereagh Street, Sydney