



4206/2 Quay Street Sydney NSW

3 2 2

Superbly presented with panoramic views to Botany Bay, this 112sqm 3 bedroom apartment offers an exceptional home for those seeking modern city living or convenience in the heart of the city and literally metres from the all-new shopping retails & eateries in Darling Square.

- All major rooms with balcony access
- Master bedroom with ensuite and walk-in robes
- Timber flooring in living and dining area
- Internal laundry, R/C air-conditioning
- Visual intercom & 24 hr concierge service
- Security parking for 2 vehicles
- Direct access to shopping centre
- Resort facilities which include heated pool, tennis courts, jogging tracks

Strata levies: \$2,945.63pq

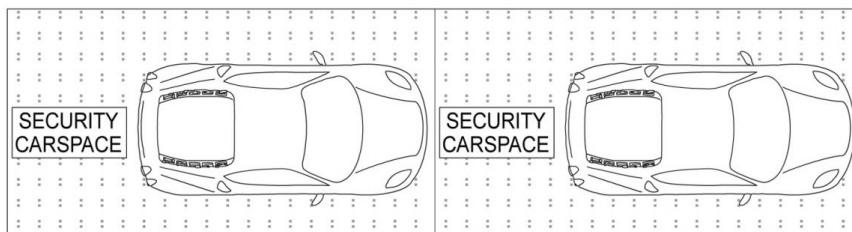
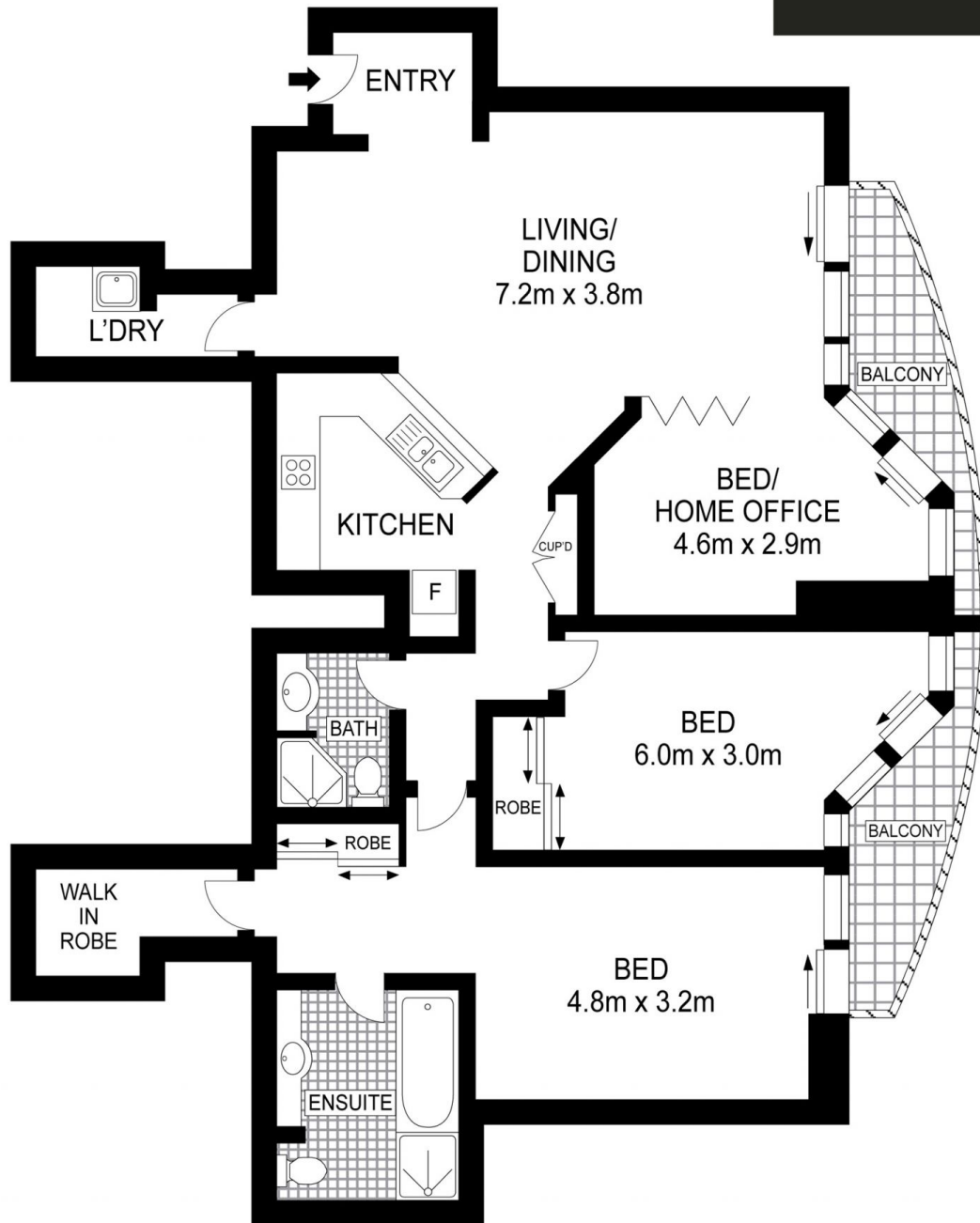
Building Size : 112 sqm
View : <https://www.srmetro.com.au/sale/nsw/sydney-city/sydney/residential/apartment/5717351>



Bernard Tsang
02 9283 2832



Wilson Diec
02 9283 2832



0 1 2 3 4 5

Approx. total internal area: 112sq.m.



Scale in metres. Indicative only. Dimensions are approximate. All information contained herein is gathered from sources we believe to be reliable. However we cannot guarantee its accuracy and interested persons should rely on their own enquiries.

4206/2 Quay Street, Haymarket