



17-25 Wentworth Avenue Sydney NSW

2 1 1

Immersed in the City's acclaimed cosmopolitan Hype Park precinct with low strata levies, this excellent refreshed 2 bedroom apartment presents a wonderfully convenient and affordable city address. An astute investment opportunity, it's just moments to the financial centre, cultural attractions, great dining and entertainment.

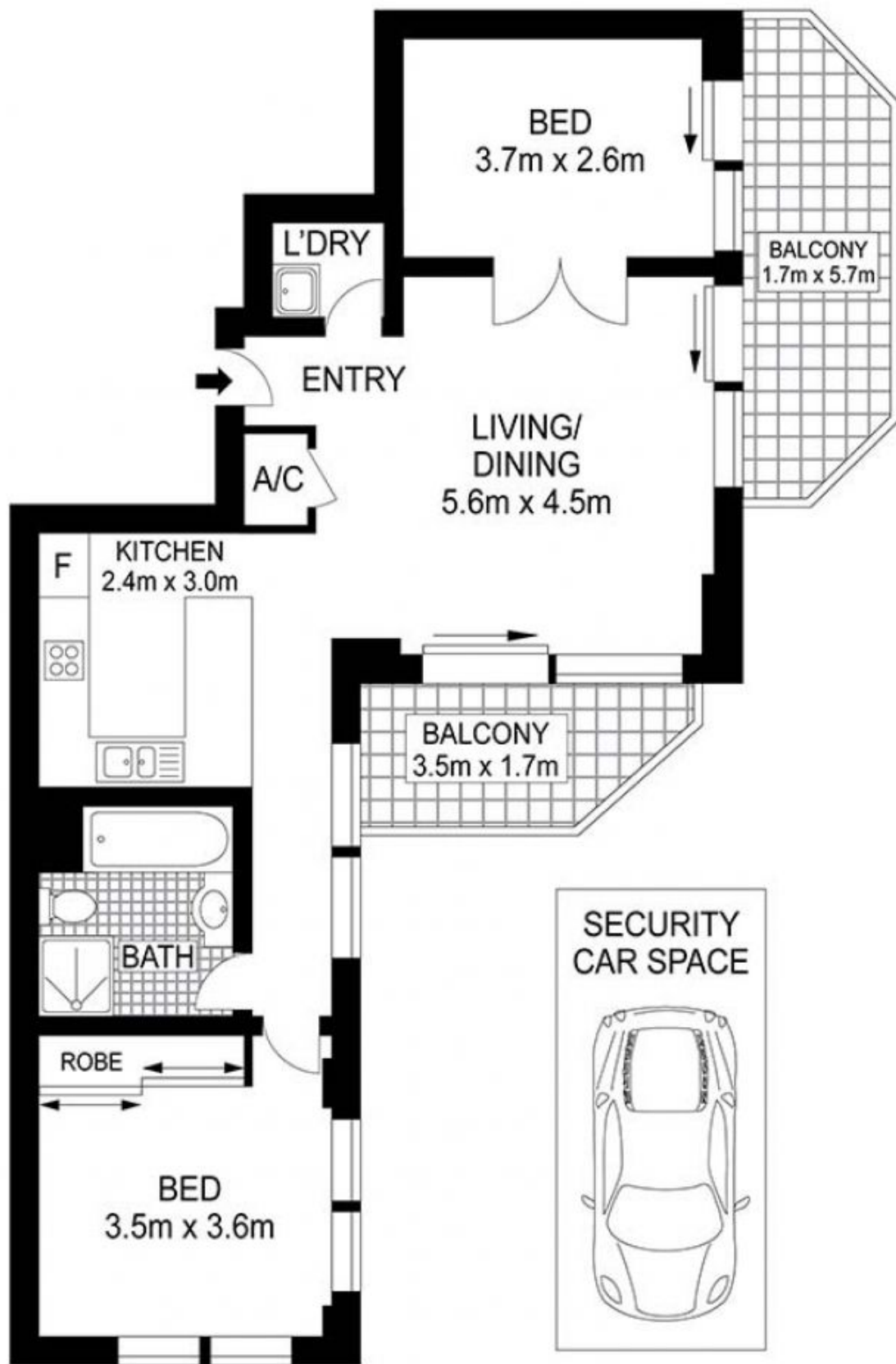
Desirable corner position with two aspects
East facing windows ensuring abundance of natural light
Recently refreshed with caesar stone kitchen bench top
Floating floor board throughout with two functional balconies
Valuable security car space on title
Strong consistent rental returns

Strata levies: \$1133 qtr approx
Council Rate: \$224 qtr approx

Building Size : 86 sqm
View : <https://www.srmetro.com.au/sale/nsw/sydney-city/sydney/residential/apartment/5717329>



Paul Ding
02 9283 2832



Approx. apartment size: 72sq.m.
 Approx. car space size: 14sq.m.



Scale in metres. Indicative only. Dimensions are approximate. All information contained herein is gathered from sources we believe to be reliable. However we cannot guarantee its accuracy and interested persons should rely on their own enquiries.

1/17-25 Wentworth Street, Sydney