



Level 17/28 Harbour Street Sydney NSW

3 3 1

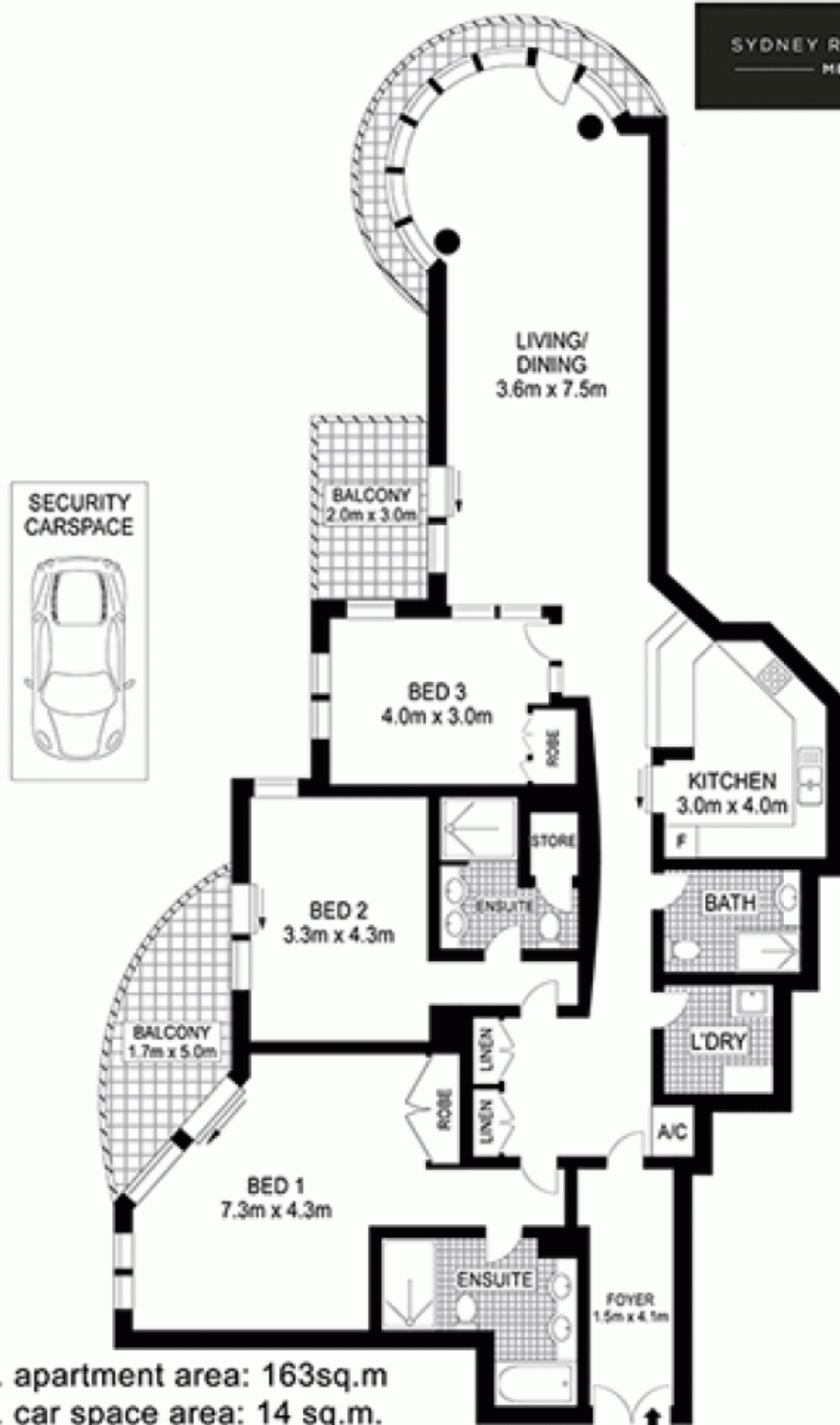
Embracing tranquil water, garden outlooks and cosmopolitan surrounds from its highset position, this exceptional 163sqm 3 bed 3 bath apartment is positioned in the very vibrant heart of the city's famed entertainment district, directly opposite Darling Harbour and a stroll to Chinatown or Town Hall station. It's nestled in a coveted established residence of Harbour Garden Tower and steps from an array of cafes, restaurants, shopping and all the great amenities City has to offer.

- R/C Air Conditioning
- Huge 163sqm of living space
- 3 large bedrooms two with ensuite bathrooms
- Private entrance hall way leading to a round open lounge
- Security car space
- Concierge and roof top pool facilities
- Timber Flooring throughout

Building Size : 163 sqm
Land Size : 177 sqm
View : <https://www.srmetro.com.au/lease/nsw/sydney-city/sydney/residential/apartment/5717288>



Ben Murray
02 9283 2832



Approx. apartment area: 163sq.m
Approx. car space area: 14 sq.m.
Approx. total area: 177sq.m.

0 1 2 3 4 5

Scale in metres. Indicative only. Dimensions are approximate. All information contained herein is gathered from sources we believe to be reliable. However we cannot guarantee its accuracy and interested persons should rely on their own enquiries.



1702/28 Harbour Street, Sydney