



7/6A Defries Avenue Zetland NSW

2 🛏 2 🚿 1 🚗

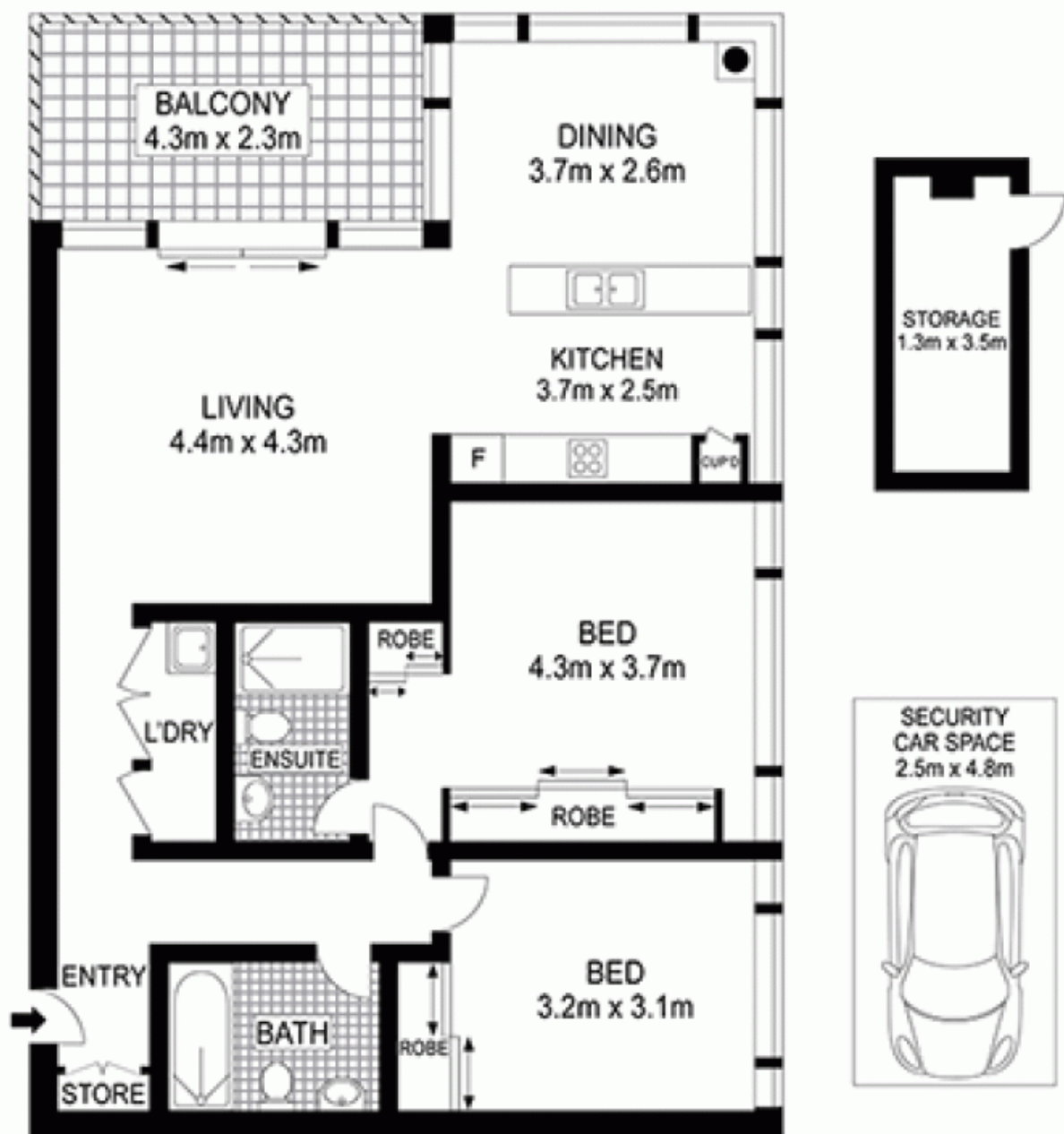
Set right opposite the vibrant East Village Shopping Centre, and designed by renowned architect Turner Associates with easy access to every conceivable amenity, this spacious 2 bedroom apartment in the popular APEX complex presents an exceptionally convenient and affordable opportunity for first home buyers and investors.

Price : \$ 870,000
Land Size : 111 sqm
View : <https://www.srmetro.com.au/sale/nsw/easter-n-suburbs/zetland/residential/apartment/5717261>

Sought after North-east aspect with separate open plan living and dining
 Great corner position with bright natural light and good ventilation for all rooms
 Sun drenched entertainer's balcony overlooking shops and cafes
 Double size 2 beds, 2 baths & internal laundry
 Contemporary island kitchen with stone bench top
 Loads of cupboard space plus air conditioning
 Total 111sqm on title, including car space on ground floor



Paul Ding
 02 9283 2832



Scale in metres. Indicative only. Dimensions are approximate. All information contained herein is gathered from sources we believe to be reliable. However we cannot guarantee its accuracy and interested persons should rely on their own enquiries.



7/6A Defriers Avenue, Zetland