



114/88 Vista Street Mosman NSW

1 1 1

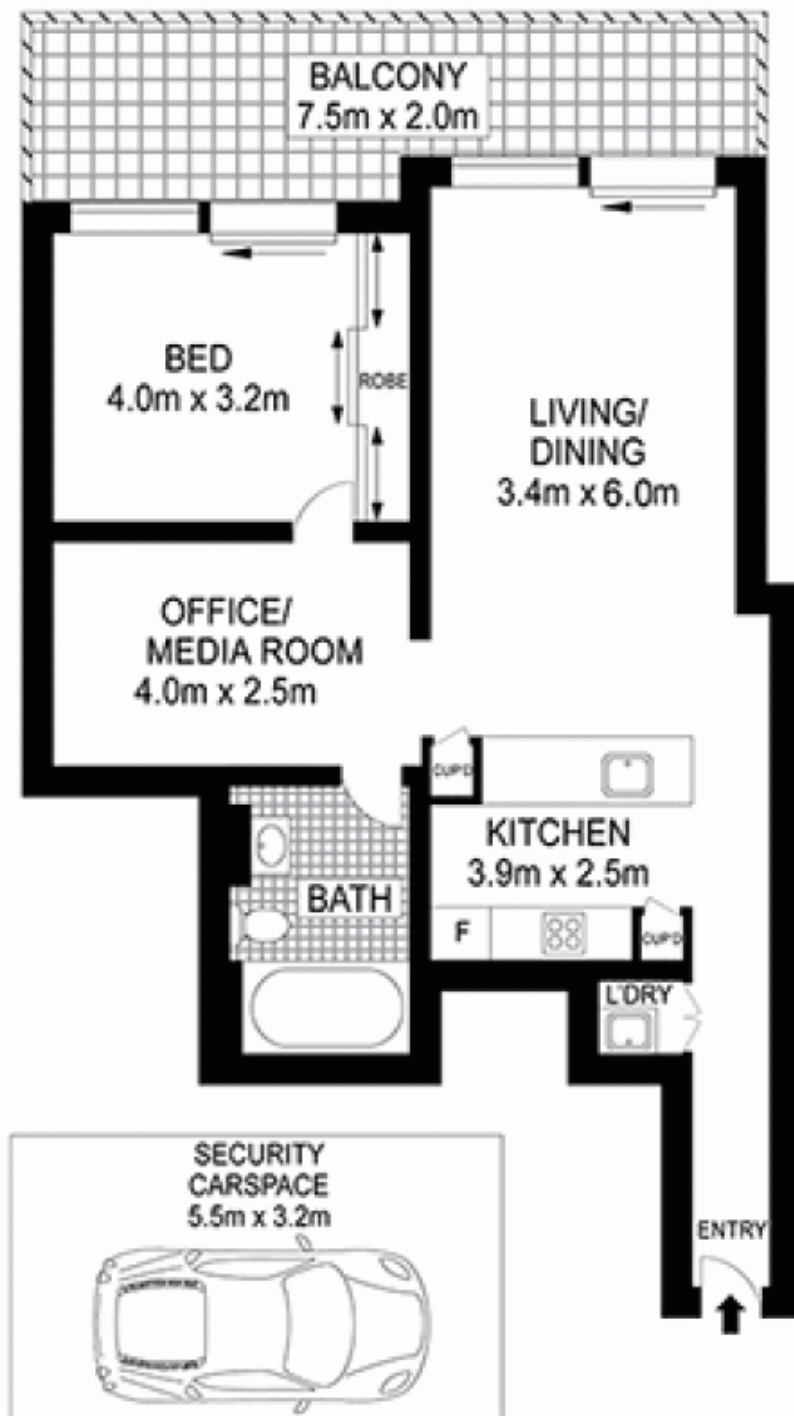
Peacefully positioned in the well regarded 'Nuova' security building, this spacious 77sqm apartment is well located in the heart of Mosman Village, within a stone throw of "The Mews", City bus and vibrant shops and cafes to offer a low maintenance lifestyle of absolute convenience.

Exceptional large living space with study alcove
 Contemporary neutral decor aglow in morning sun light
 Charming well presented complex with concierge service
 Generous double bedroom with direct access to an entertaining balcony
 Large 17sqm of parking space on title
 An astute purchase opportunity for owner-occupiers or investors

Price : \$ 765,000
Building Size : 77 sqm
Land Size : 94 sqm
View : <https://www.srmetro.com.au/sale/nsw/north-shore-lower/mosman/residential/apartment/5717225>



Paul Ding
 02 9283 2832



Scale in metres. Indicative only. Dimensions are approximate. All information contained herein is gathered from sources we believe to be reliable. However we cannot guarantee its accuracy and interested persons should rely on their own enquiries.



114/88 Vista Street, Mosman