



Level 26/197-199 Castlereagh Street Sydney NSW

1

A great opportunity for a first home purchase or astute investment in the much sought after Victoria Tower, a residential complex close to Centre Point and Town Hall. This affordable studio apartment presents a prestigious city address, and is just moments to the financial centre, cultural attractions, great dining and entertainment.

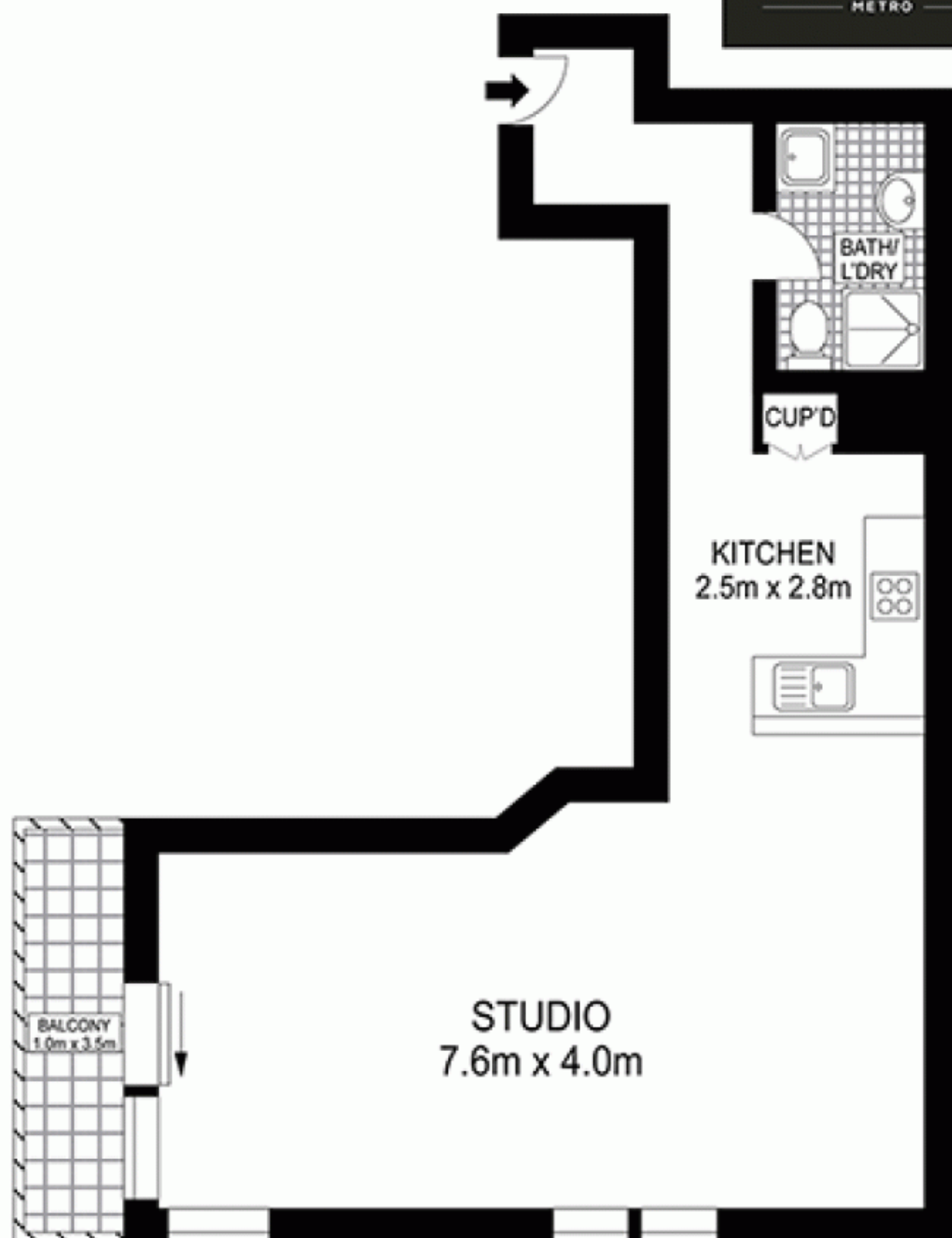
Spacious 50sqm light filled enclave
Practical layout to create bedroom living and dining area
Functional gas kitchen with ample cover space
Large bathroom with integrated laundry space
On site concierge & 24 hour security
Ducted air conditioning
Strong consistent rental returns

Strata: \$793.74 qtr approx
Council: \$272 qtr approx

Land Size : 50 sqm
View : <https://www.srmetro.com.au/sale/nsw/sydney-city/sydney/residential/apartment/5717142>



Paul Ding
02 9283 2832



Approx. apartment size: 50sq.m.



Scale in metres. Indicative only. Dimensions are approximate. All information contained herein is gathered from sources we believe to be reliable. However we cannot guarantee its accuracy and interested persons should rely on their own enquiries.



2605/197 Castlereagh Street, Sydney CBD