



## Level 1/197-199 Castlereagh Street Sydney NSW

1 1 1

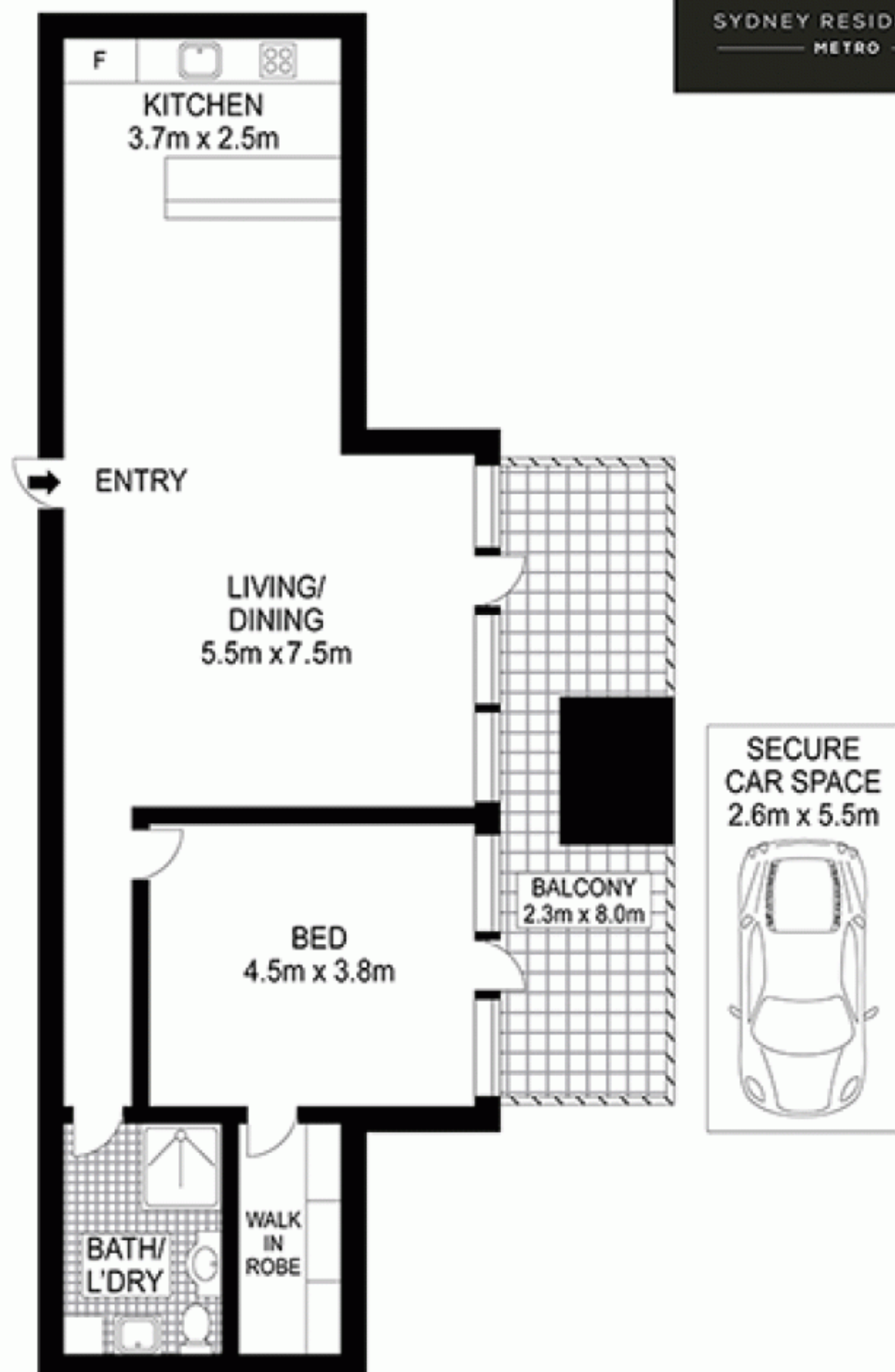
Located on the parking level of the acclaimed well-managed complex of Victoria Tower, this exceptionally large apartment presents a wonderfully convenient and affordable city address. An astute investment opportunity capturing part of sought after Hyde Park local, it's just moments to the financial centre, cultural attractions, great dining and entertainment.

90sqm of extra large living space  
Double access to east facing balcony  
Spacious walk in robe in bedroom  
Scope to improve for a spectacular City pad  
Car space desirably located next to apartment  
Strong consistent rental returns  
Low strata levies of only \$528 qtr approx.

**Building Size** : 90 sqm  
**View** : <https://www.srmetro.com.au/sale/nsw/sydney-city/sydney/residential/apartment/5717039>



**Paul Ding**  
02 9283 2832



0 1 2 3 4 5

Scale in metres. Indicative only. Dimensions are approximate. All information contained herein is gathered from sources we believe to be reliable. However we cannot guarantee its accuracy and interested persons should rely on their own enquiries.



101/199 Castlereagh Street, Sydney