



### A201/2 Bobbin Head Road Pymble NSW

3 2 1

Situated in prestigious 'Pymble Grand', this magnificent 3 bedroom corner apartment offers a low maintenance lifestyle of undeniable space and versatility. Its spacious living and dining are complemented by a generous alfresco balcony, ideal for outdoor entertaining.

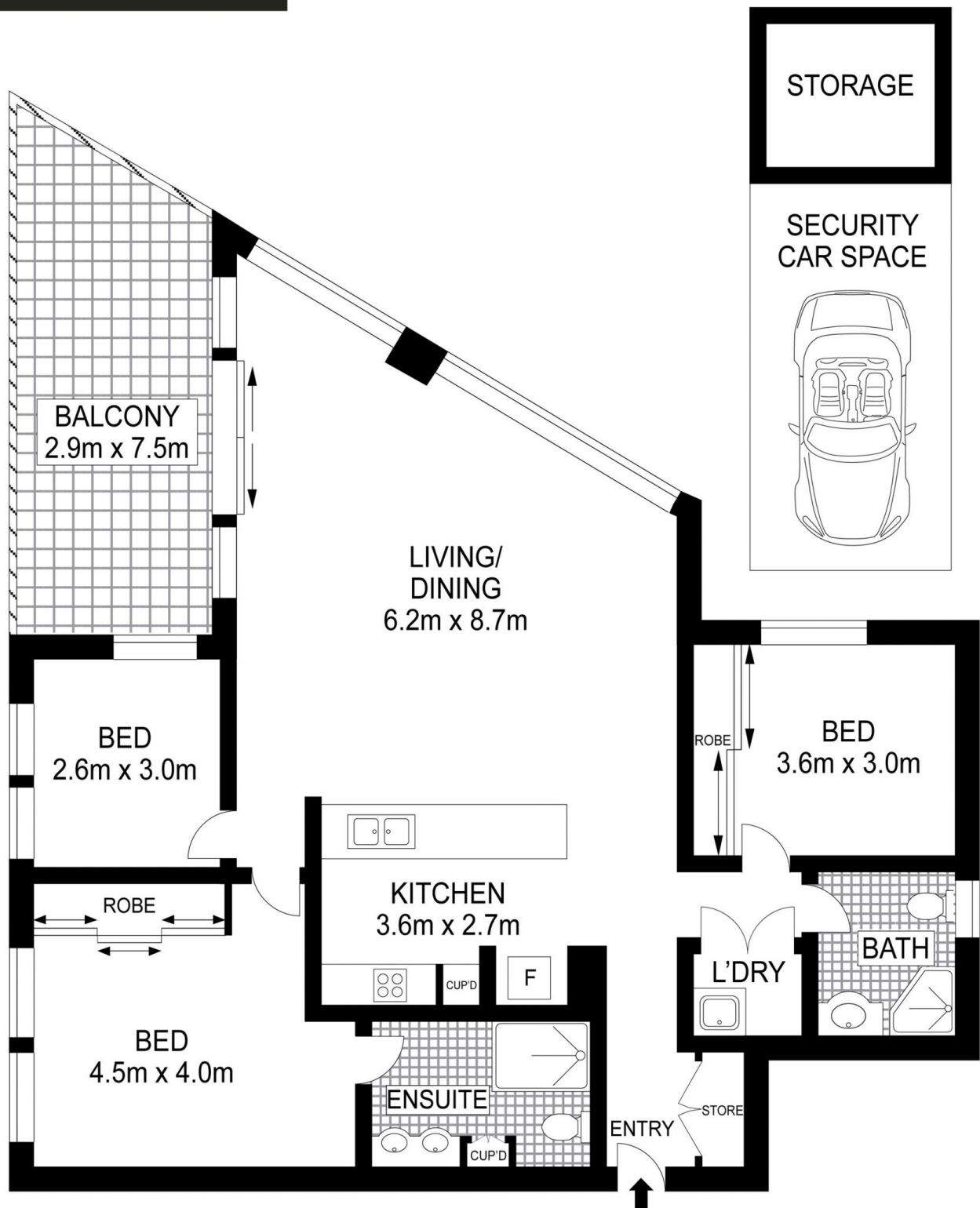
**Price** : \$ 950,000

**View** : <https://www.srmetro.com.au/sale/nsw/north-shore-upper/pymble/residential/apartment/5716944>

- Open plan layout open to sunlit east facing balcony
- Timber flooring throughout
- CaesarStone island kitchen with European gas appliances
- Stylish master ensuite with frameless shower and twin vanity basins
- Concealed laundry, plenty of in-built storage, ducted A/C
- Lift access to secure undercover parking and storage cage
- Only one common wall, visitors parking
- Within Pymble Public School catchment area



**Bernard Tsang**  
02 9283 2832



Scale in metres. Indicative only. Dimensions are approximate. All information contained herein is gathered from sources we believe to be reliable. However we cannot guarantee its accuracy and interested persons should rely on their own enquiries.

APARTMENT: 122sq.m.  
CAR SPACE: 17sq.m.  
TOTAL: 139sq.m.



A201/2 Bobbin Head Road, Pymble