



336 Sussex Street Sydney NSW

2  1  1 

Positioned in the very vibrant heart of the city's famed entertainment district, close proximity to Darling Harbour and Town Hall station, the Windsor Plaza is an established residence surrounded by an array of cafes, restaurants, shops and all the great amenities city has to offer.

View : <https://www.srmetro.com.au/sale/nsw/sydney-city/sydney/residential/apartment/5716899>

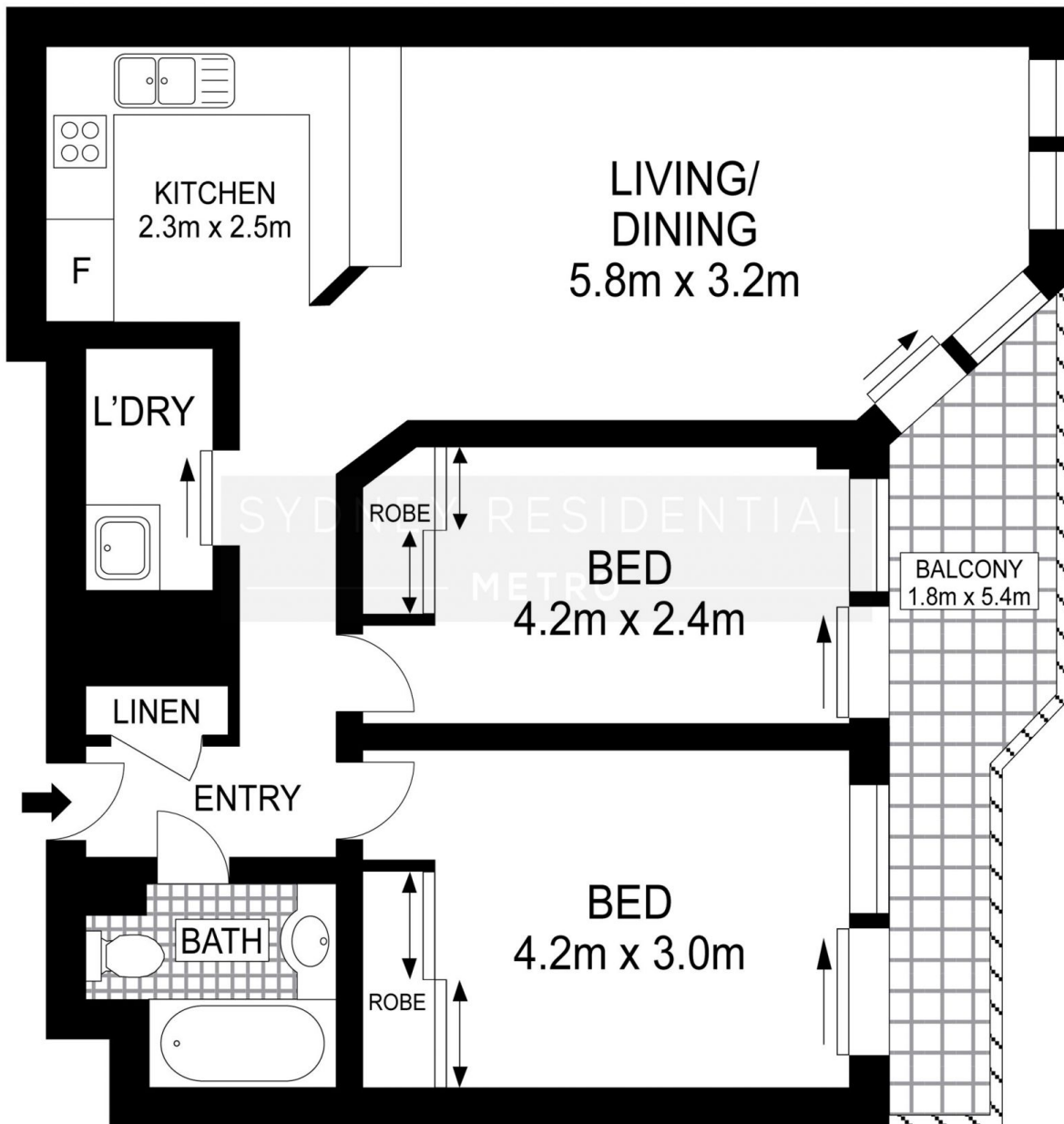
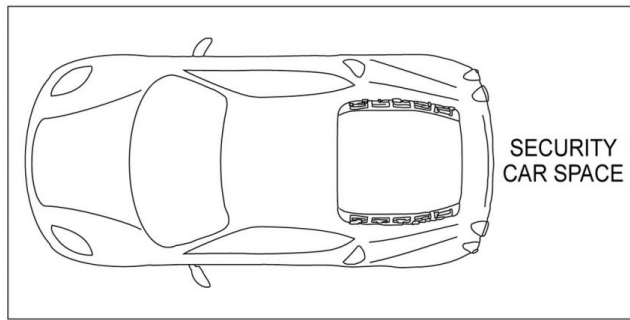
Desirable north west aspect
Open plan living/dining extending to sunny balcony
Renovated kitchen with stone bench top
Access to balcony from both bedrooms
Secure car space on title
Lease expires Oct 2018



Paul Ding
02 9283 2832

Strata Admin: \$1672 qtr approx.
Capital Work: \$1037 qtr approx
Council: \$256 qtr approx
Water: \$177 qtr approx

<https://www.srmetro.com.au>



APARTMENT: 72sq.m.
CAR SPACE: 15sq.m.
TOTAL: 87sq.m.



Scale in metres. Indicative only. Dimensions are approximate. All information contained herein is gathered from sources we believe to be reliable. However we cannot guarantee its accuracy and interested persons should rely on their own enquiries.

115/336 Sussex Street, Sydney