



**38/222-228 Sussex Street Sydney NSW**

2 🏠 2 🚿 1 🚗

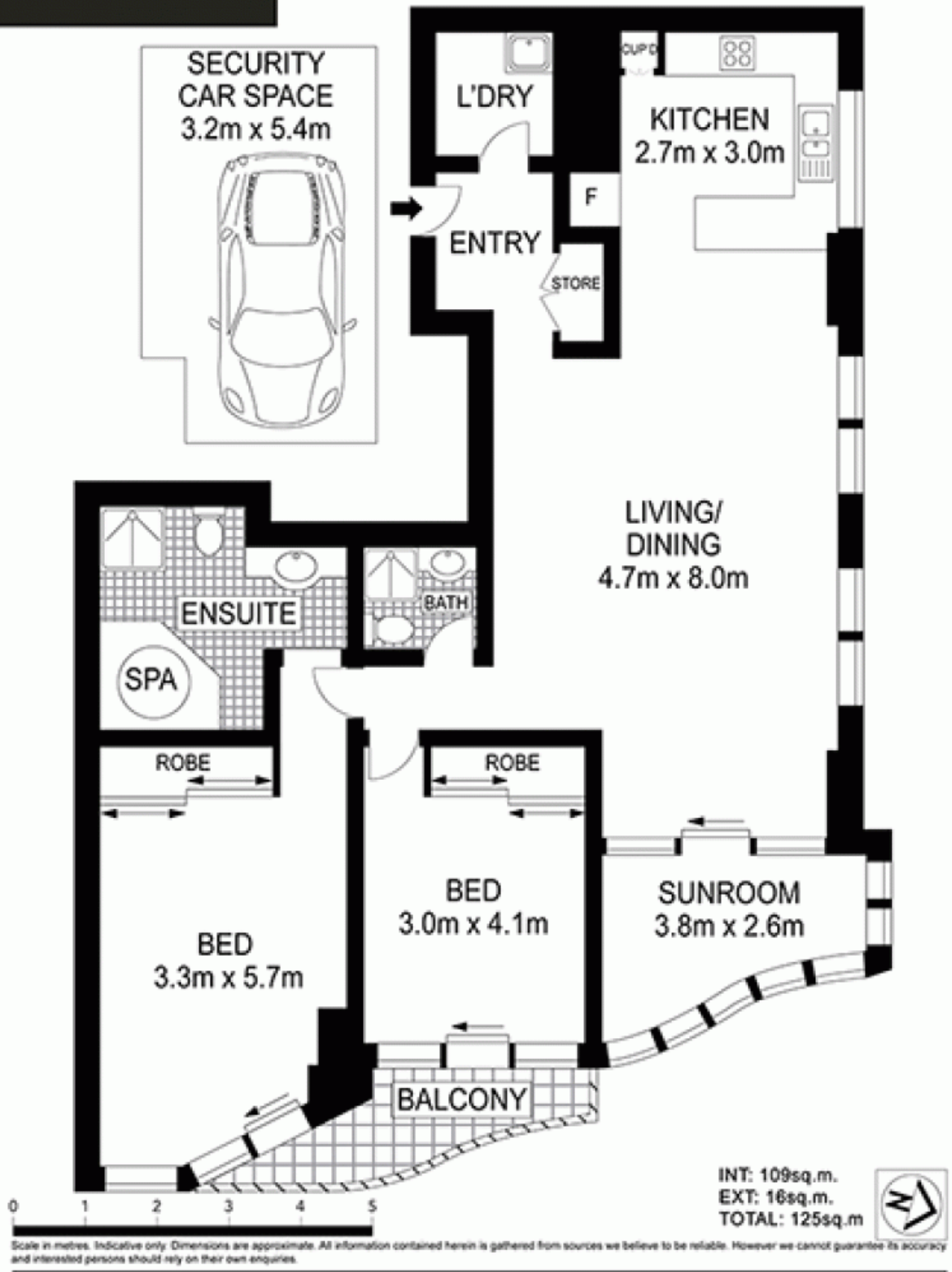
Situated in a popular mid town location opposite Cockle Bay, with easy stroll to QVB, Centre Point and Town Hall, this well presented over sized 2 bedroom apartment features a desirable floor plan aglow with refreshing morning sunlight and enjoys the privacy of the corner position with minimal common wall and only 4 lots on each floor.

**Building Size** : 109 sqm  
**Land Size** : 125 sqm  
**View** : <https://www.srmetro.com.au/sale/nsw/sydney-city/sydney/residential/apartment/5716850>

Acclaimed boutique residential tower with majority residents owner occupiers  
 Practical rectangular-shaped open plan with NE aspect  
 2 generous double bedrooms with direct access to balcony  
 Glass enclosed sunroom to maximise natural light and to entertain  
 Fully integrated stainless steel gas kitchen with granite bench top  
 Comprehensive facilities including pool, spa, sauna, gym



**Paul Ding**  
 02 9283 2832



38/222 Sussex Street, Sydney