



**Level 16/199 Castlereagh Street Sydney NSW**

1 1 1

Position on the north east corner of the sought after Victoria Tower complex, and embracing the spectacular views over Hyde Park to the harbour, is this well maintained one bedroom apartment of immense comfort and charm. An astute investment or first home opportunity, it's just moments to the financial centre, cultural attractions, great dining and entertainment.

**View** : <https://www.srmetro.com.au/sale/nsw/sydney-city/sydney/residential/apartment/5716818>

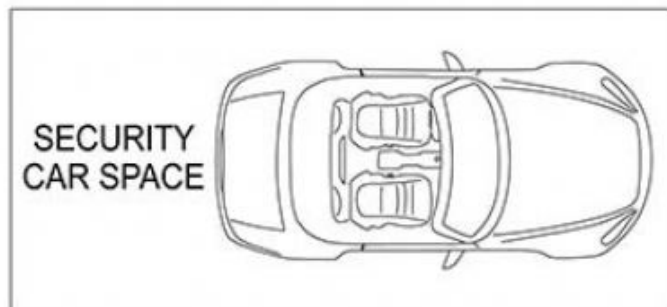
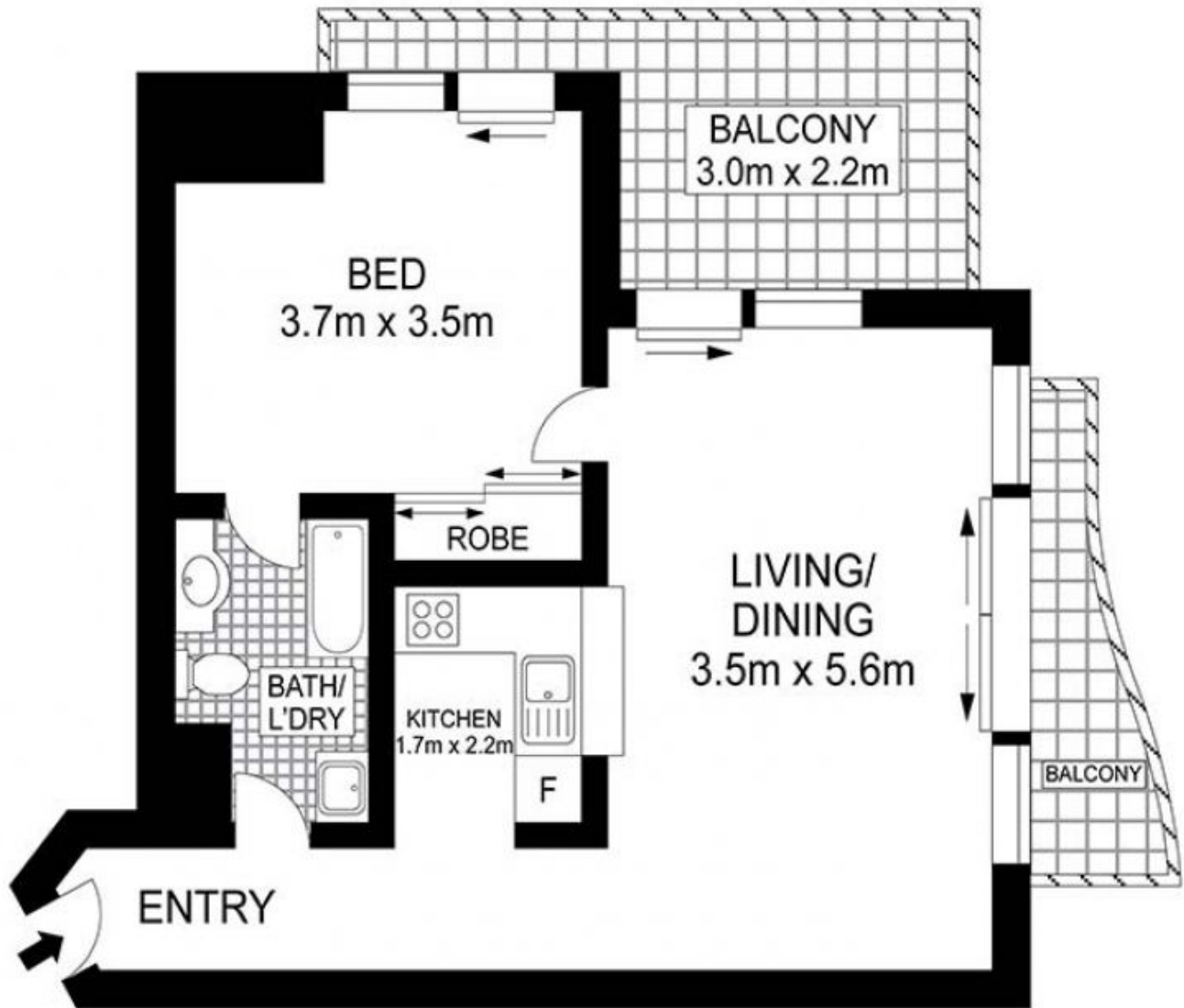
- Magnificent Hyde Park and harbour views
- Desirable corner position bathed in natural light
- Renovated kitchen
- Two way bathroom integrated with laundry space
- Valuable car space on title
- Onsite concierge and 24/7 security
- Moments from bars, dining and entertainment



**Paul Ding**  
**02 9283 2832**

Strata: \$1,548 qtr approx.

<https://www.srmetro.com.au>



APPROX. INTERNAL AREA: 59sq.m.  
APPROX. EXTERNAL AREA: 14sq.m.  
APPROX. TOTAL AREA: 73 sq.m.



Scale in metres. Indicative only. Dimensions are approximate. All information contained herein is gathered from sources we believe to be reliable. However we cannot guarantee its accuracy and interested persons should rely on their own enquiries.

1603/199 Castlereagh Street, Sydney