



810/199 Castlereagh Street Sydney NSW

1 1

Immersed in the acclaimed outstanding well-maintained complex with low strata levies, this excellent north facing studio apartment presents a wonderfully convenient and affordable city address. An astute investment opportunity, it's just moments to the financial centre, cultural attractions, great dining and entertainment.

View : <https://www.srmetro.com.au/sale/nsw/sydney-city/sydney/residential/apartment/5716809>

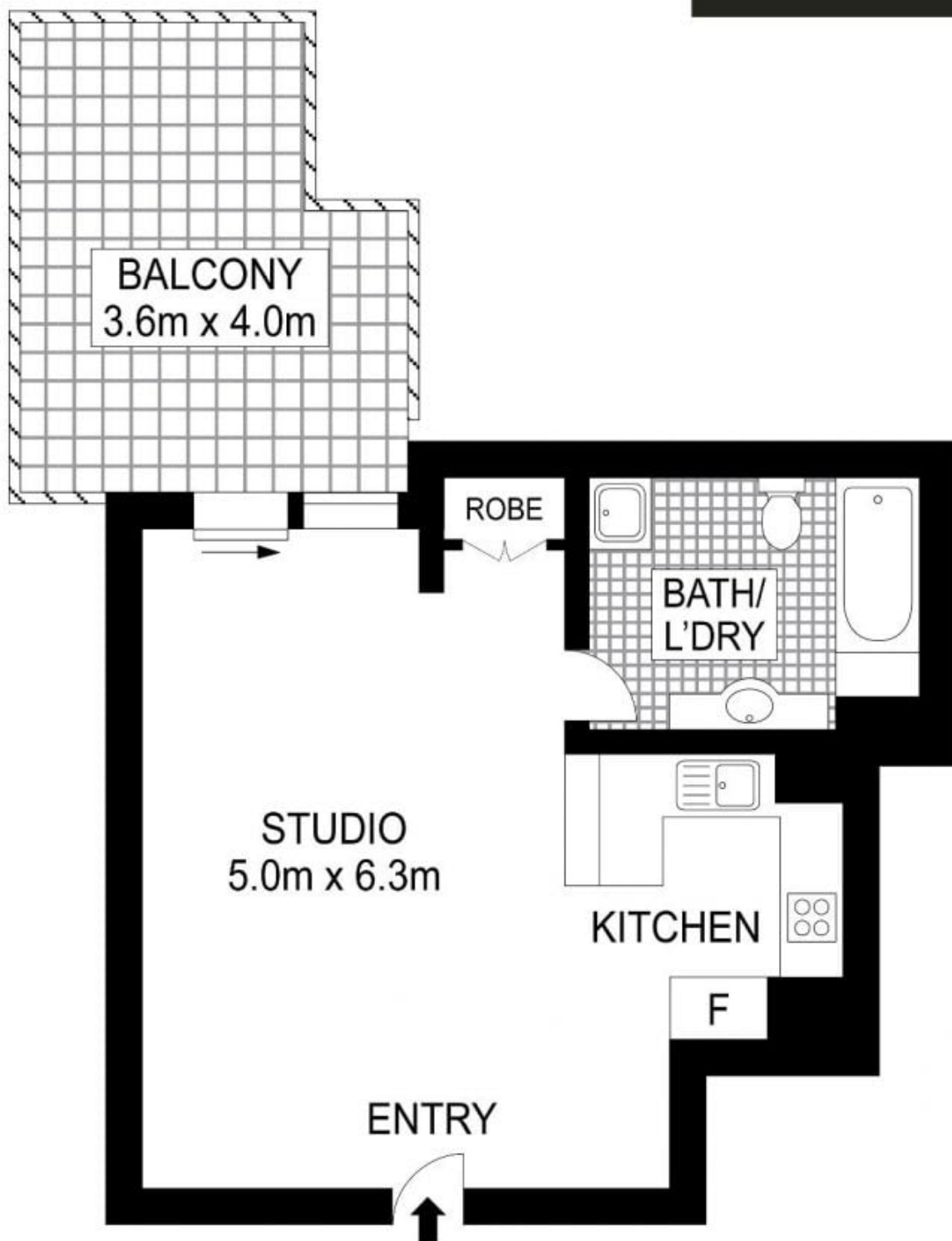
Large 51sqm with terrace
North aspect with ambient light
Spacious rectangular living with dining area
Well-kept gas kitchen
Large bathroom with integrated laundry space
On site concierge & 24 hour security
Ducted air conditioning
Strong consistent rental returns



Paul Ding
02 9283 2832

Strata: \$637 qtr approx

<https://www.srmetro.com.au>



APPROX. TOTAL: 51sq.m.



Scale in metres. Indicative only. Dimensions are approximate. All information contained herein is gathered from sources we believe to be reliable. However we cannot guarantee its accuracy and interested persons should rely on their own enquiries.

810/199 Castlereagh Street, Sydney