



113/438 Anzac Parade Kingsford NSW

2 1 1

This delightful split level 95sqm 2 bedroom apartment is conveniently located in the heart of Kingsford with bus at door, future light rail stop and within walking distance to UNSW.

- 2 bedroom 1 bathroom plus powder room
- Gourmet kitchen with stainless steel gas appliances
- Spacious living & dining flow to entertaining terrace
- Floor to ceiling glass windows maximize natural sunlight
- Modern bathroom with floor to ceiling tiles
- Security carspace & storage

Strata manager: Net Strata Management 8567 6400 Lot 80/SP84703

Strata Levies: \$1,487.45 pq

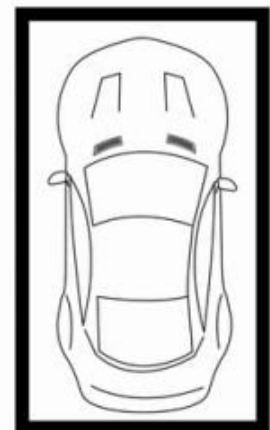
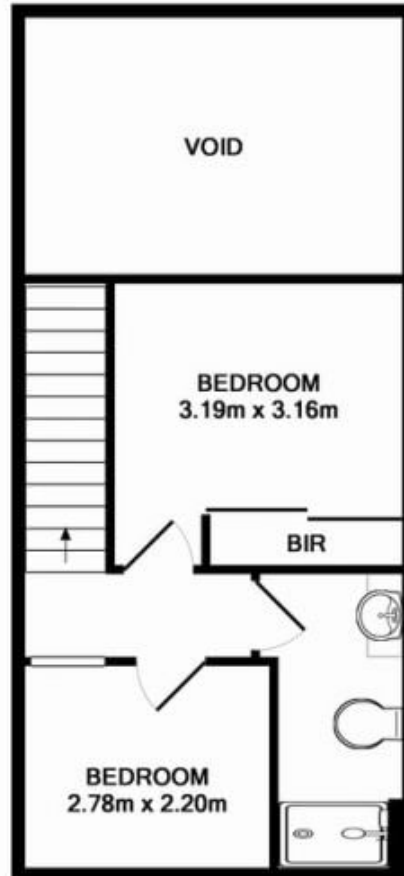
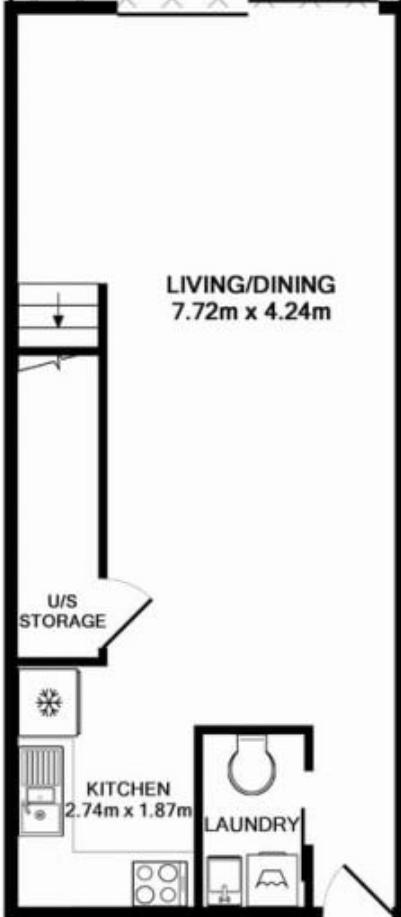
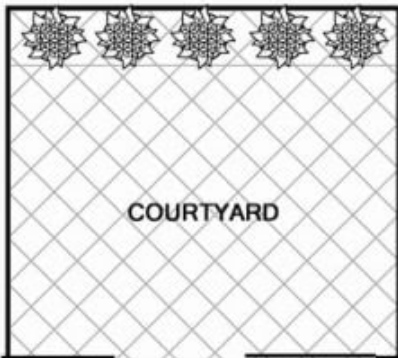
Building Size : 95 sqm
View : <https://www.srmetro.com.au/sale/nsw/ea-stern-suburbs/kingsford/residential/apartment/5716808>



Bernard Tsang
02 9283 2832



Wilson Diec
02 9283 2832



APARTMENT
APPROX. FLOOR
AREA 95.0 SQ.M.

SECURE CAR SPACE
APPROX. FLOOR
AREA 14.0 SQ.M.



TOTAL APPROX. FLOOR AREA 114.0 SQ.M.
Measurements are approximate. Not to Scale. For illustrative purposes only.
Produced by Open2View.com.au