



17/27 Park Street Sydney NSW

2 1 1

Live a convenient and vibrant inner city lifestyle in this charming and affordable two bedroom apartment positioned on the 17th floor of the popular 'Park Regis' building. This light filled property commands spectacular views across Sydney Hyde Park and only steps to Town Hall, QVB, Myer and Westfield.

- Magnificent Hyde Park view from living area
- Updated kitchen with windows and bathroom with laundry facilities
- Timber flooring throughout
- Dual aspect which is ideal for cross-flow ventilation
- Rare security carspace on separate title
- Residents have access to Park Regis concierge, rooftop sundeck and pool with 360-degree views of Sydney CBD

Strata levies: \$1,495.41pq

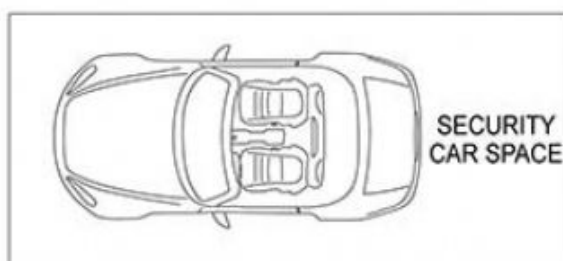
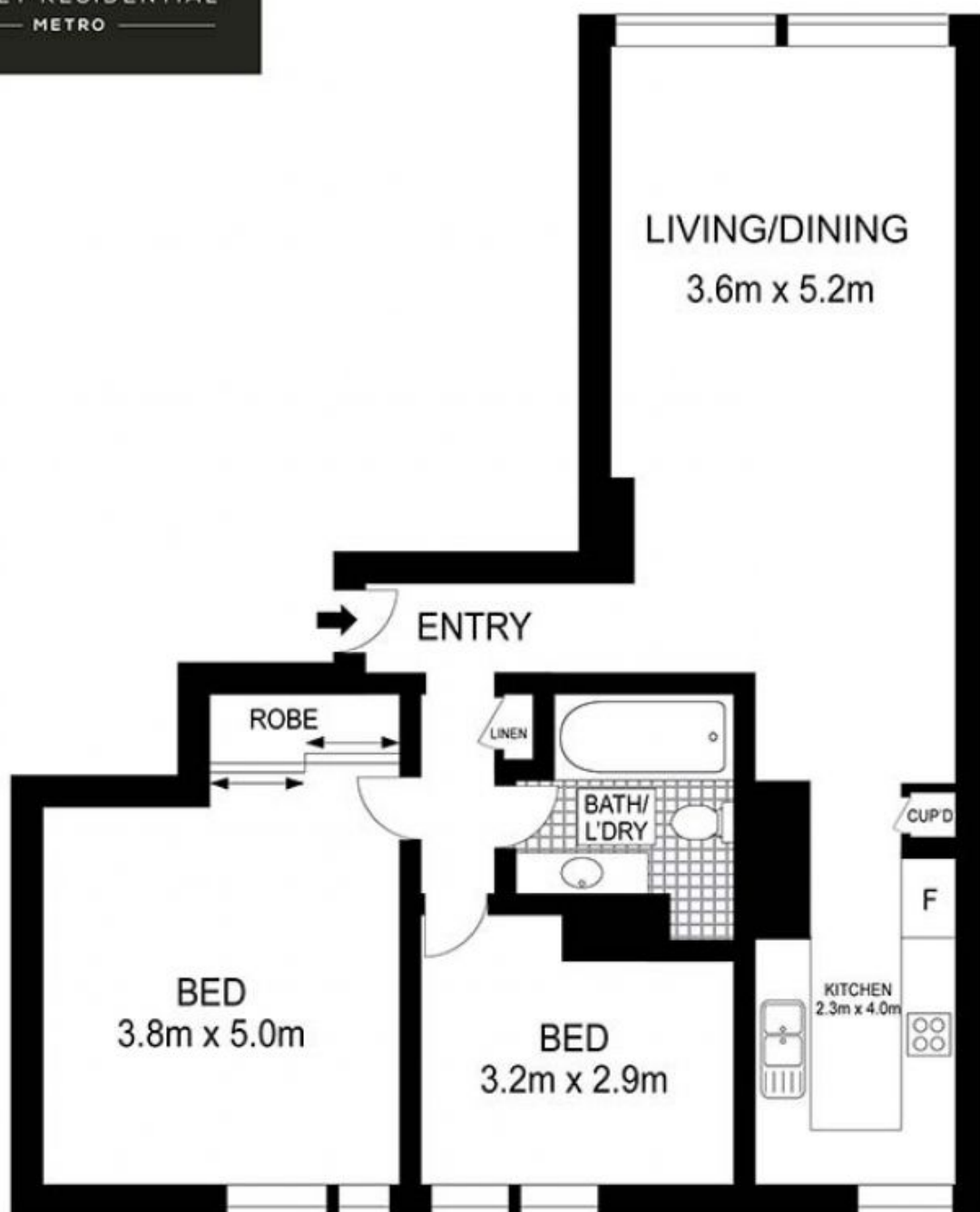
View : <https://www.srmetro.com.au/sale/nsw/sydney-city/sydney/residential/apartment/5716801>



Bernard Tsang
02 9283 2832



Wilson Diec
02 9283 2832



Scale in metres. Indicative only. Dimensions are approximate. All information contained herein is gathered from sources we believe to be reliable. However we cannot guarantee its accuracy and interested persons should rely on their own enquiries.

