



5801/91 Liverpool Street Sydney NSW

2 2 1

Designer Inner City Style with Sweeping Panoramas

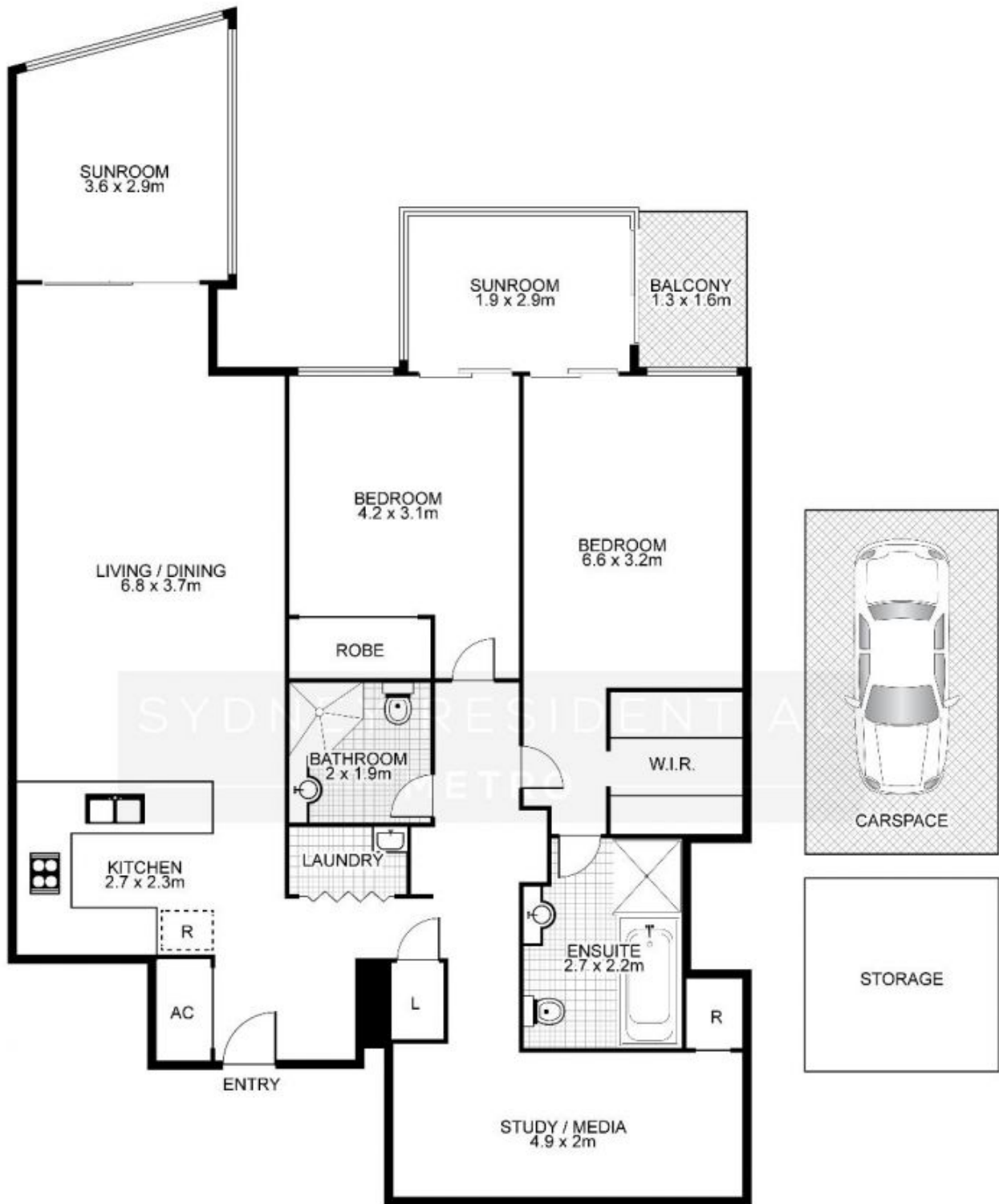
Style, light & panoramic views combine in this designer World Tower apartment to create a quality home of excellent lifestyle convenience. Set up high on the 58th floor, it commands a stunning vista that stretches over Hyde Park, Sydney Harbour & the glittering city skyline. The property also enjoys an exceptional CBD position within a stroll to all the attractions that make this city so popular with restaurants, Hyde Park, Chinatown and train stations all close by.

View : <https://www.srmetro.com.au/sale/nsw/sydney-city/sydney/residential/apartment/5716731>



Wilson Diec
02 9283 2832

- * Oversized interior layout with a generous open living space
- * Two double bedrooms plus a separate study/media room
- * Master bedroom features a walk-in robe and ensuite
- * Two large sunrooms that frame the sensational city views



5801/91 Liverpool Street, SYDNEY



This floor plan is intended as a guide only. Layout dimensions are approximate only. No representations or warranties of any nature whatsoever are given or intended. Any person using this information should rely on their own enquiries. Floor Plans by SURROUNDPIX.