



7/308 Pitt Street Sydney NSW

2 🏠 2 🚿

Popular mid town location with easy access to Town Hall, this 113sqm 2 bedroom apartment features a very livable floor plan. It occupies the north- west corner position with minimal common wall and only 4 lots on each floor.

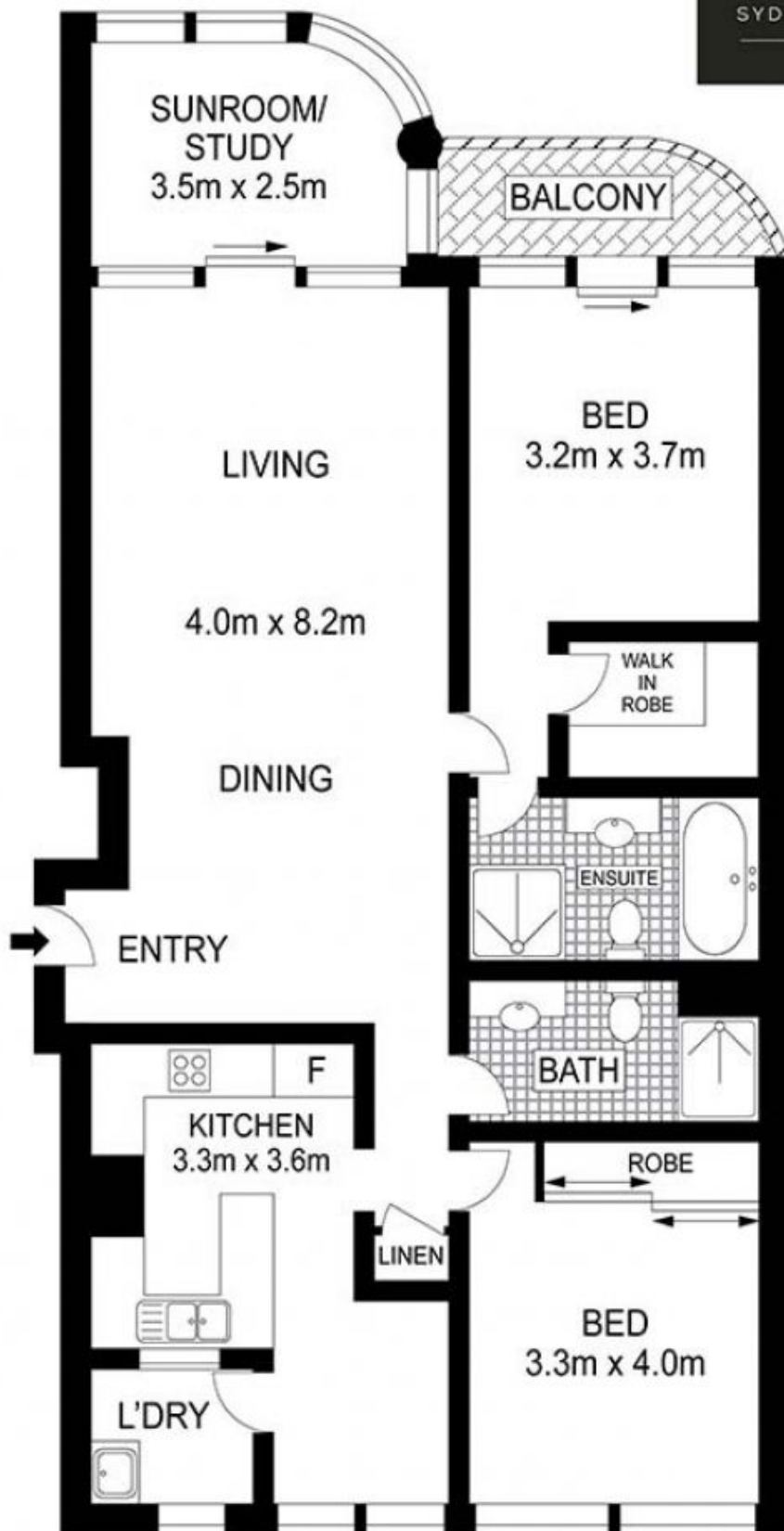
Building Size : 113 sqm
View : <https://www.srmetro.com.au/sale/nsw/sydney-city/sydney/residential/apartment/5716725>

Acclaimed residential tower, majority of resident owner occupiers,
 Spacious rectangular lounge leading to a large sunroom and open balcony,
 2 double sized bedrooms, main with walk-in-robe,
 Separate kitchen with granite bench top and breakfast area,
 Recreational facilities including pool, spa, sauna, gym, squash court and courtyard BBQ,
 Current rent \$825 per week



Paul Ding
02 9283 2832

For more details of the features and management of the



INT: 113 m²



Scale in metres. Indicative only. Dimensions are approximate. All information contained herein is gathered from sources we believe to be reliable. However we cannot guarantee its accuracy and interested persons should rely on their own enquiries.

7/308 Pitt Street, Sydney