



3201/197 Castlereagh Street Sydney NSW

1 1 1

Perched high on the north east corner of the well established residential complex, and embracing the spectacular views of the botanic garden & harbour, is this well maintained one bedroom apartment. An astute investment or first home opportunity, it's just moments to the financial centre, cultural attractions, great dining and entertainment.

View : <https://www.srmetro.com.au/sale/nsw/sydney-city/sydney/residential/apartment/5716708>

- Magnificent Hyde Park and harbour views
- Desirable corner position bathed in natural light
- Practical floor plan with L-shape lounge
- Renovated bathroom integrated with laundry space
- Ducted air conditioning, security parking
- 7/24 Security and concierge

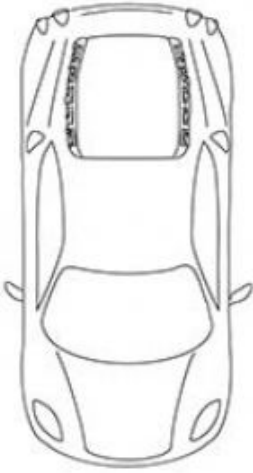


Paul Ding
02 9283 2832

Strata: \$1,846.35 qtr approx.
Council: \$249.80 qtr approx

<https://www.srmetro.com.au>

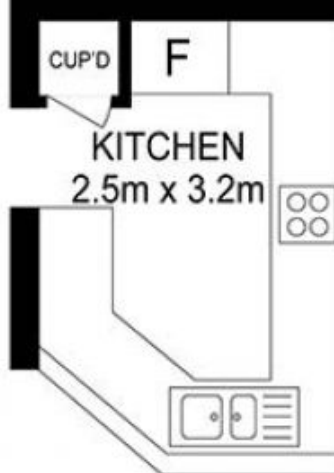
SECURITY
CAR SPACE
2.5m x 5.6m



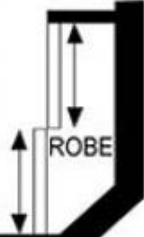
BATH/
L'DRY



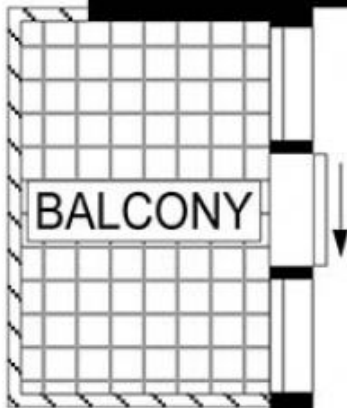
CUP'D F
KITCHEN
2.5m x 3.2m



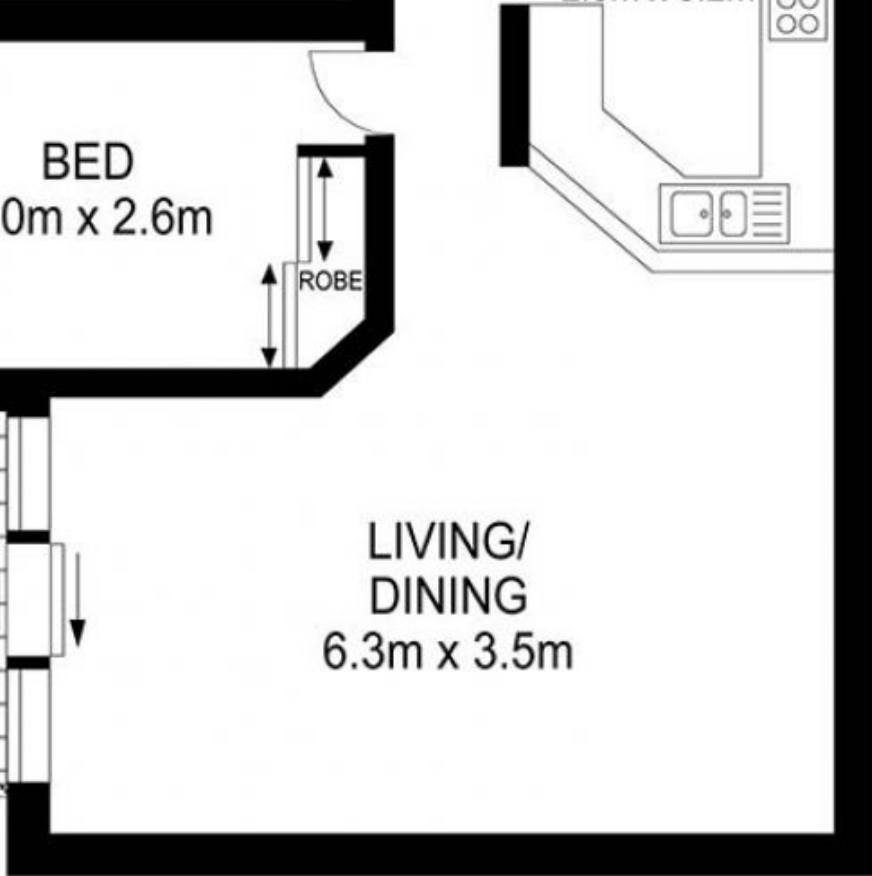
BED
4.0m x 2.6m



BALCONY



LIVING/
DINING
6.3m x 3.5m



INT: 63 m²
EXT: 14 m²
TOTAL: 77 m²



Scale in metres. Indicative only. Dimensions are approximate. All information contained herein is gathered from sources we believe to be reliable. However we cannot guarantee its accuracy and interested persons should rely on their own enquiries.

3201/197 Castlereagh Street, Sydney