



2404/197 Castlereagh Street Sydney NSW

2 1 1

Occupying a desirable corner position in the sought after Victoria Tower apartments, is this well presented 2 bedroom home perfectly located near Hyde Park with level walk to most parts of CBD. An astute investment opportunity, it's just moments to the financial centre, cultural attractions, great dining and entertainment.

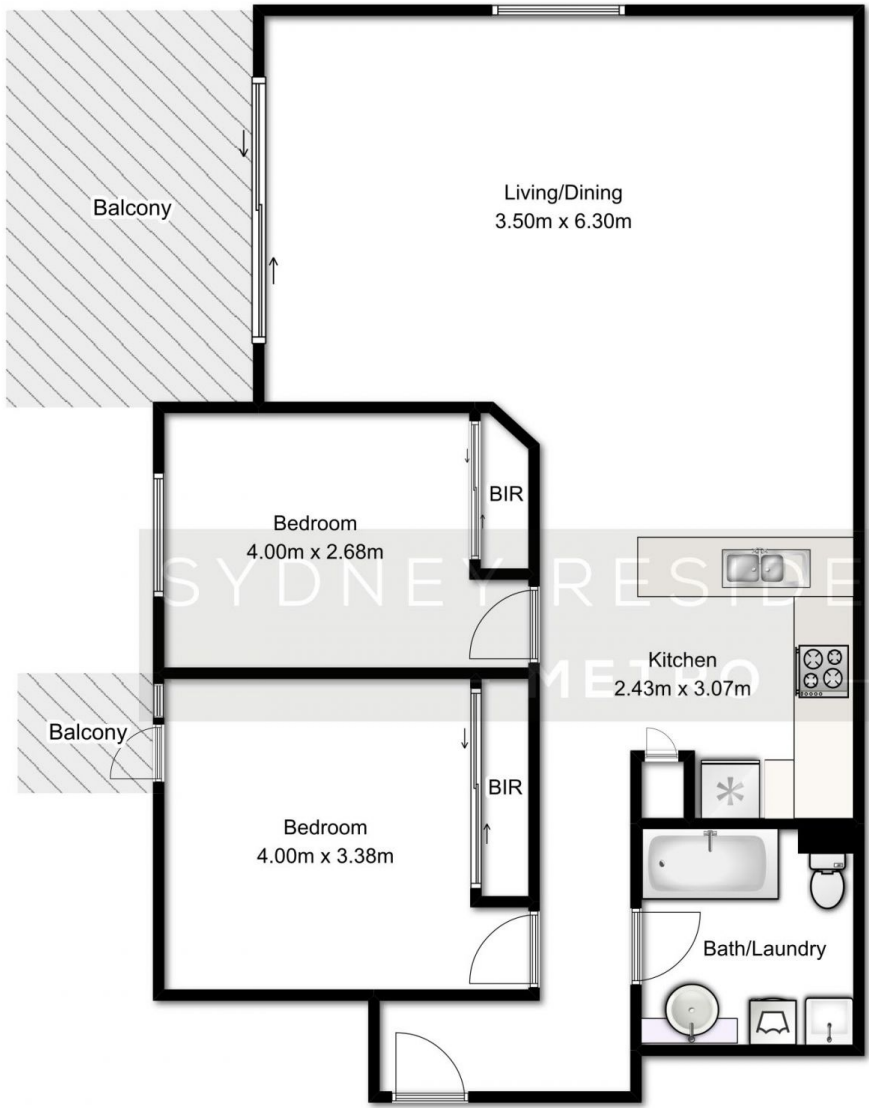
Land Size : 84 sqm
View : <https://www.srmetro.com.au/sale/nsw/sydney-city/sydney/residential/apartment/5716616>

- Desirable corner position
- Decent 2 bedroom with built-ins
- East facing balcony with Park view
- Spacious L- shape lounge
- Renovated bathroom with integrated laundry space
- Ducted air conditioning
- 7/24 Security and concierge



Paul Ding
02 9283 2832

Council Rates: \$249 qtr approx
 Water Rates: \$175 qtr approx



APARTMENT
APPROX. FLOOR
AREA 84.0 SQ.M.

SECURE CAR SPACE
APPROX. FLOOR
AREA 14.0 SQ.M.

TOTAL APPROX. FLOOR AREA 98.0 SQ.M.
Measurements are approximate. Not to Scale. For Illustrative purposes only.