

### 19/343 Pitt Street Sydney NSW

1 1

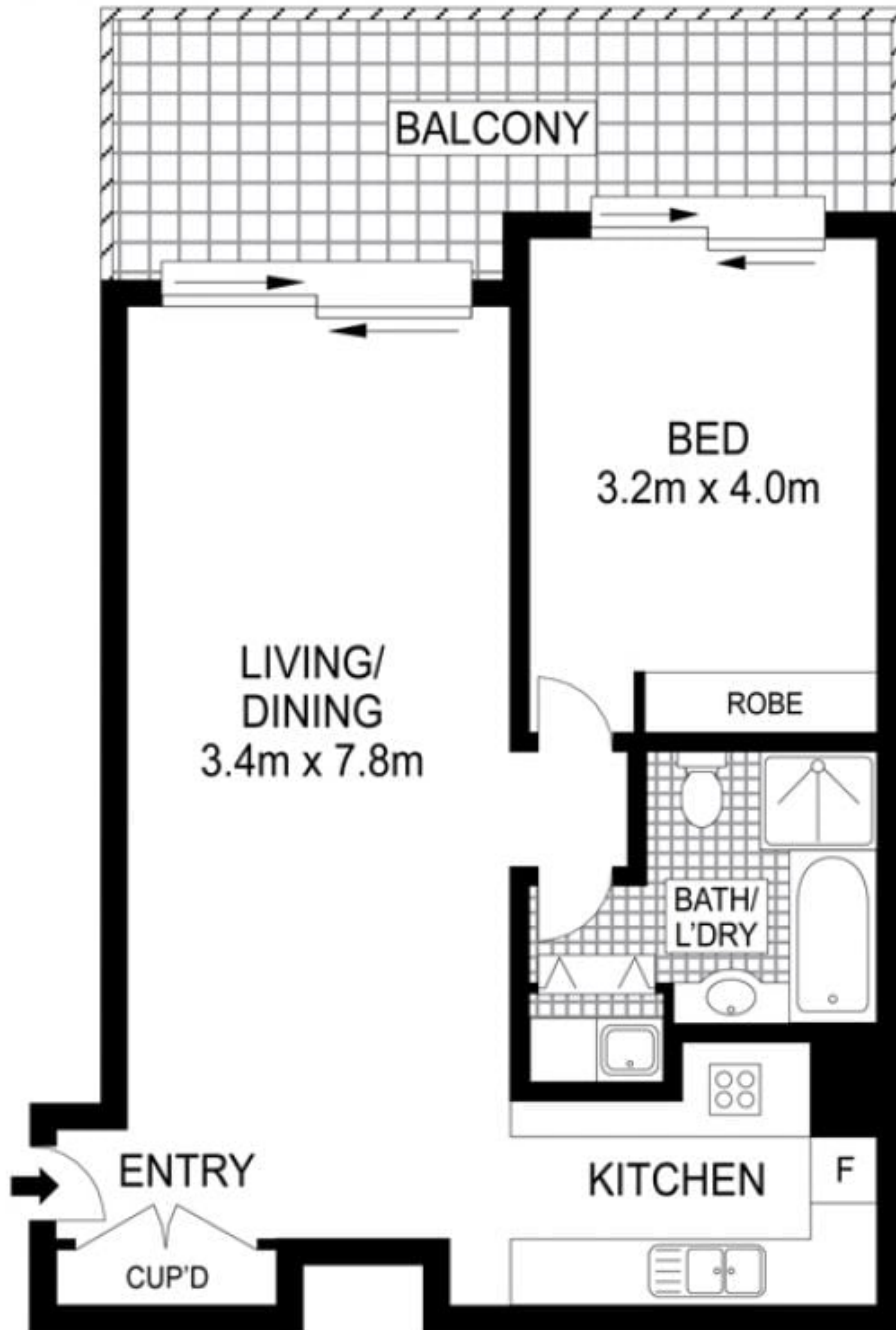
Positioned in the very heart of the city's famed entertainment district, ' Century Tower ' is one of the most sought after residential buildings surrounded by an array of cafes, restaurants, theatre, shopping centres & all the great amenities city has to offer.

- Well presented 68sqm one bedroom apartment positioned on level 19
- Generous & ambient open plan living & dining area extend to full width balcony
- Full brick construction; 2.7m ceiling
- Fully tiled bathroom with frameless shower
- Deluxe kitchen with granite top & stainless steel appliances
- Ducted air, internal laundry
- Full facilities which include heated pool, gymnasium & more

**Building Size** : 68 sqm  
**View** : <https://www.srmetro.com.au/sale/nsw/sydney-city/sydney/residential/apartment/5716612>



**Bernard Tsang**  
02 9283 2832



0 1 2 3 4 5

Scale in metres. Indicative only. Dimensions are approximate. All information contained herein is gathered from sources we believe to be reliable. However we cannot guarantee its accuracy and interested persons should rely on their own enquiries.

APARTMENT: 68sqm



1906/343 Pitt Street, Sydney