



**37/222 Sussex Street Sydney NSW**

**2** **2** **1**

**147SQM OF RARE FOUND CITY HOME**

Superbly situated in a popular mid town location opposite Cockle Bay, with easy stroll to QVB, Town Hall and newly developed Barangaroo, this meticulously presented house size 2 bedroom plus sunroom apartment features a desirable floor plan aglow with refreshing sunlight and enjoys the privacy of the corner position with minimal common wall and only 4 lots on each floor. There is also direct water view over Darling Harbour. This rare property is a must to inspect for any decent home buyers:-

Acclaimed boutique residential tower with majority residents owner occupiers

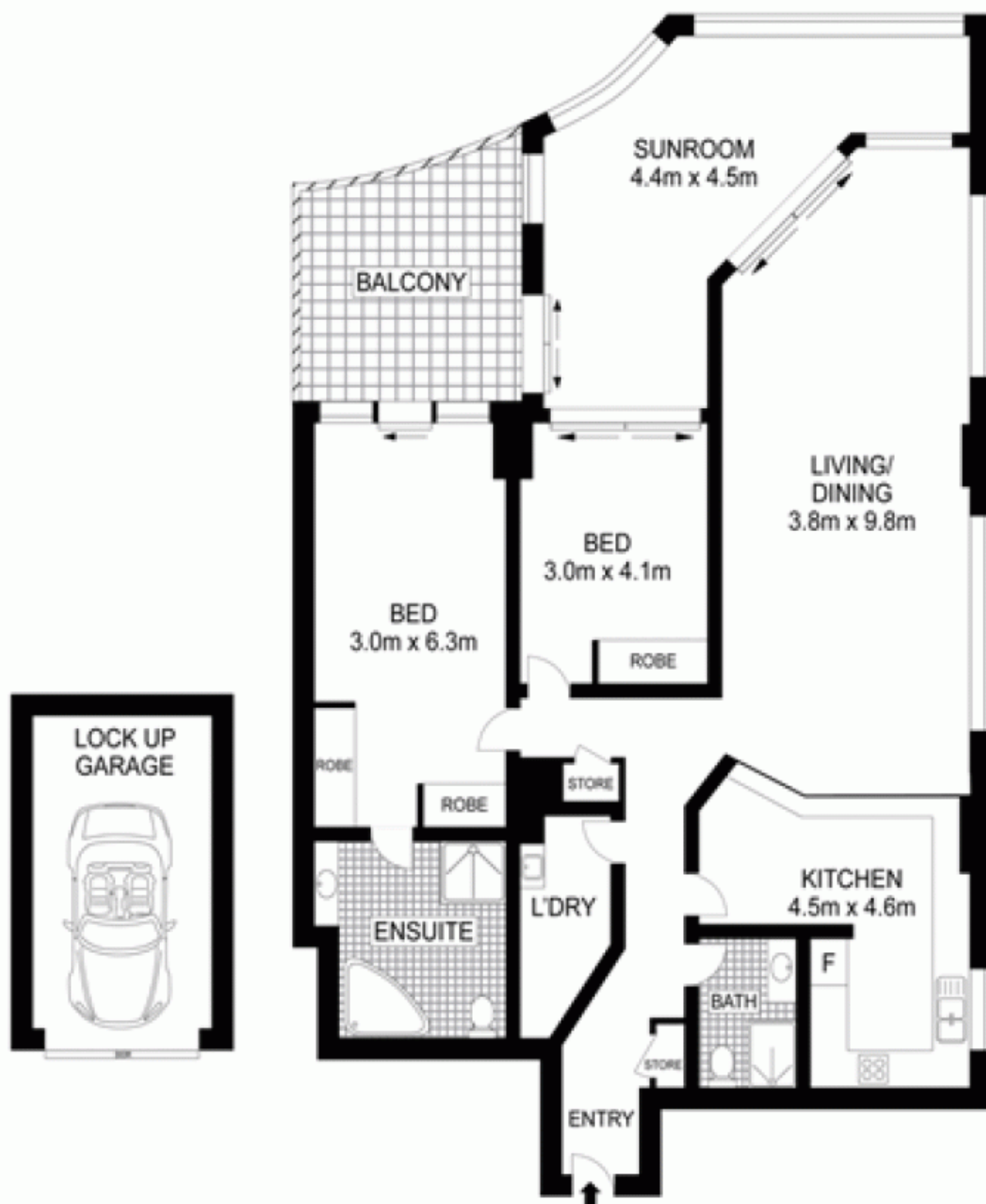
Practical rectangular-shaped open plan with north aspect  
2 generous double bedrooms both with direct access to balcony

**Price** : \$ 1,530,000  
**Building Size** : 147 sqm  
**Land Size** : 162 sqm  
**View** : <https://www.srmetro.com.au/sale/nsw/sydney-city/sydney/residential/apartment/5716603>



**Paul Ding**  
**02 9283 2832**

<https://www.srmetro.com.au>



0 1 2 3 4 5

Scale in metres. Indicative only. Dimensions are approximate. All information contained herein is gathered from sources we believe to be reliable. However we cannot guarantee its accuracy and interested persons should rely on their own enquiries.

APARTMENT: 147 m<sup>2</sup>  
TOTAL APPROX. : 162 m<sup>2</sup>



37-222 Sussex Street, Sydney