



S707/178 Thomas Street Sydney NSW

2 2 1

The Quay represents a true outstanding opportunity to enjoy the relaxed but sophisticated city living. Situated in the heart of vibrant and bustling CBD, this immaculate apartment is within easy walking distance to public transportation, universities, retail outlets, cafes and restaurants.

- Ultra contemporary living with light-filled interiors
- Combined lounge & dining lead to North facing balcony
- Generous master bedroom with ensuite and built-in robes
- White marble stone flooring throughout living area
- Exquisite island kitchen with mirrored splashback & Miele appliances
- Ducted air-conditioning; security intercom
- NBN fast internet & Foxtel ready
- Podium level with garden landscape, BBQ area and a well equipped gymnasium

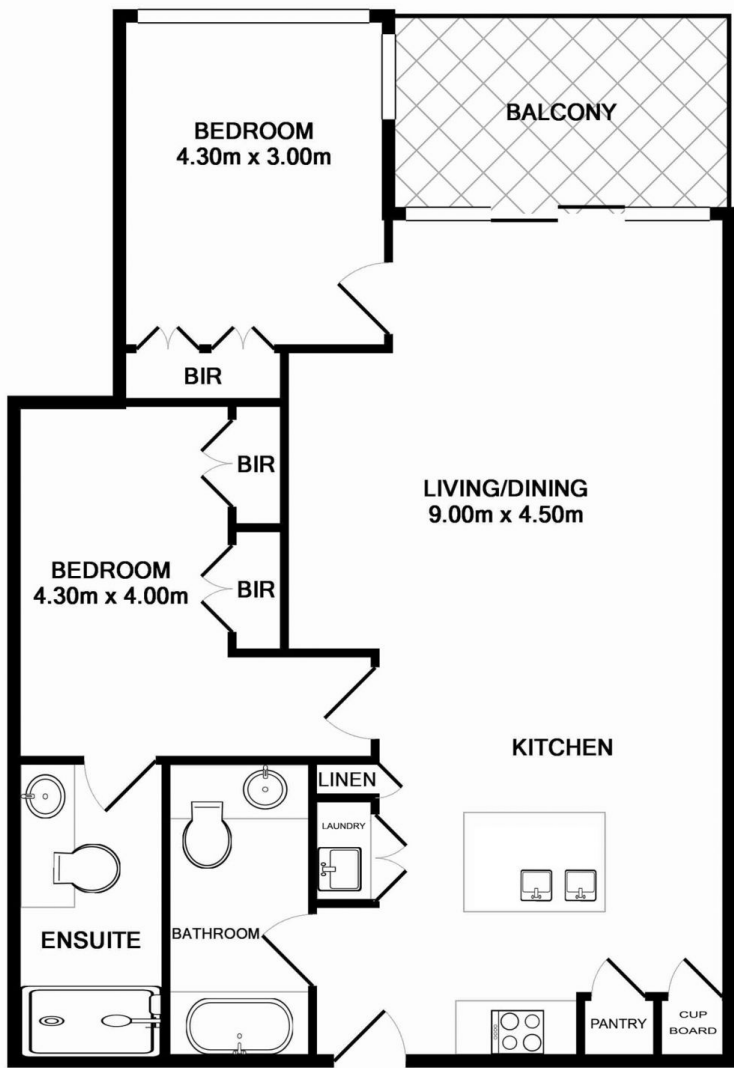
Building Size : 90 sqm
View : <https://www.srmetro.com.au/sale/nsw/sydney-city/sydney/residential/apartment/5716601>



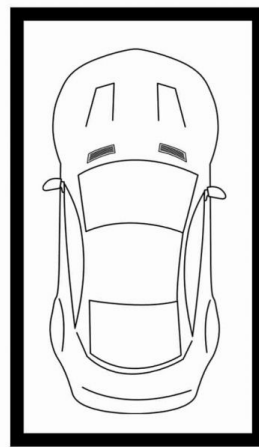
Bernard Tsang
 02 9283 2832



Wilson Diec
 02 9283 2832



APARTMENT
APPROX. FLOOR
AREA 90.0 SQ.M.



SECURE CAR SPACE
APPROX. FLOOR
AREA 13.0 SQ.M.



STORAGE
LOCKER

TOTAL APPROX. FLOOR AREA 103.0 SQ.M.
Measurements are approximate. Not to Scale. For Illustrative purposes only.

