



**802/197 Castlereagh Street Sydney NSW**

1 🏠 1 🚗

Victoria Tower, the sought after well-maintained complex, located near Centre Point adjacent to Hyde Park and Town Hall with easy level walk to every part of CBD.

Boasting the perfect north east aspect in refreshing morning sunlight; large functional kitchen with stainless steel gas cook top, built -in dishwasher and loads of cover space; internal laundry integrated with bathroom, reverse cycle air-conditioning.

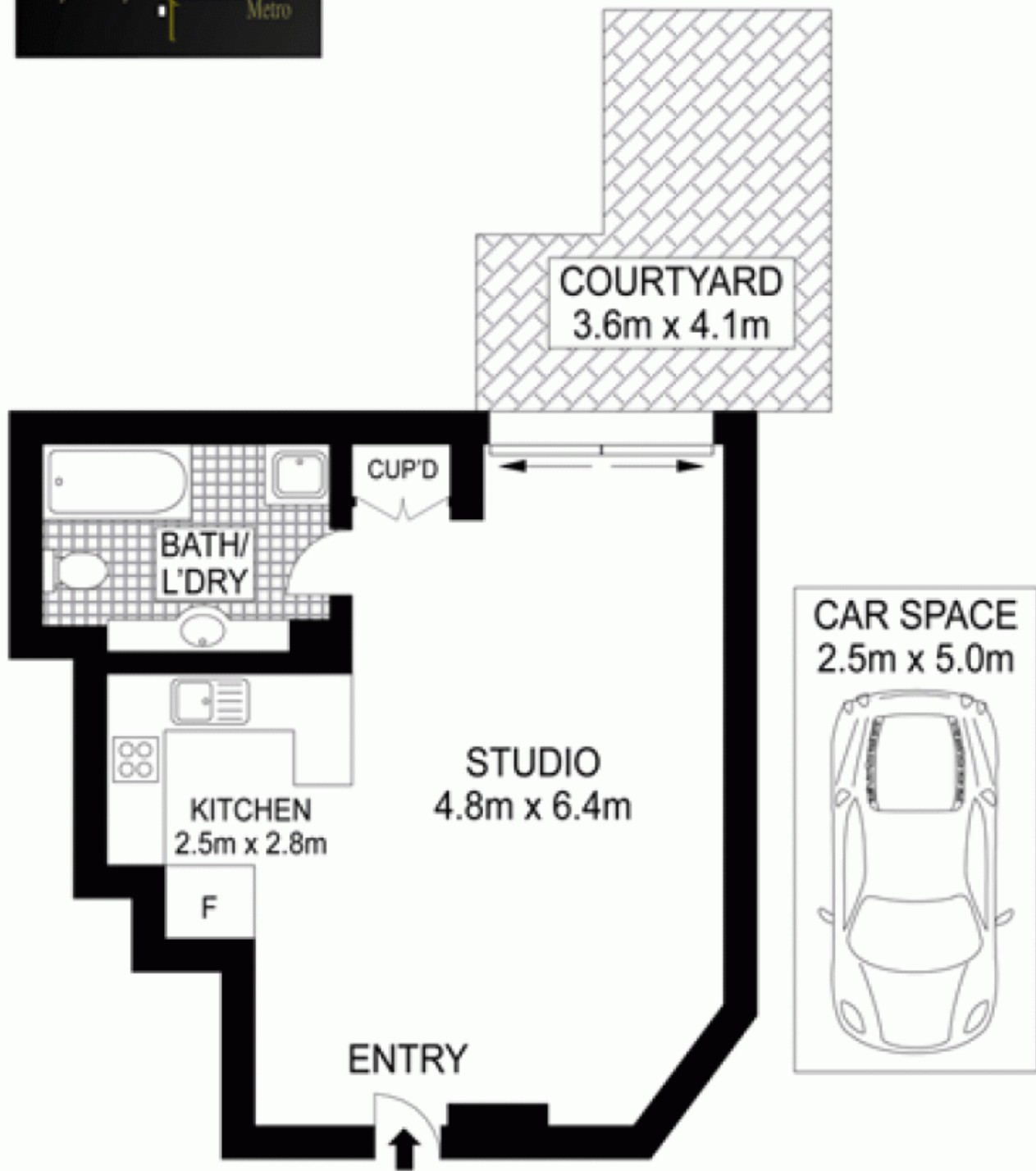
Keep the car space and let the apartment, approx rent \$470pw.

Strata Levies: \$954 qtr approx

**Building Size** : 50 sqm  
**View** : <https://www.srmetro.com.au/sale/nsw/sydney-city/sydney/residential/apartment/5716596>



**Paul Ding**  
02 9283 2832



Scale in metres. Indicative only. Dimensions are approximate. All information contained herein is gathered from sources we believe to be reliable. However we cannot guarantee its accuracy and interested persons should rely on their own enquiries.

APARTMENT: 50 m<sup>2</sup>  
TOTAL APPROX. : 64 m<sup>2</sup>



802/197 Castlereagh Street, Sydney