



### 603/136 Ross Street Forest Lodge NSW

2 🏠 2 🚗 1 🚗

Perched high on the north corner of Lucarno, the first completed stage of Mirvac's landmark development at Harold Park, and taken in the open green space of Glebe's district view, this exceptionally spacious family residence offers a luxurious retreat of extra living space in one of the peninsula's most appealing settings. It combines stylish finishes with an exceptional livable floor plan.

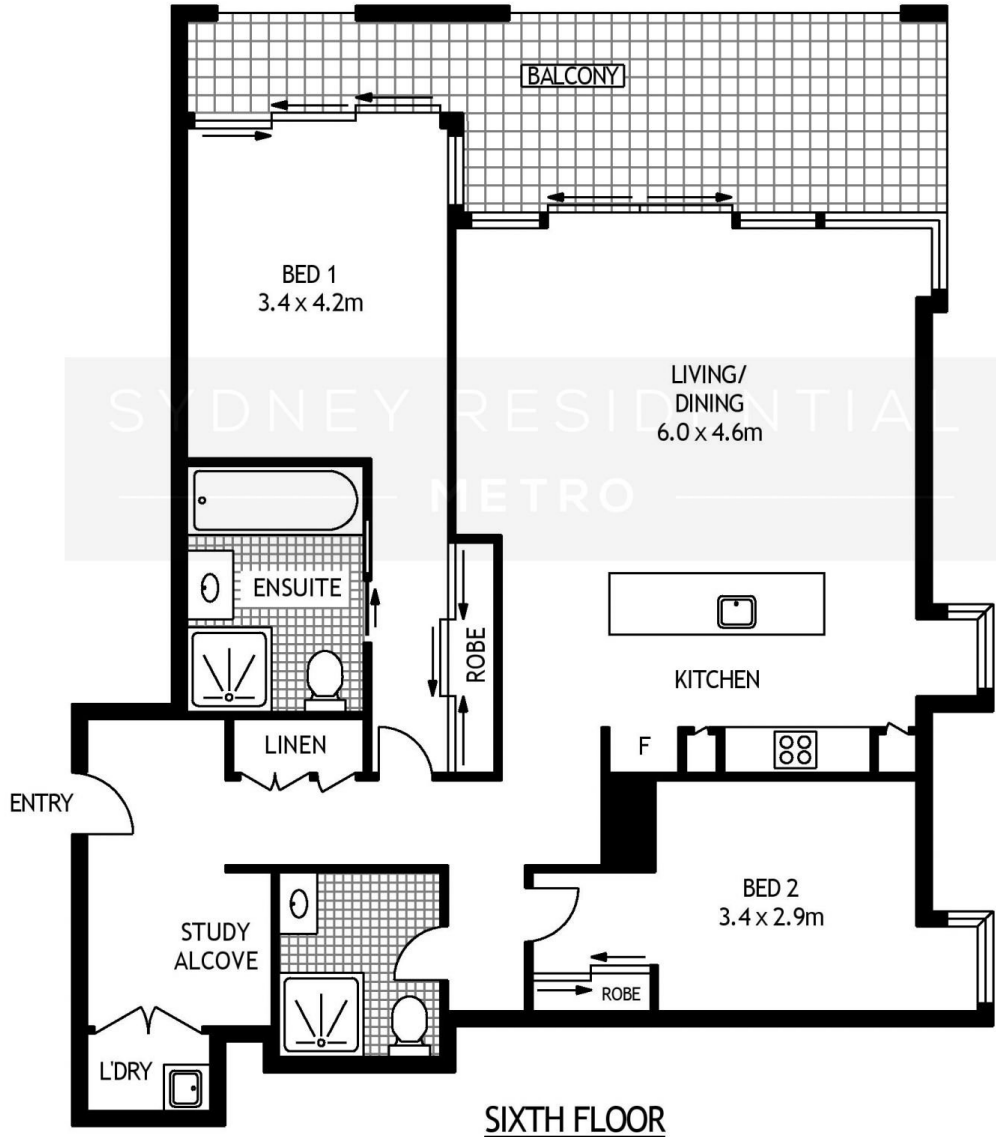
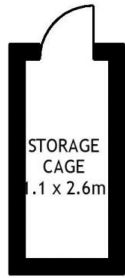
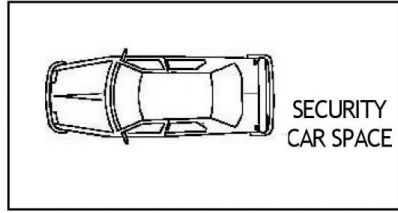
**Building Size** : 123 sqm  
**Land Size** : 140 sqm  
**View** : <https://www.srmetro.com.au/sale/nsw/inner-west/forest-lodge/residential/apartment/5716582>

Magnificent 2 bedroom apartment plus study area  
 Flowing open living, large floor-to-ceiling window  
 Much sought after corner position, minimal common wall  
 Sleek open kitchen with stainless steel fittings  
 Loads of in-room storage and cover space  
 Superb location handy to transport and shopping  
 Security car space and lockup storage



**Paul Ding**  
 02 9283 2832

Strata: \$965 qtr approx



SIXTH FLOOR



603/136 ROSS STREET

FOREST LODGE

SCAPE Floor Planing Disclaimer: This floor plan is conceptual only, it is provided for illustrative purposes only and should not be relied upon. We make no guarantees to the correctness of this plan. All interested parties should make and rely on their own enquiries in determining the accuracy of the information contained in this floor plan.